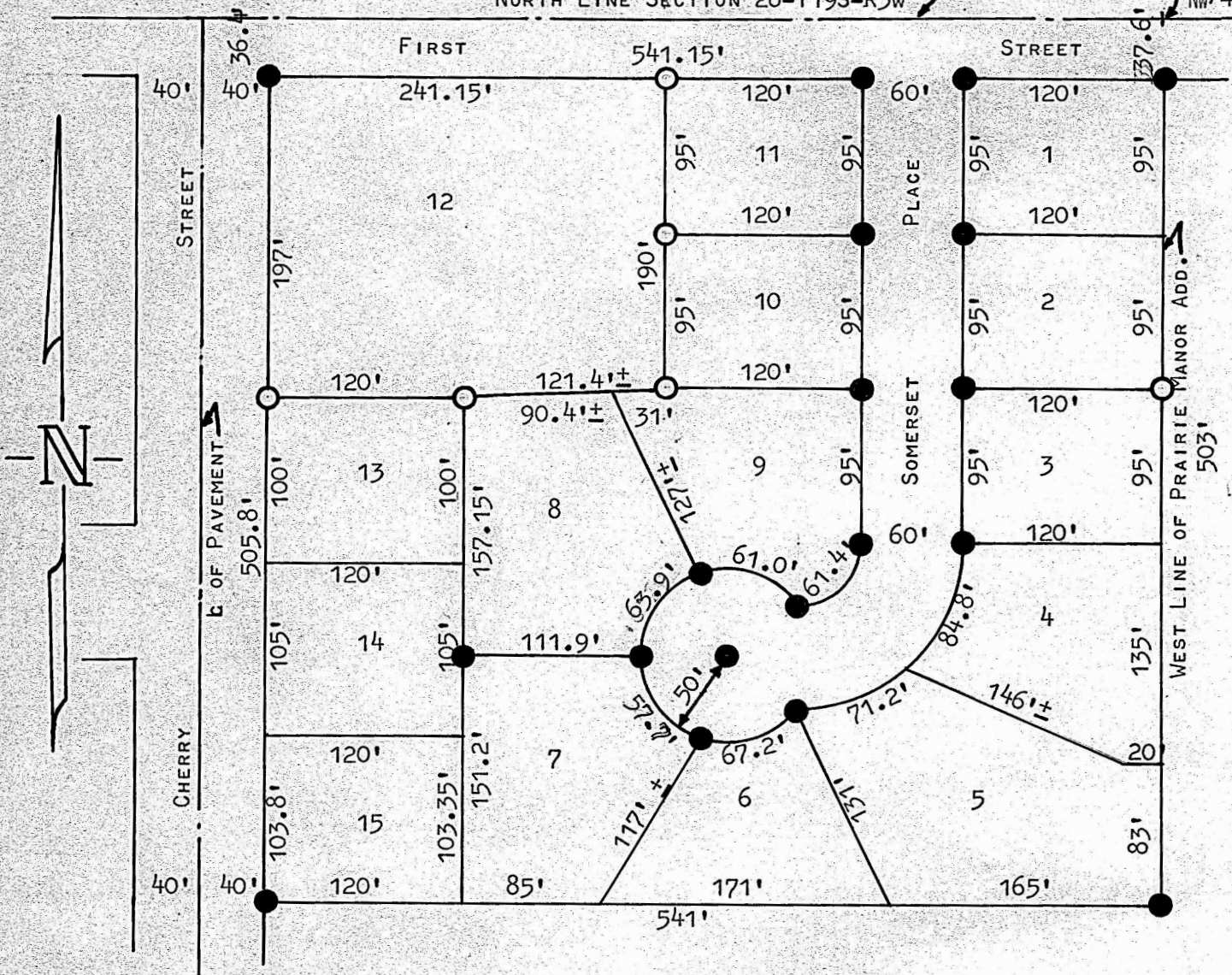


A SURVEY OF LOT 12
GLENWOOD HEIGHTS ADDITION
MCPHERSON, KANSAS

NORTH LINE SECTION 28-T19S-R3W

536' WEST OF
N.E. COR.
NW 1/4 SEC. 28,
T19S-R3W



- PINS FOUND THIS SURVEY
- 1" PINS PLACED THIS SURVEY

STATE OF KANSAS) SS
COUNTY OF MCPHERSON)

I, FRANCIS D. WAGNER, COUNTY ENGINEER OF MCPHERSON COUNTY, KANSAS DO HEREBY CERTIFY THAT I DID CAUSE TO BE DONE ON THE 24TH DAY OF AUGUST, 1959 A SURVEY OF LOT 12 GLENWOOD HEIGHTS ADDITION TO THE CITY OF MCPHERSON, KANSAS AND THAT THE ACCOMPANYING PLAT IS A TRUE EXHIBIT OF SAID SURVEY.

Francis D. Wagner

FRANCIS D. WAGNER
COUNTY ENGINEER
MCPHERSON, KANSAS

25 AUGUST, 1959

MICROFILM