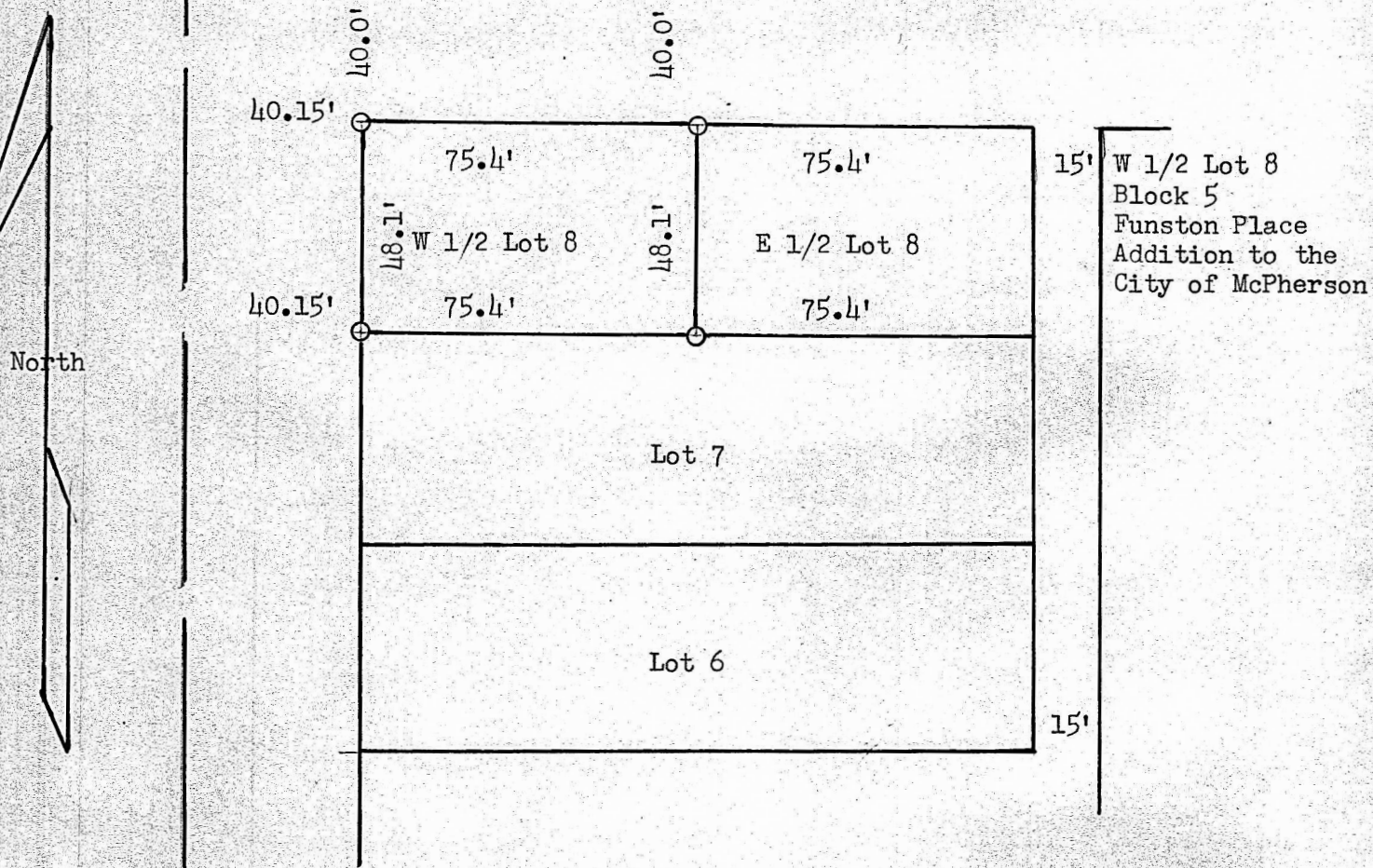


(Copy)

26th. August, 1953

Center Line Hanzock Street Pavement



I, Francis D. Wagner, County Engineer of McPherson County, Kansas, do hereby certify that I did on the 20th day of August, 1953, cause to be done a survey that determined the West 1/2 of Lot 8, Block 5, Funston Place Addition to the City of McPherson and that the accompanying plat is a true exhibit of said survey.

FRANCIS D. WAGNER  
County Engineer  
McPherson County