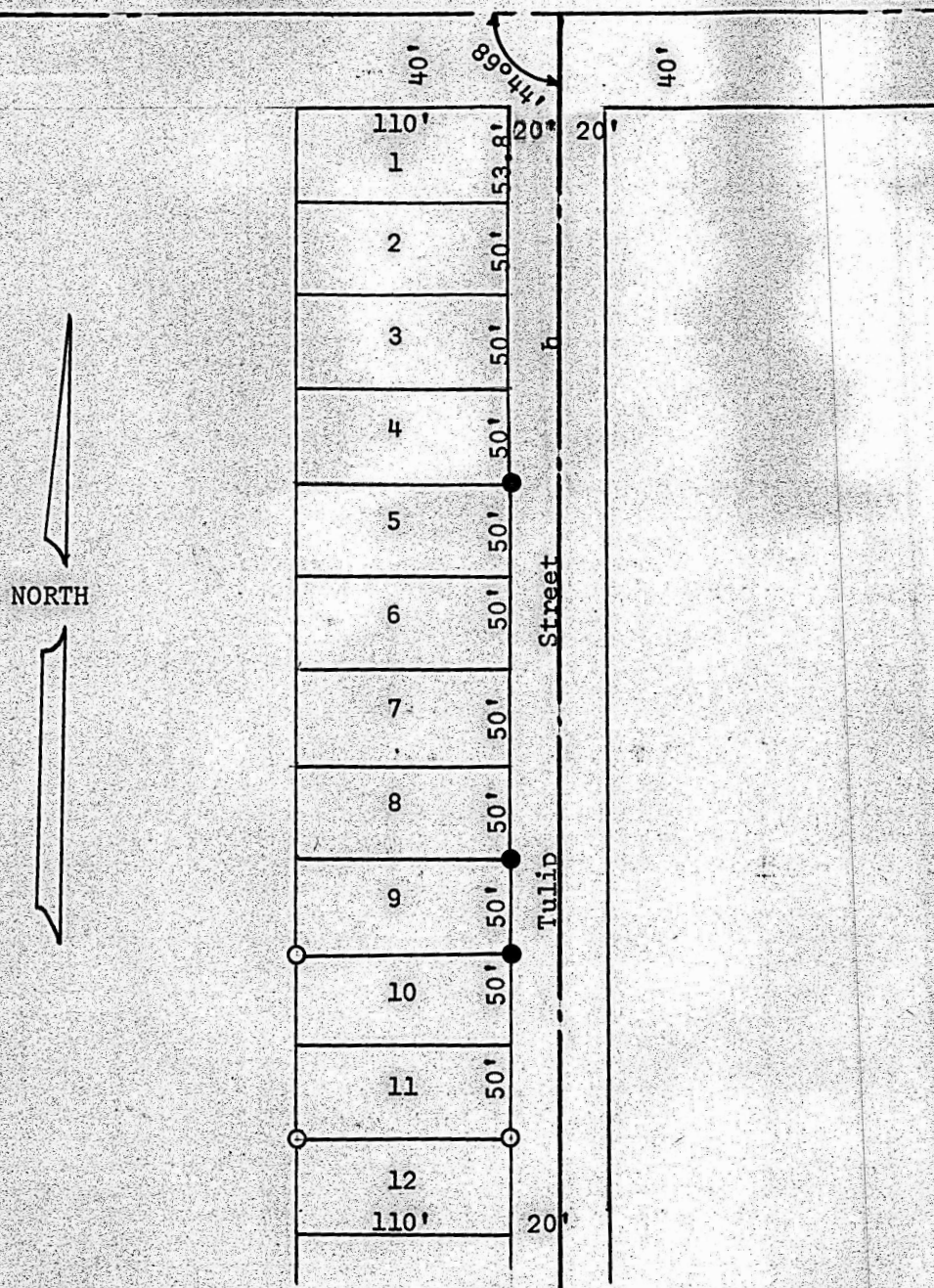


A SURVEY
LOTS 10 AND 11 BLOCK 2
FUNSTON PLACE
MCPHERSON, KANSAS

b Skancke Street



- Set Pins This Survey
- Found Pins This Survey

State of Kansas) SS
County of McPherson)

I, Francis R. Rankin, County Engineer of McPherson County, Kansas, do hereby certify, that the above survey was made under my supervision of Lots 10 and 11, Block 2, Funston Place in The City of McPherson, Kansas, and that the accompanying plat is a true exhibit of said survey as far as it is know to me.

Survey called for by Mr. Becker.

Signed this 12 day of July 1963

Francis R. Rankin
Francis R. Rankin
County Engineer
McPherson, County



MICROFILM