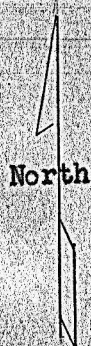
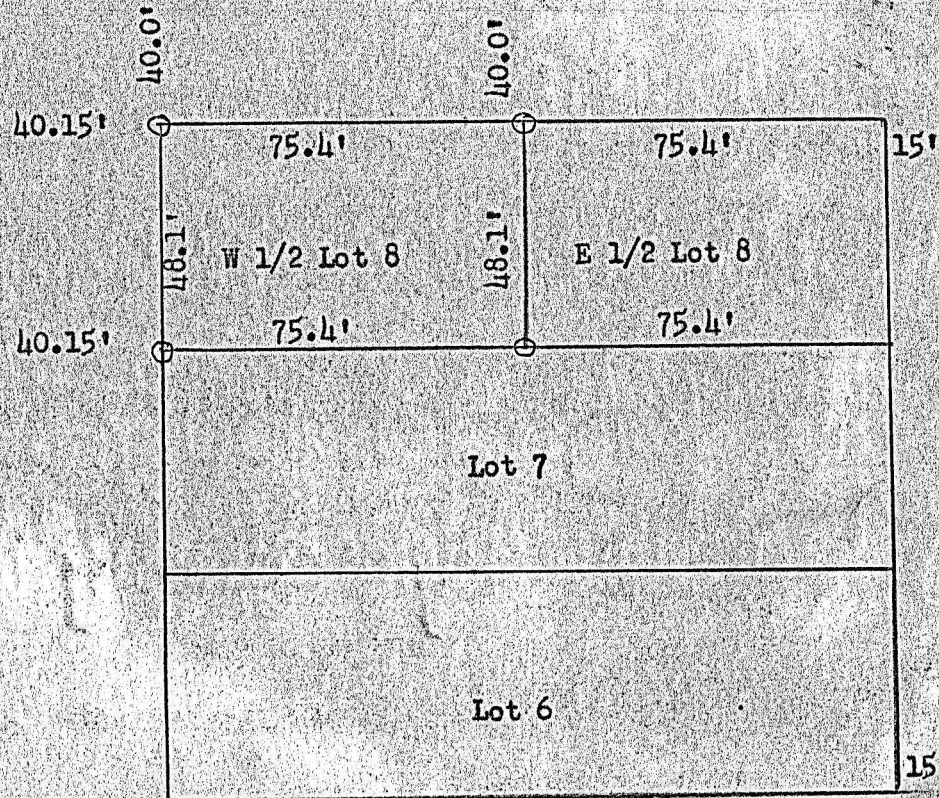


26th, August, 1953



Center Line Fisher Street Pavement

Center Line Hancock Street Pavement



W 1/2 Lot 8  
Block 5  
Funston Place  
Addition to the  
City of McPherson

I, Francis D. Wagner, County Engineer of McPherson County, Kansas, do hereby certify that I did on the 20th day of August, 1953, cause to be done a survey that determined the West 1/2 of Lot 8, Block 5, Funston Place Addition to the City of McPherson and that the accompanying plat is a true exhibit of said survey.