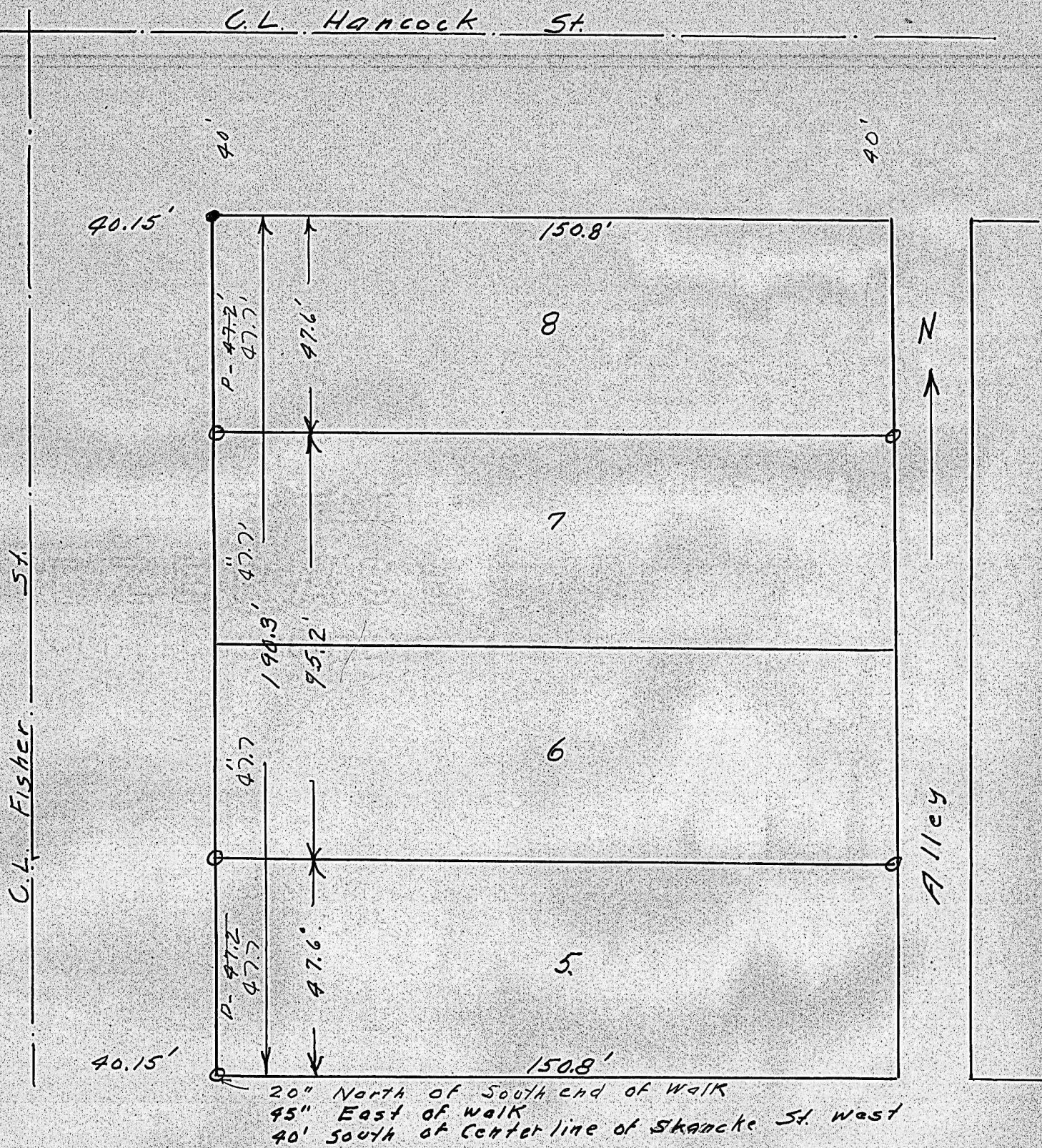


Lots 6 & 7, Block 5, Funston Place Add. McPherson, Kansas.



State of Kansas, County of McPherson, SS.

I, G.D.Johnson, Licensed Civil Engineer of the State of Kansas, do hereby certify that I did on the 22nd. day of June, 1960 survey Lots 6 & 7, Block 5, Funston Place Addition to the City of McPherson, Kansas and that accompanying plat is a true exhibit of said survey.

GD Johnson

