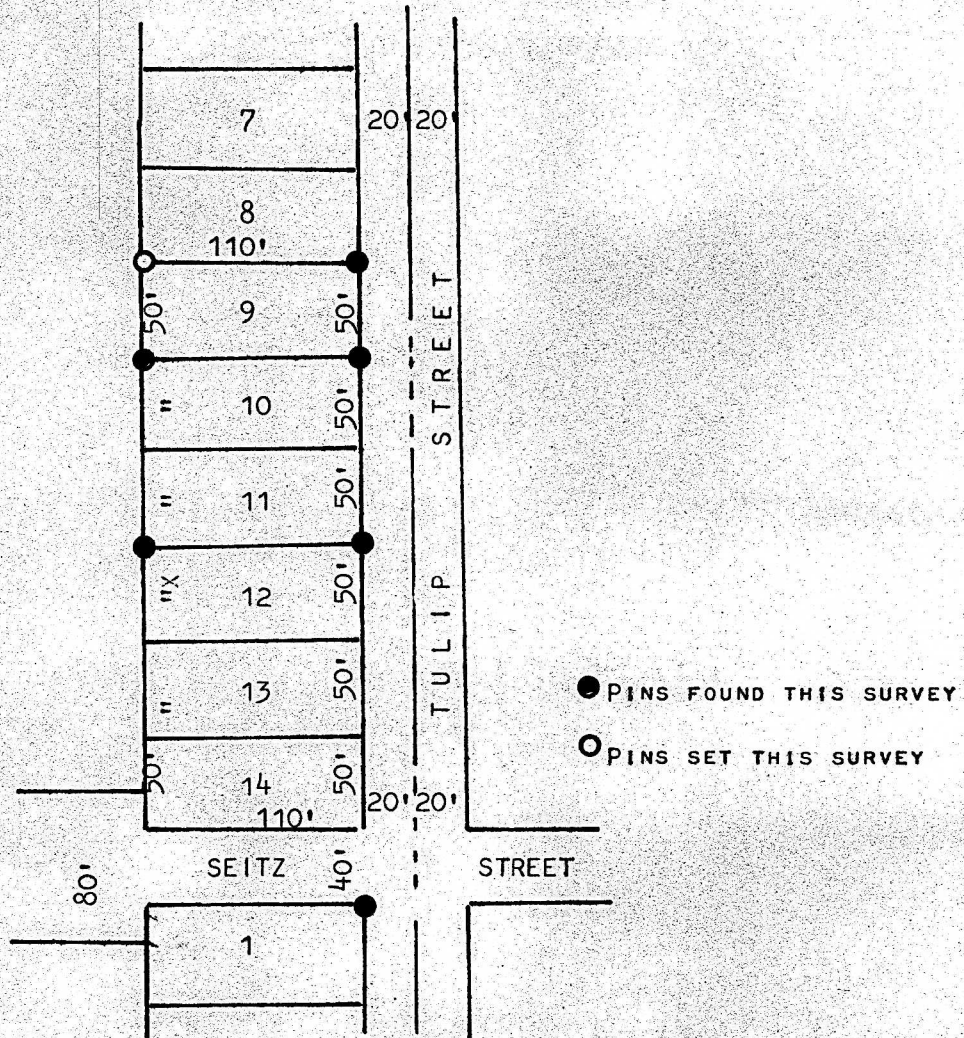


A SURVEY OF LOT 9, BLOCK 2, FUNSTON PLACE  
MCPHERSON, KANSAS



STATE OF KANSAS     ))  
COUNTY OF MCPHERSON ))   SS

I, MELVIN FERGUSON, PROFESSIONAL ENGINEER OF THE STATE OF KANSAS DO HEREBY CERTIFY THAT THE ABOVE SURVEY WAS MADE UNDER MY SUPERVISION OF LOT 9, BLOCK 2, FUNSTON PLACE IN THE CITY OF MCPHERSON, KANSAS, AND THAT THE ACCOMPANYING PLAT IS A TRUE EXHIBIT OF SAID SURVEY AS FAR AS IT IS KNOWN TO ME.

SURVEY CALLED FOR BY E. JOHNSON

SIGNED THIS 7<sup>th</sup> DAY OF SEPTEMBER, 1977

*Melvin Ferguson*  
MELVIN FERGUSON  
PROFESSIONAL ENGINEER  
MCPHERSON, KANSAS

