

SW Corner Block 13
Set 1/2"x24" REbar with ID Cap
Established Location per plat as follows:
1. From County Records July 28, 1964 W1/16, SW 1/4 Sec. 21 T19S R3W
Calc. 70.6' NE to SW corner brick porch corner and
to intersect location 81.4' NW to SE corner of porch
2. From Calc. 1/16 per records then calculated 24.8' N and 29' E to point set.

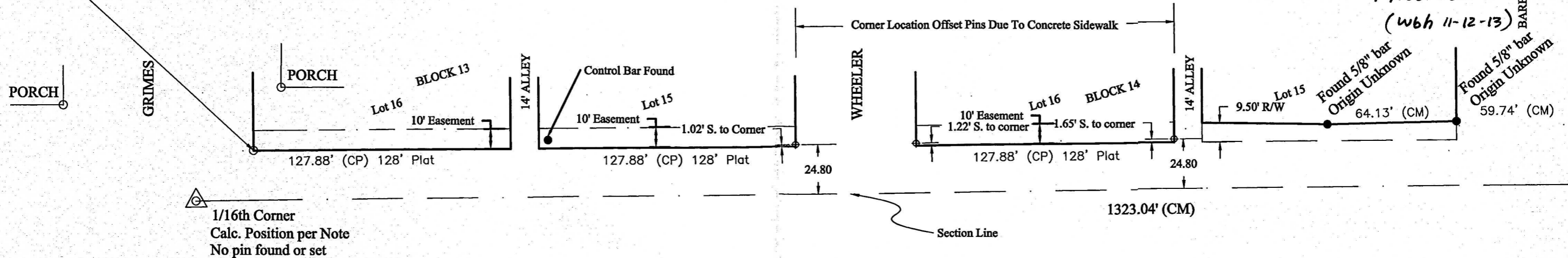


LEGEND

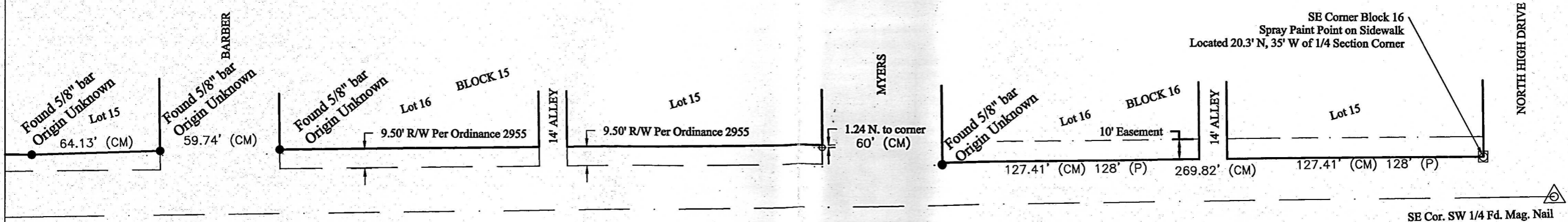
⊕ Set 1/2"x24" Bar on N-S Line at distance
off East-West line of First Street Right of Way

C- Calculated
M- Measured
P-Prorate

Freeman
Addition to
McPherson
Kansas
(wbb 11-12-13)



Surveyors Note: This project was to locate the north right of way line of First Street. Because the existing sidewalk north edge is just north of the right of way, pins were placed at an offset on the N-S line as shown. Survey was performed on March 26, 2012 by Melanie L. Thrower, licensed land surveyor in the State of Kansas. Unless otherwise shown, no other property monuments were found within the vicinity of First Street shown.



McPherson Engineering and Land Surveying
Services
Melanie L. Thrower, P.E., L.S., CFM
845 1800 Ave.
Abilene, KS 67410
785-479-2354

CLIENT: McPherson BPU