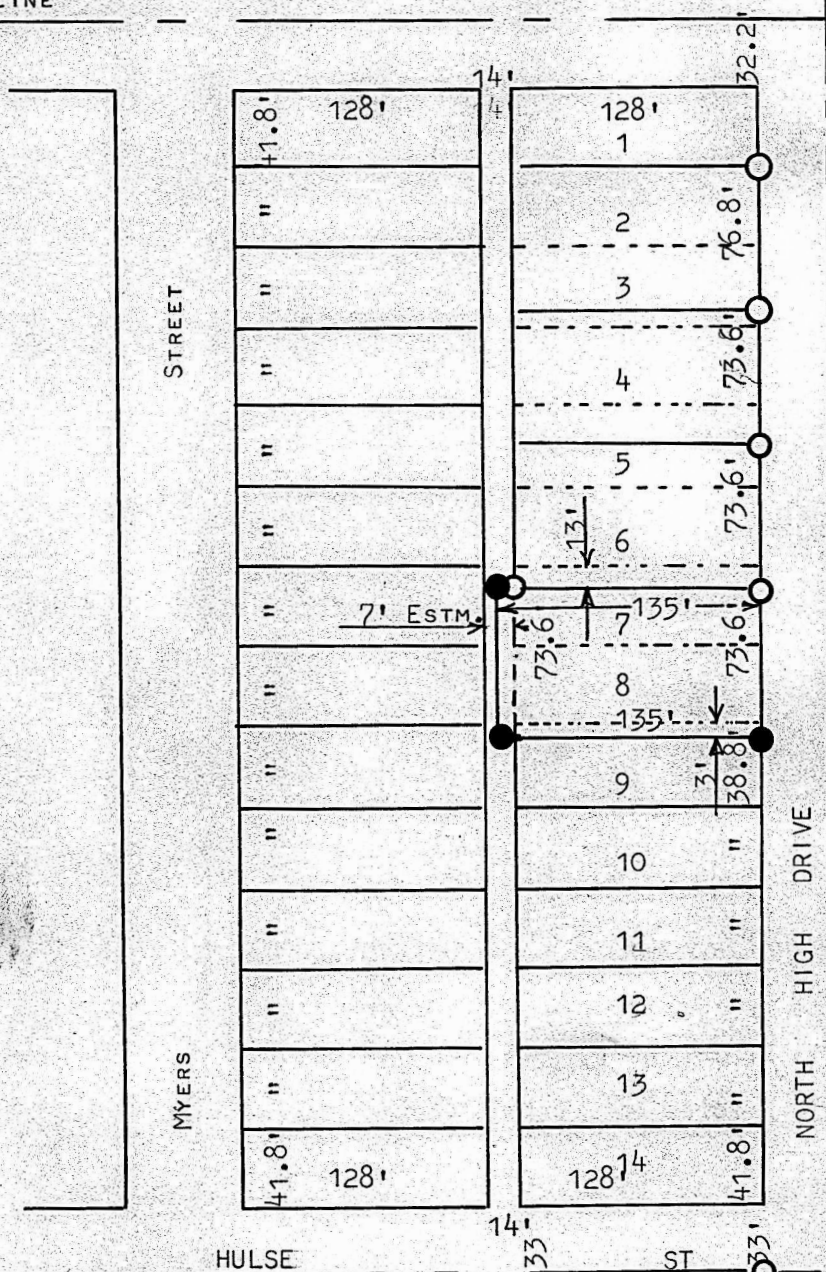


SURVEY LOTS 7,8,9, BLOCK 1
FREEMAN ADDITION
MCPHERSON, KANSAS

1/4 SECTION LINE



- PINS FOUND THIS SURVEY
- PINS SET THIS SURVEY

I, FRANCIS RANKIN, PROFESSIONAL ENGINEER OF THE STATE OF KANSAS, DO HEREBY CERTIFY THAT UNDER MY SUPERVISION A SURVEY WAS MADE OF LOT 7, EXCEPT THE NORTH 13 FEET, ALL OF LOT 8, AND THE NORTH 3 FEET OF LOT 9 AND THE EAST HALF OF THE ALLEY ABUTTING SAID LOTS, OF BLOCK 1, FREEMAN ADDITION, TO THE CITY OF MCPHERSON, KANSAS AND THE ABOVE PLAT IS A TRUE EXHIBIT OF SAID SURVEY AS FAR AS IT IS KNOWN TO ME.

SURVEY CALLED FOR BY BILL DUGUID

SIGNED THIS 13 DAY OF AUGUST, 1967

Francis Rankin
FRANCIS RANKIN
PROFESSIONAL ENGINEER
MCPHERSON, KANSAS



MICROFILM