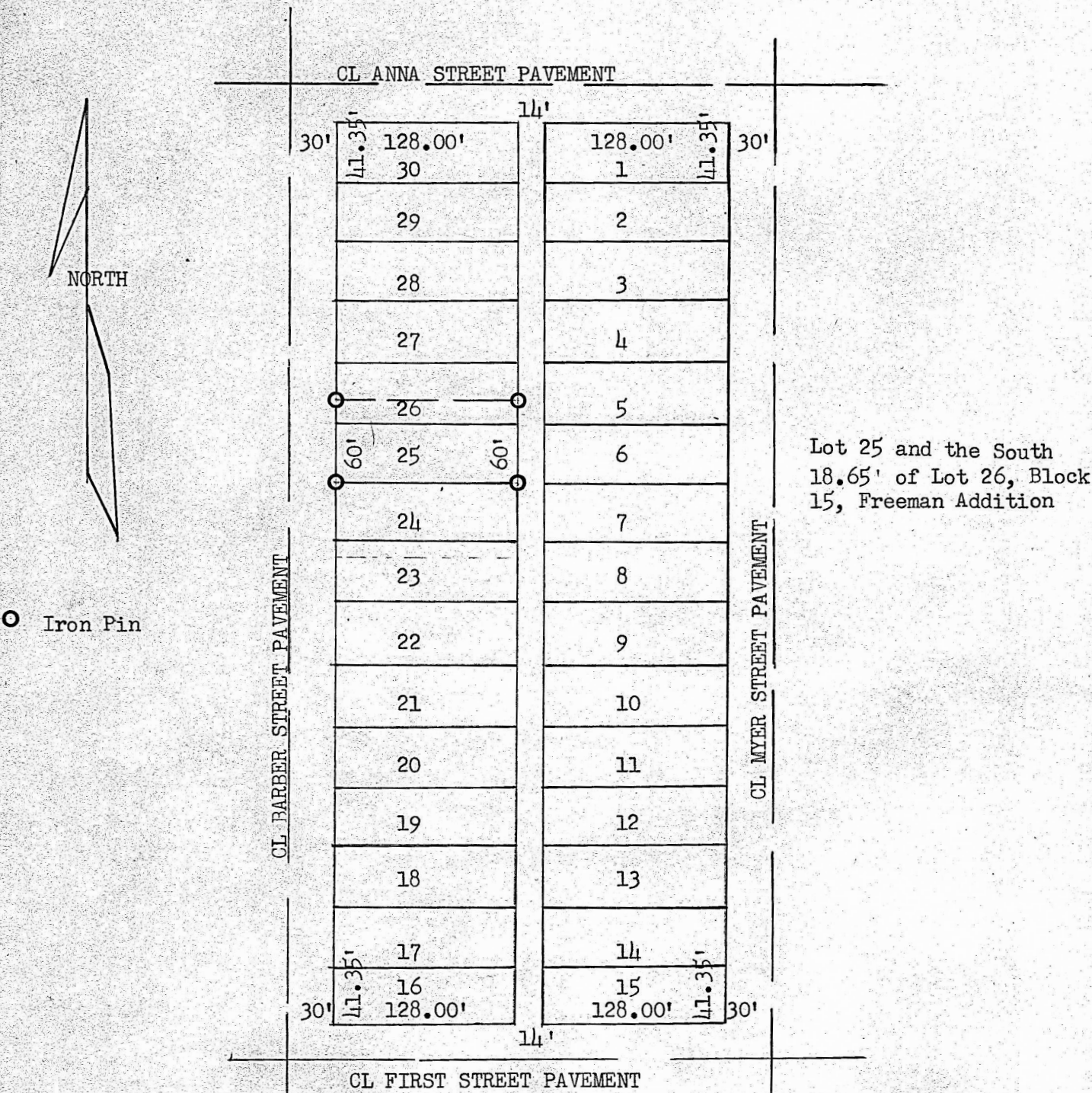


(Copy)

Oct. 4, 1951



State Of Kansas, County of McPherson, ss
I, Francis D. Wagner, County Engineer of McPherson County, Kansas, did on the 3rd day of October, 1951 cause to be done a survey that determined the corners of Lot 25 and the south 18.65' of Lot 26, Block 15 Freeman's Addition in the City of McPherson and that the accompanying plat is a true exhibit of said survey.

FRANCIS D. WAGNER
County Engineer

MICROFILM