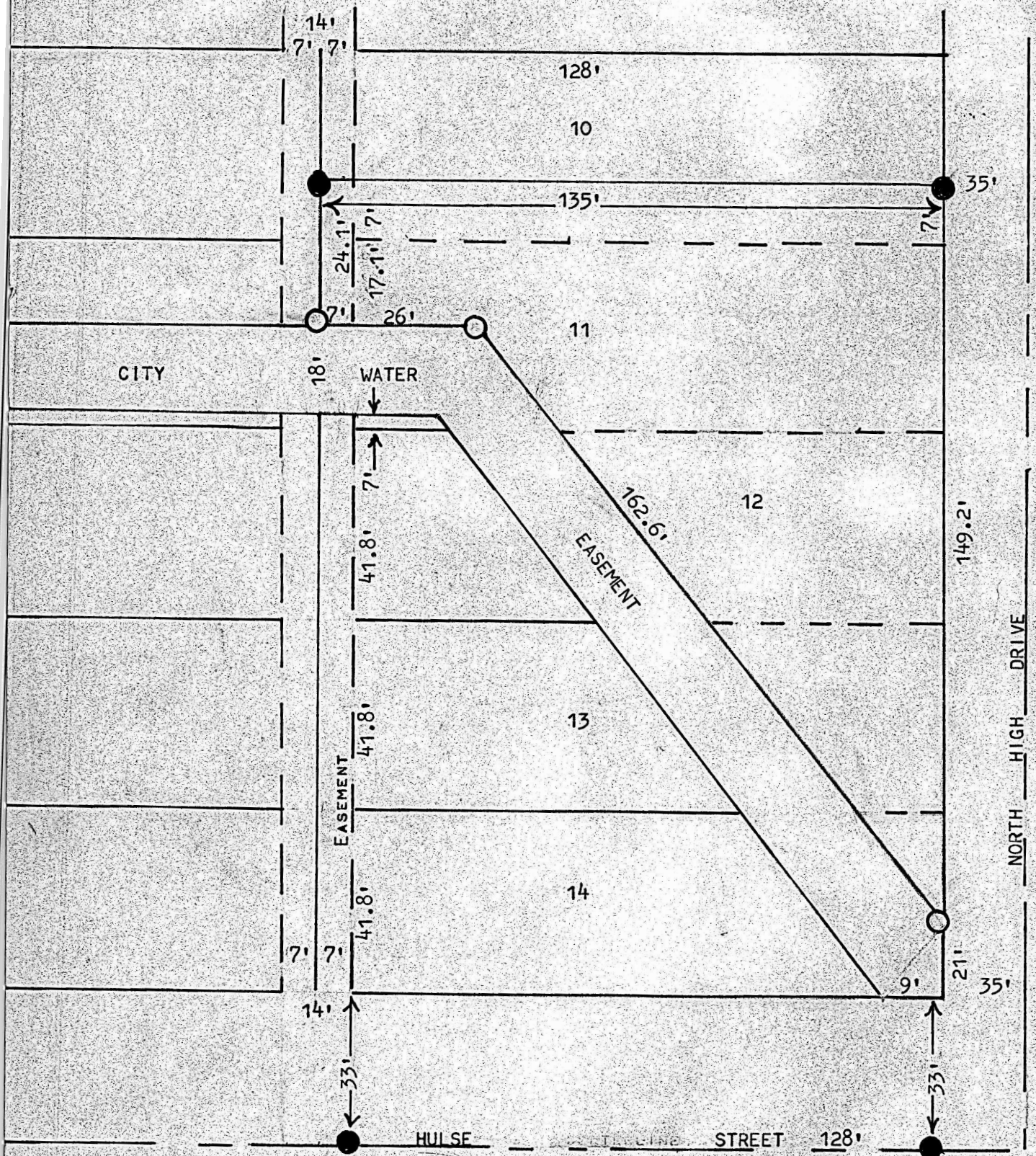


A SURVEY OF PARTS OF LOTS 10, 11, 12, 13, 14

BLOCK 1, FREEMAN ADDITION

MCPHERSON, KANSAS



● PINS FOUND THIS SURVEY

○ PINS SET THIS SURVEY

STATE OF KANSAS)
COUNTY OF MCPHERSON) SS

I, FRANCIS R. RANKIN, COUNTY ENGINEER OF MCPHERSON COUNTY, KANSAS, DO HEREBY CERTIFY THAT UNDER MY SUPERVISION A SURVEY WAS MADE OF ALL PARTS NORTHEAST OF THE CITY WATER EASEMENT CHANNEL OF LOTS 11, 12, 13, 14, AND THE SOUTH 7 FEET OF LOT 11 AND THE EAST HALF OF THE ALLEY ABUTTING SAID LOTS OF BLOCK 1, FREEMAN ADDITION TO THE CITY OF MCPHERSON, KANSAS, AND THAT THE ABOVE PLAT IS A TRUE EXHIBIT OF SAID SURVEY AS FAR AS IT IS KNOWN TO ME.

SURVEY CALLED FOR BY H - O BUILDING.

SIGNED THIS 5 DAY OF JUNE

Francis R. Rankin
FRANCIS RANKIN
COUNTY ENGINEER
MCPHERSON COUNTY, KANSAS



MICROFILM