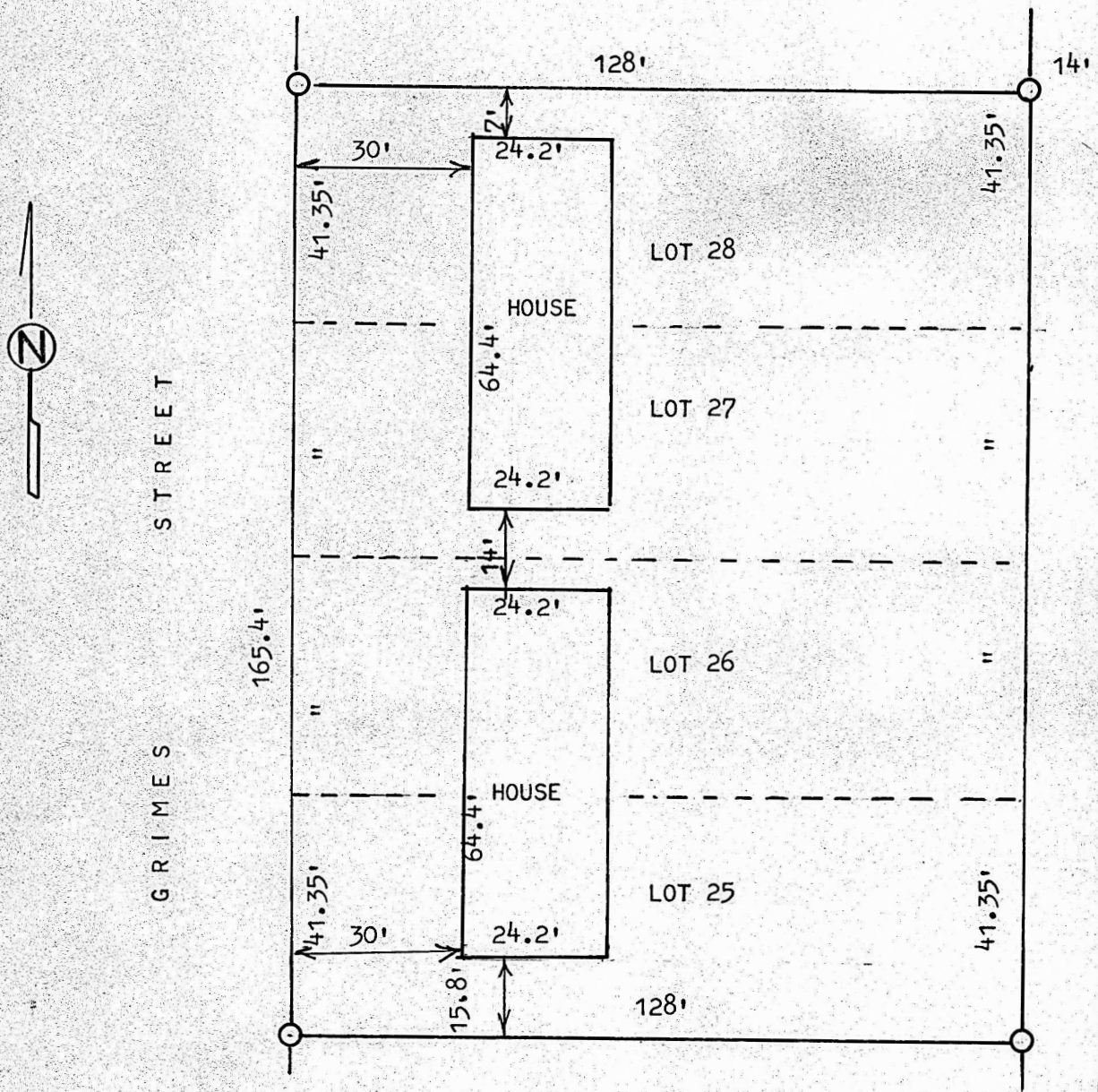


A SURVEY OF LOTS 25, 26, 27 AND 28 BLOCK 13  
FREEMAN ADDITION, MCPHERSON, KANSAS



○ PINS FOUND AS SET BY J.L. GRIFFIS LAND SURVEYOR ON THE 20TH DAY OF NOVEMBER, 1980, AND FILED IN THE CITY ENGINEER OFFICE.

STATE OF KANSAS ) SS  
COUNTY OF MCPHERSON )

I, MELVIN FERGUSON PROFESSIONAL ENGINEER OF THE STATE OF KANSAS DO HEREBY CERTIFY THAT UNDER MY SUPERVISION THAT THE HOUSES WERE LOCATED ON LOTS, 25, 26, 27 AND 28, BLOCK 13 OF FREEMAN ADDITION TO THE CITY OF MCPHERSON, KANSAS AND THE ABOVE PLAT IS A TRUE EXHIBIT OF SAID SURVEY AS FAR AS IT IS KNOWN TO ME.

SURVEY REQUESTED BY MCPHERSON BANK AND TRUST ( C. WILLIAMS )

SIGNED THIS 17<sup>th</sup> DAY OF AUGUST, 1981

MELVIN FERGUSON  
PROFESSIONAL ENGINEER  
MCPHERSON, KANSAS

