

*Not there*

58.27'  
41.35'  
20.67'

Bill Freeman:  
M. Long  
93 1/2 N Bank

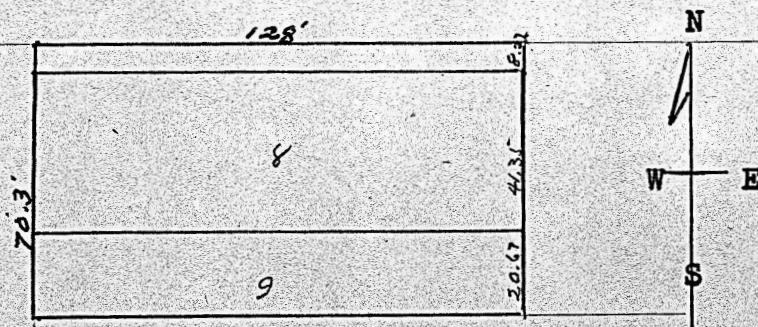
H. A. ROWLAND • Kansas Licensed Civil Engineer

Member

National Society Professional Engineers  
Kansas Society Professional Engineers  
Kansas Engineering Society

PHONE 796 X

McPHERSON, KANSAS



Scale 1 in. to 50 feet.

STATE OF KANSAS,  
McPherson County, ss.,

THIS IS TO CERTIFY, That the above plat is in accordance to a survey of a tract consisting of the South 8.27 feet off the lot 7, all of lot 8 and the North one-half of lot 9 in Freeman Addition to McPherson, Kansas and located in Block 11 of the same Dated at McPherson, Kansas. Sep. 25th 1950.

Signed:-

*H. A. Rowland*

Registered Professional Engineer.



8.27  
41.35  
20.67  
70.27

MICROFILM