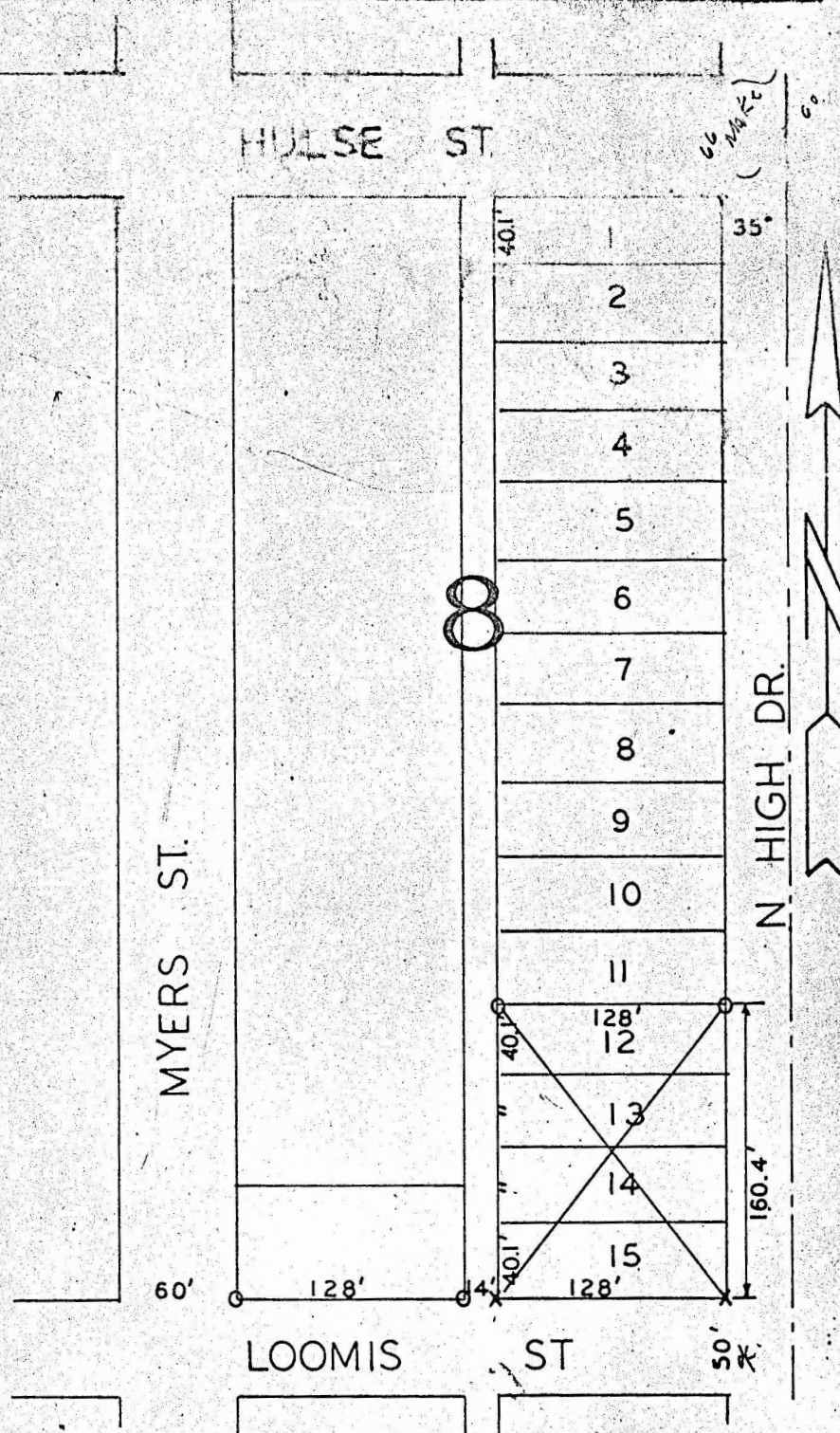


LOT 12-13-14-15 BLOCK 8 FREEMAN ADD.



X - PINS SET ON SURVEY

STATE OF KANSAS }
CITY OF McPHERSON } SS

I, CHARLES E. STACY, CITY ENGINEER OF McPHERSON, DO HEREBY CERTIFY THAT I DID CAUSE TO BE DONE ON THE 19th DAY OF MARCH 1966 A SURVEY OF THE LOTS 12, 13, 14, 15, BLOCK 8, OF FREEMAN ADDITION TO THE CITY OF McPHERSON, McPHERSON COUNTY, KANSAS; AND THAT THE ABOVE PLAT IS A TRUE EXHIBIT OF SAID SURVEY.

MARCH 23, 1966

Charles E. Stacy
CHARLES E. STACY, P.E.

MICROFILM

SURVEY REQUESTED BY: