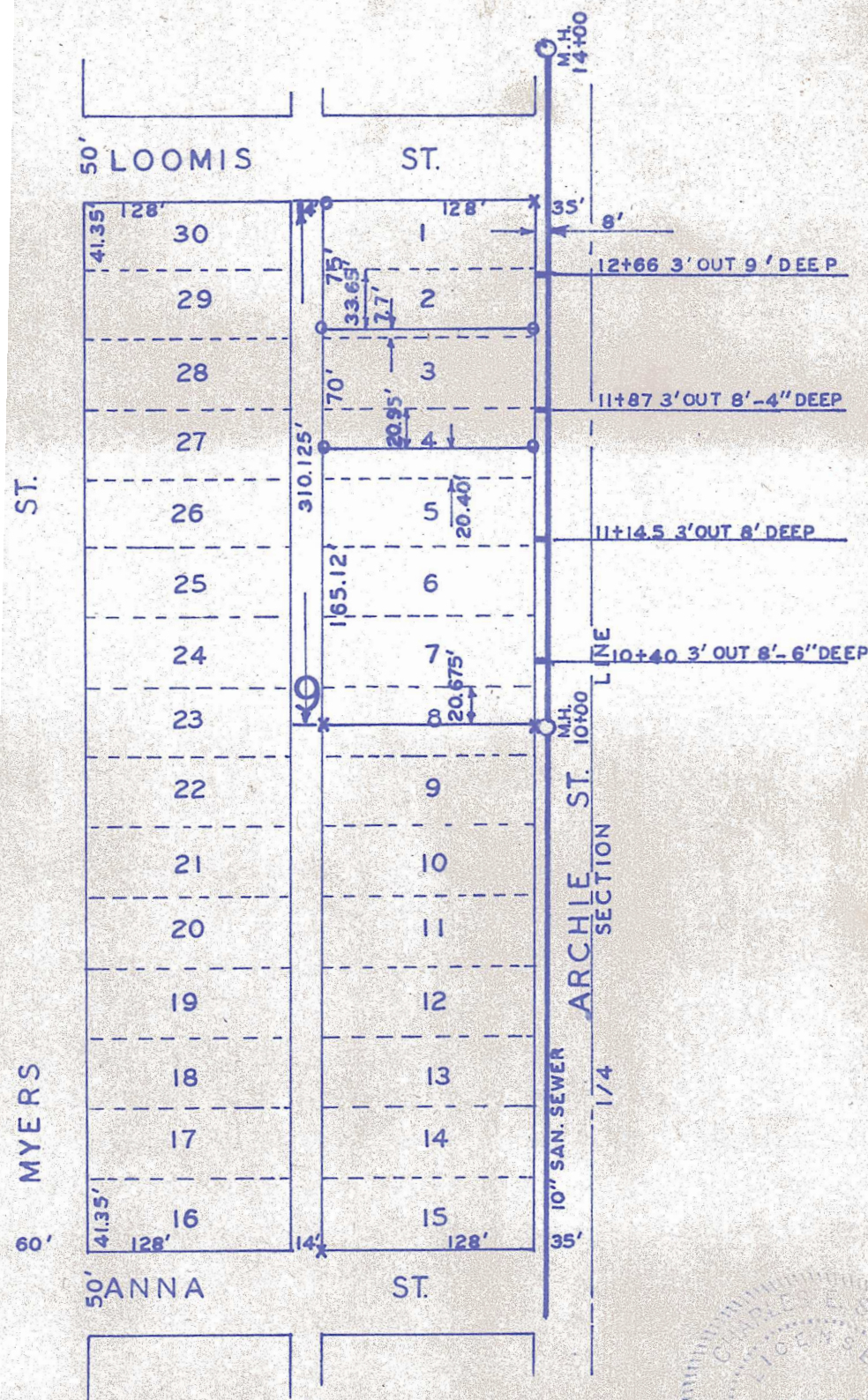


County

AN

ADDITION

LOT. 1 TO N1/2 OF LOT 8 BLOCK 9.



S. E. STACY, CITY ENGINEER OF THE CITY OF McPHERSON
IFY THAT I DID CAUSE TO BE DONE THE 27th DAY OF JUNE
TO ESTABLISH THE LOTS 1 TO 7 INCLUSIVE AND THE NORTH
BLOCK 9, OF FREEMAN ADDITION TO THE CITY OF McPHERSON,
IS A TRUE EXHIBIT OF SAID SURVEY.

Charles E. Stacy
CHARLES E. STACY
CITY ENGINEER