

SURVEY IN BLOCK 8
FREEMAN ADDITION
MC PHERSON, KANSAS

State of Kansas)
County of McPherson) SS

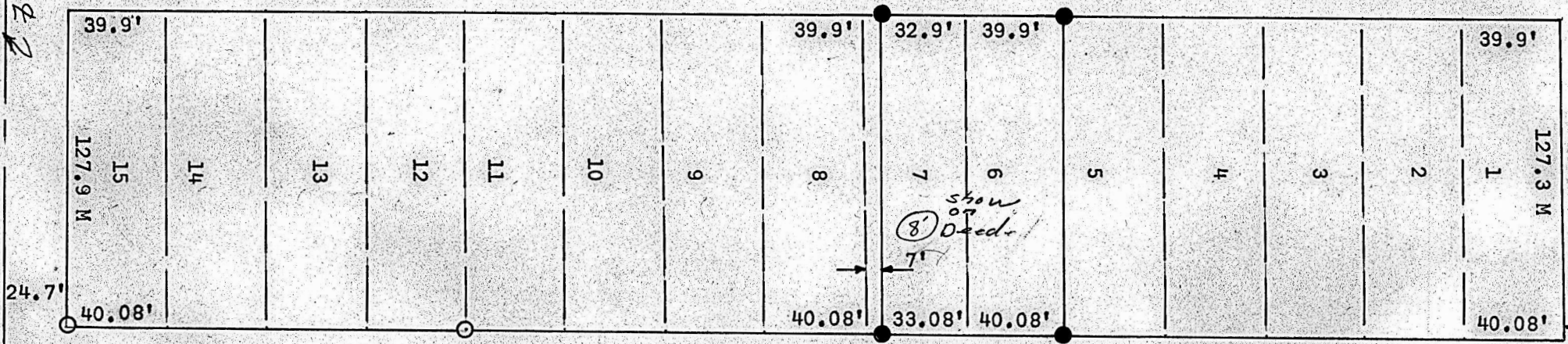
I, F. R. Rankin, County Engineer of McPherson, Kansas, do hereby certify that under my supervision a survey was made of Lot 6 and Lot 7 except the South 7 feet of Lot 7, Block 8 of Freeman Addition to the city of McPherson, Kansas and the accompanying plat is a true exhibit of said survey as far as it is known to me. Signed this 23 day of November 1966

John Funbin

F. R. Rankin
County Engineer, McPherson, Kansas

Survey called for by Contractors Material & Supply

597.9'



North High Drive

NORTH

25' Loomis 2 24.7' St.

Pins Set	Pins Found
1	1
2	2
3	3
4	4
5	5
6	6
7	7
8	8
9	9
10	10
11	11
12	12
13	13
14	14
15	15
16	16
17	17
18	18
19	19
20	20
21	21
22	22
23	23
24	24
25	25
26	26
27	27
28	28
29	29
30	30
31	31
32	32
33	33
34	34
35	35
36	36
37	37
38	38
39	39
40	40
41	41
42	42
43	43
44	44
45	45
46	46
47	47
48	48
49	49
50	50
51	51
52	52
53	53
54	54
55	55
56	56
57	57
58	58
59	59
60	60
61	61
62	62
63	63
64	64
65	65
66	66
67	67
68	68
69	69
70	70
71	71
72	72
73	73
74	74
75	75
76	76
77	77
78	78
79	79
80	80
81	81
82	82
83	83
84	84
85	85
86	86
87	87
88	88
89	89
90	90
91	91
92	92
93	93
94	94
95	95
96	96
97	97
98	98
99	99
100	100

FILM