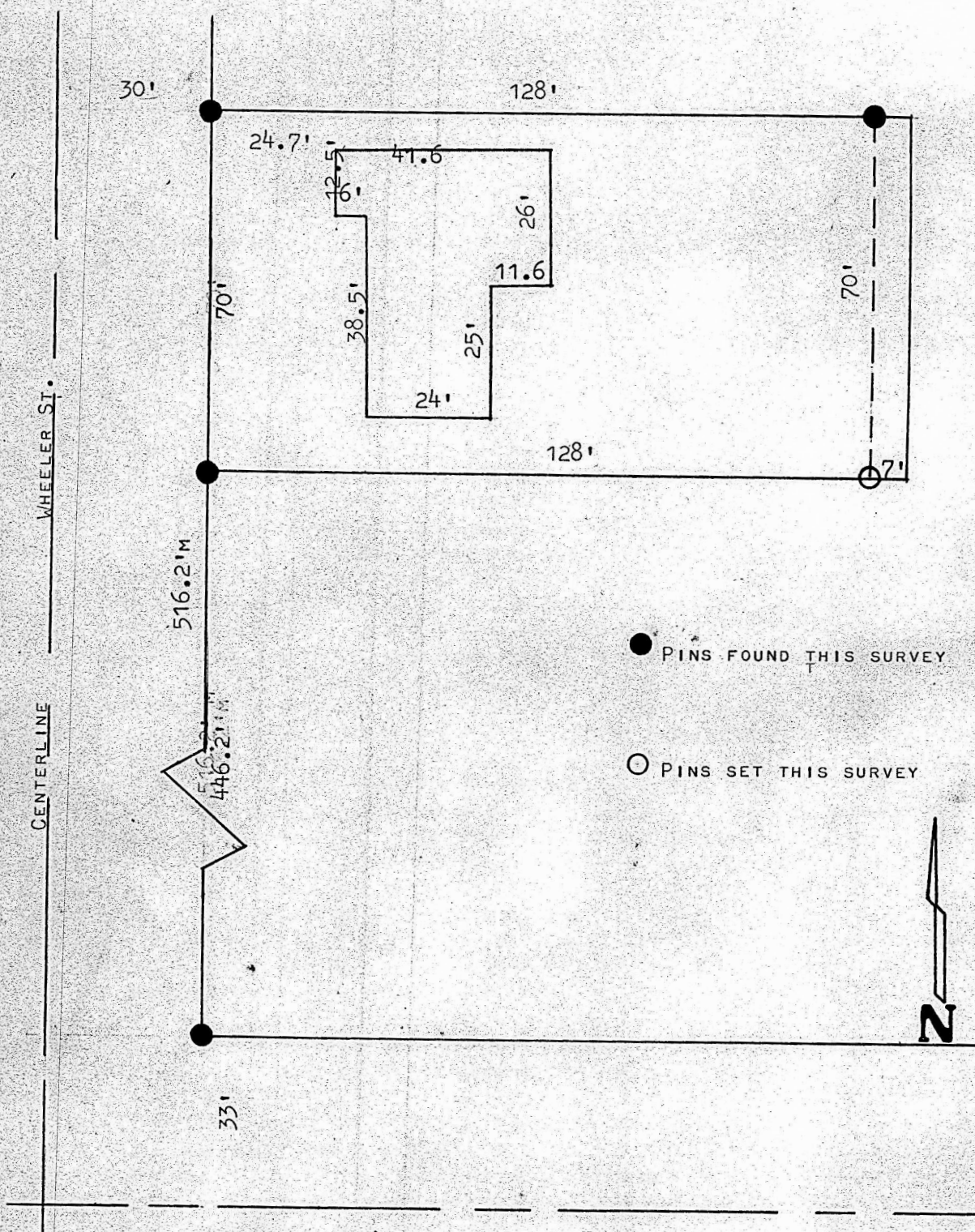


A SURVEY IN THE WEST 1/2 OF BLOCK 2
FREEMAN ADDITION
CITY OF McPHERSON, KANSAS



STATE OF KANSAS)
COUNTY OF McPHERSON) ss

I FRANCIS RANKIN, COUNTY ENGINEER OF McPHERSON COUNTY, KANSAS, DO HEREBY CERTIFY THAT UNDER MY SUPERVISION A SURVEY WAS MADE OF PART OF THE WEST 1/2 OF BLOCK 2, FREEMAN ADDITION TO THE CITY OF McPHERSON, DESCRIBED AS FOLLOWS: BEGINNING AT A POINT 446.2 FEET NORTH OF THE SOUTHWEST CORNER OF SAID BLOCK 2, THENCE EAST 128 FEET, THENCE NORTH 70 FEET, THENCE WEST 128 FEET, THENCE SOUTH 70 FEET TO PLACE OF BEGINNING TOGETHER WITH THE WEST HALF OF THE ALLEY ABUTTING THEREON AND REVERTING THERETO BY REASON OF VACATION, AND THAT THE ABOVE PLAT IS A TRUE EXHIBIT AS FAR AS IT IS KNOWN TO ME.

SURVEY CALLED FOR BY DUGUID INVESTMENT CO.

SIGNED THIS 31 DAY OF AUGUST, 1967

FRANCIS RANKIN
COUNTY ENGINEER
McPHERSON Co., KS



MICROFILM