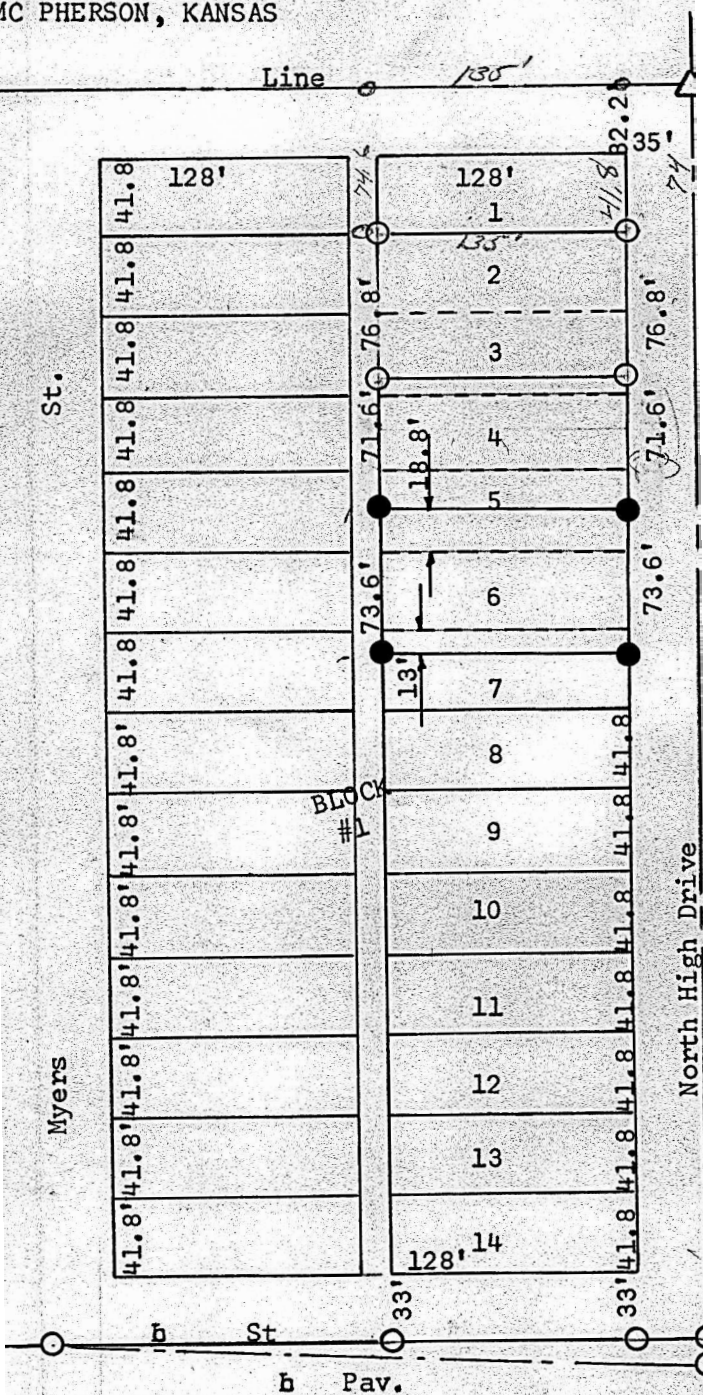


VEY LOT 5, 6 & 9, BLOCK 1  
FREEMAN ADDITION  
MC PHERSON, KANSAS



urvey  
y

) SS

Engineer of McPherson County, Kansas, do hereby  
pervision a survey was made of the South 18.  
t 6 and the North 13 feet of Lot 7, Block 1.  
City of McPherson, Kansas and the above plat  
urvey as far as it is known to me.

1 Duguid

July 1967



**MICROFILM**