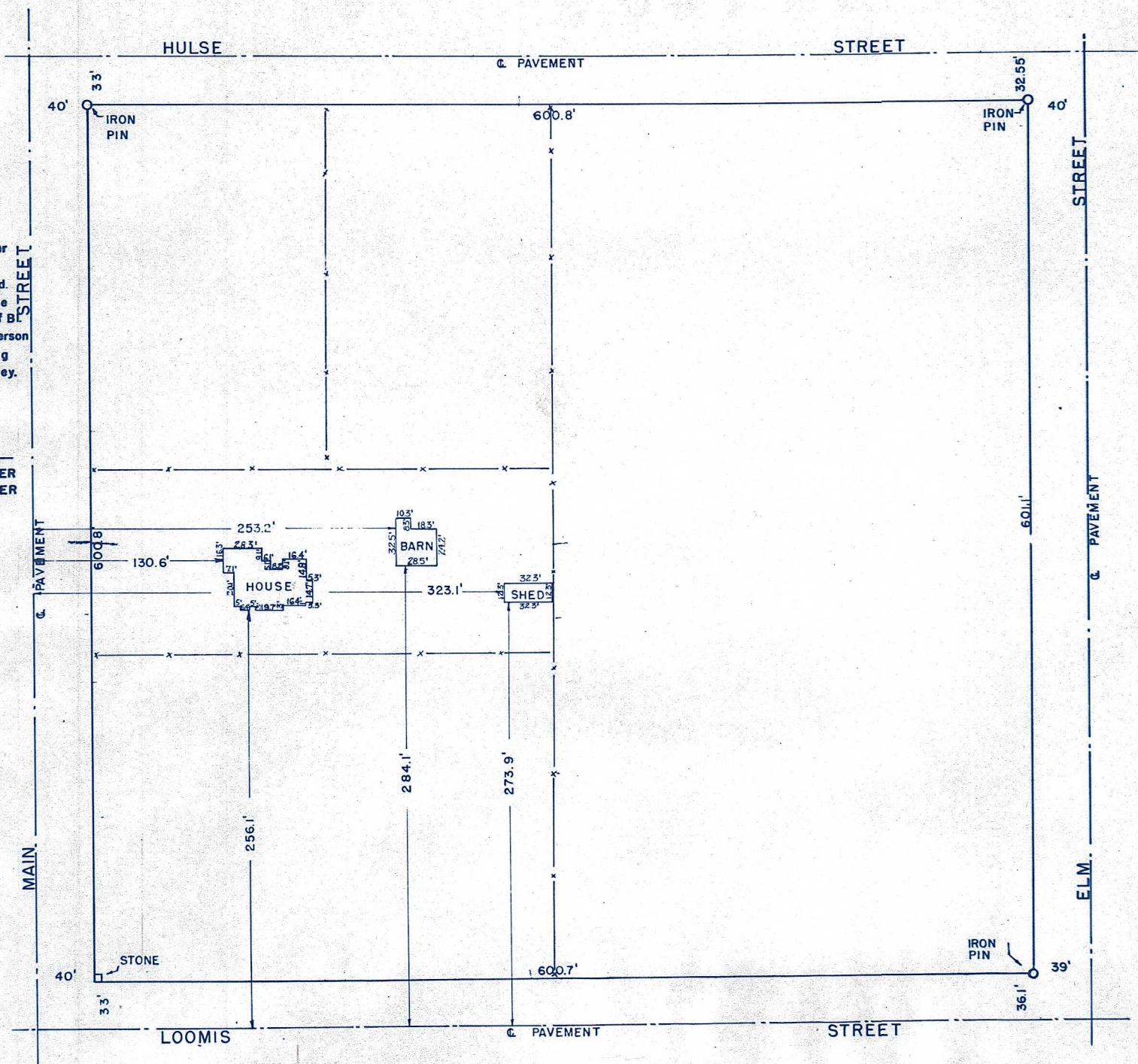


I, Francis D. Wagner, County Engineer of McPherson County, Kansas, do hereby certify that I did on the 2nd day of June, 1950, survey the House Location and determine the Cors. of BL 3 FOUTS ADD., in the city of McPherson Kansas, and that the accompanying plat is a true exhibit of said survey.

A circular postmark from New York, dated 1894. The text "NEW YORK" is at the top, "1894" is at the bottom, and "JAN 10" is in the center.



MICROFILM