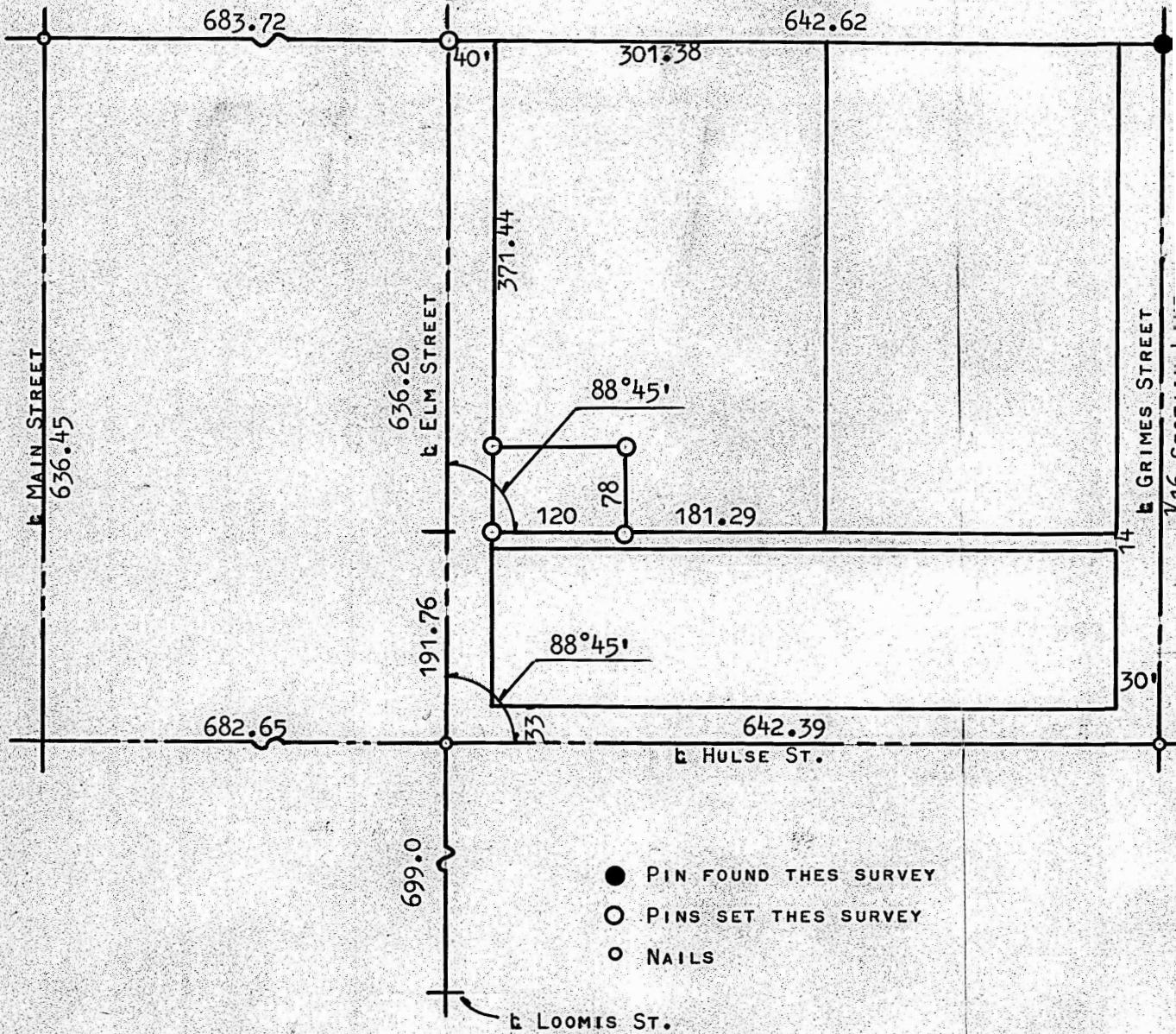


A SURVEY OF THE W120' OF S78' OF N142' OF LOT 3, BLOCK 1
FOUTS FIRST ADDITION TO THE CITY OF McPHERSON, KS.



STATE OF KANSAS)
COUNTY OF McPHERSON)

I, FRANCIS R. RANKIN, COUNTY ENGINEER OF McPHERSON COUNTY, KANSAS, DO HEREBY CERTIFY, THAT THE ABOVE SURVEY WAS MADE UNDER MY SUPERVISION OF THE W120' OF S78' OF N142' OF LOT 3, BLOCK 1, FOUTS FIRST ADDITION IN THE CITY OF McPHERSON, KANSAS, AND THAT THE ACCOMPANYING PLAT IS THE TRUE AND CORRECT COPY OF SAID SURVEY AS FAR AS IT IS KNOWN TO ME.

SURVEY CALLED FOR BY BOB PERRIN

SIGNED THIS 30 DAY OF Dec 1964.

FRANCIS R. RANKIN
COUNTY ENGINEER
McPHERSON Co., Ks.