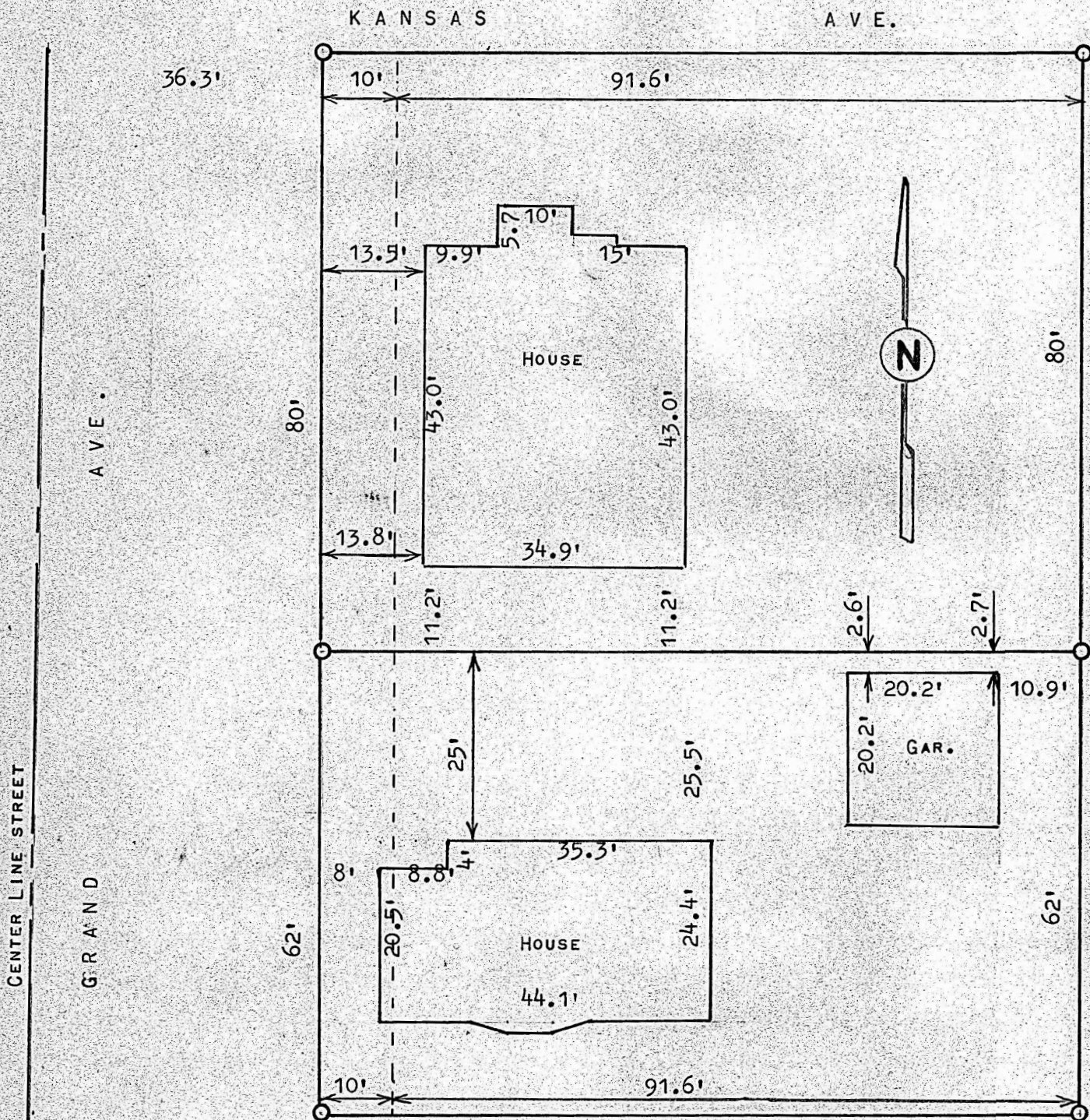


A SURVEY OF LOT 3, BLOCK 1,
FISHER ADD. MCPHERSON, KANSAS



○ PINS SET THIS OR PREVIOUS SURVEY

STATE OF KANSAS)
COUNTY OF MCPHERSON) SS

I, FRANCIS RANKIN, PROFESSIONAL ENGINEER OF THE STATE OF KANSAS DO HEREBY CERTIFY THAT UNDER MY SUPERVISION A SURVEY WAS MADE OF THE SOUTH 62 FEET AND THE WEST 91.6 FEET OF LOT 3, BLOCK 1, AND THE EAST 10 FEET OF GRAND AVE. THATS BEEN VACATED, FISHER ADDITION TO THE CITY OF MCPHERSON, KANSAS, AND THAT THE ACCOMPANYING PLAT IS A TRUE EXHIBIT OF SAID SURVEY AS FAR AS IT IS KNOWN TO ME.

SURVEY CALLED FOR BY PERRIN REAL EST.

SIGNED THIS 21 DAY OF MARCH, 1973

Francis Rankin
FRANCIS RANKIN
PROFESSIONAL ENGINEER
MCPHERSON, KANSAS



MICROFILM