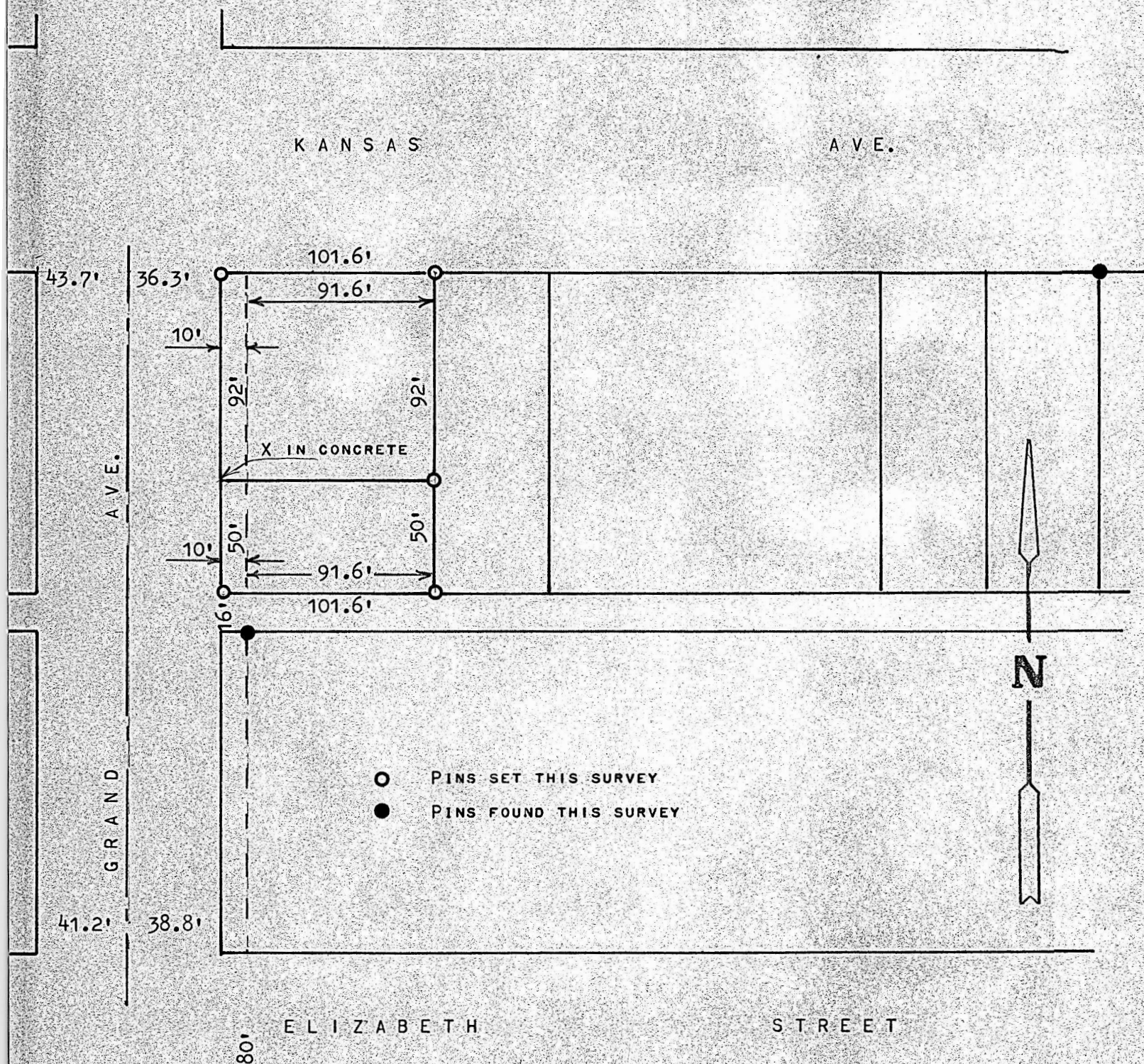


A SURVEY OF LOT 3, BLOCK 1,  
FISHER ADDITION, MCPHERSON, KANSAS



STATE OF KANSAS )  
COUNTY OF MCPHERSON ) SS

I, FRANCIS RANKIN, PROFESSIONAL ENGINEER OF THE STATE OF KANSAS DO HEREBY CERTIFY THAT UNDER MY SUPERVISION A SURVEY WAS MADE OF THE WEST 91.6 FEET OF LOT 3, BLOCK 1, EXCEPT THE SOUTH 50 FEET, AND THE EAST 10 FEET OF GRAND AVE. THATS BEEN VACATED, FISHER ADDITION TO THE CITY OF MCPHERSON, KANSAS, AND THAT THE ACCOMPANYING PLAT IS A TRUE EXHIBIT OF SAID SURVEY AS FAR AS IT IS KNOWN TO ME.

SURVEY CALLED FOR BY ROY SAGER ( REAL ESTATE )

SIGNED THIS 22 DAY OF MAY, 1972

*Francis Rankin*  
FRANCIS RANKIN  
PROFESSIONAL ENGINEER  
MCPHERSON, KANSAS

