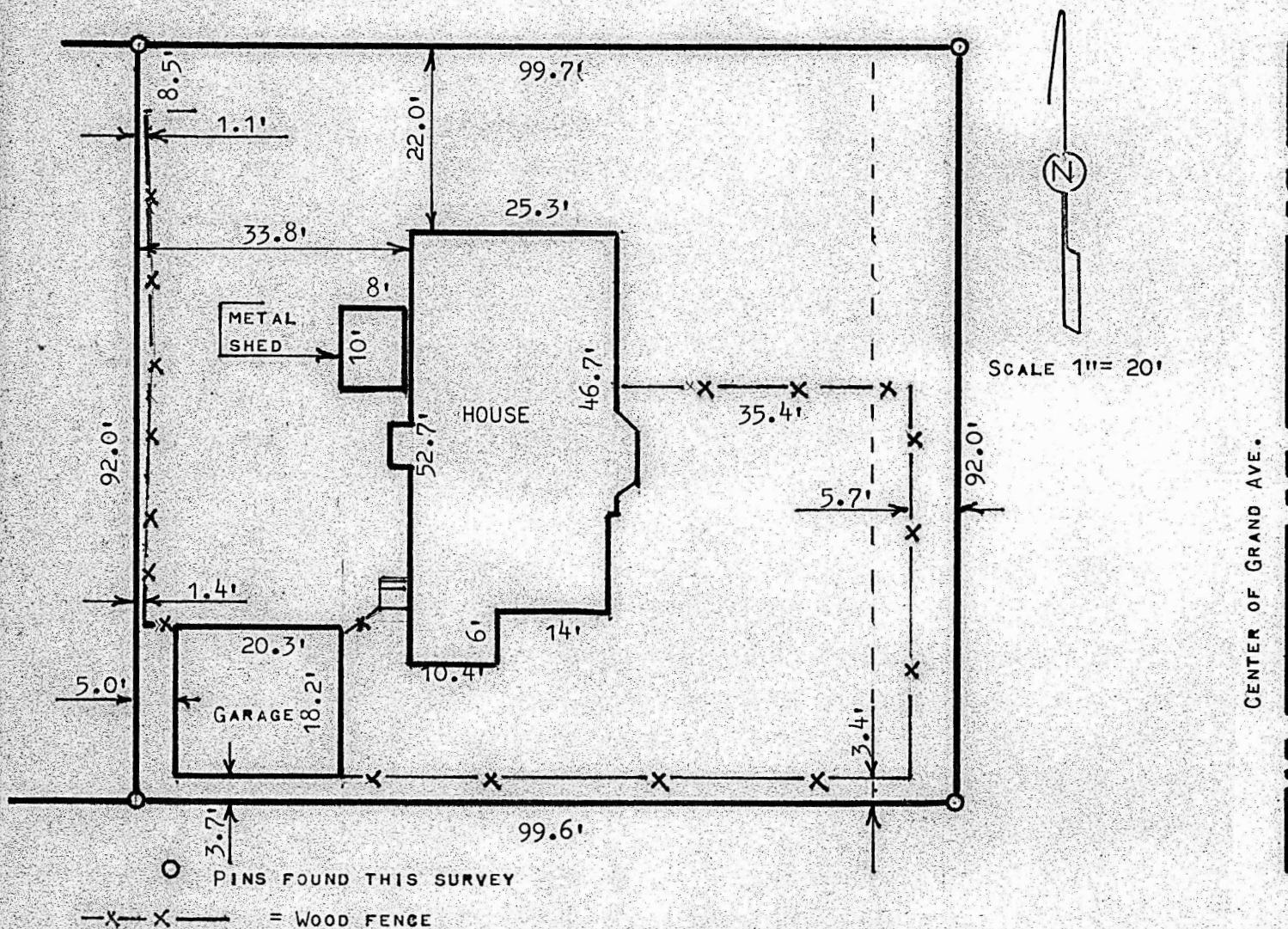


A SURVEY IN LOT 1, BLOCK 2
FISHERS ADDITION
MCIPHERSON, KANSAS



STATE OF KANSAS)
COUNTY OF MCPHERSON) SS

I, MELVIN FERGUSON, PROFESSIONAL ENGINEER OF THE STATE OF KANSAS DO HEREBY CERTIFY THAT UNDER MY SUPERVISION A SURVEY WAS MADE TO DETERMINE THE LOCATION OF IMPROVEMENTS ON THE NORTH 92 FEET OF THE EAST 90 FEET OF LOT 1, BLOCK 2, FISHERS ADDITION AND THE WEST 10 FEET VACATED FROM GRAND AVE., AND THAT THE ABOVE PLAT IS A TRUE EXHIBIT OF SAID SURVEY AS FAR AS IT IS KNOWN TO ME.

SURVEY CALLED FOR BY MCPHERSON STATE BANK AND TRUST (CHARLES WILLIAMS)

SIGNED ON THIS 21st DAY OF MARCH, 1980

Melvin Ferguson
MELVIN FERGUSON
PROFESSIONAL ENGINEER
MCPHERSON, KANSAS

