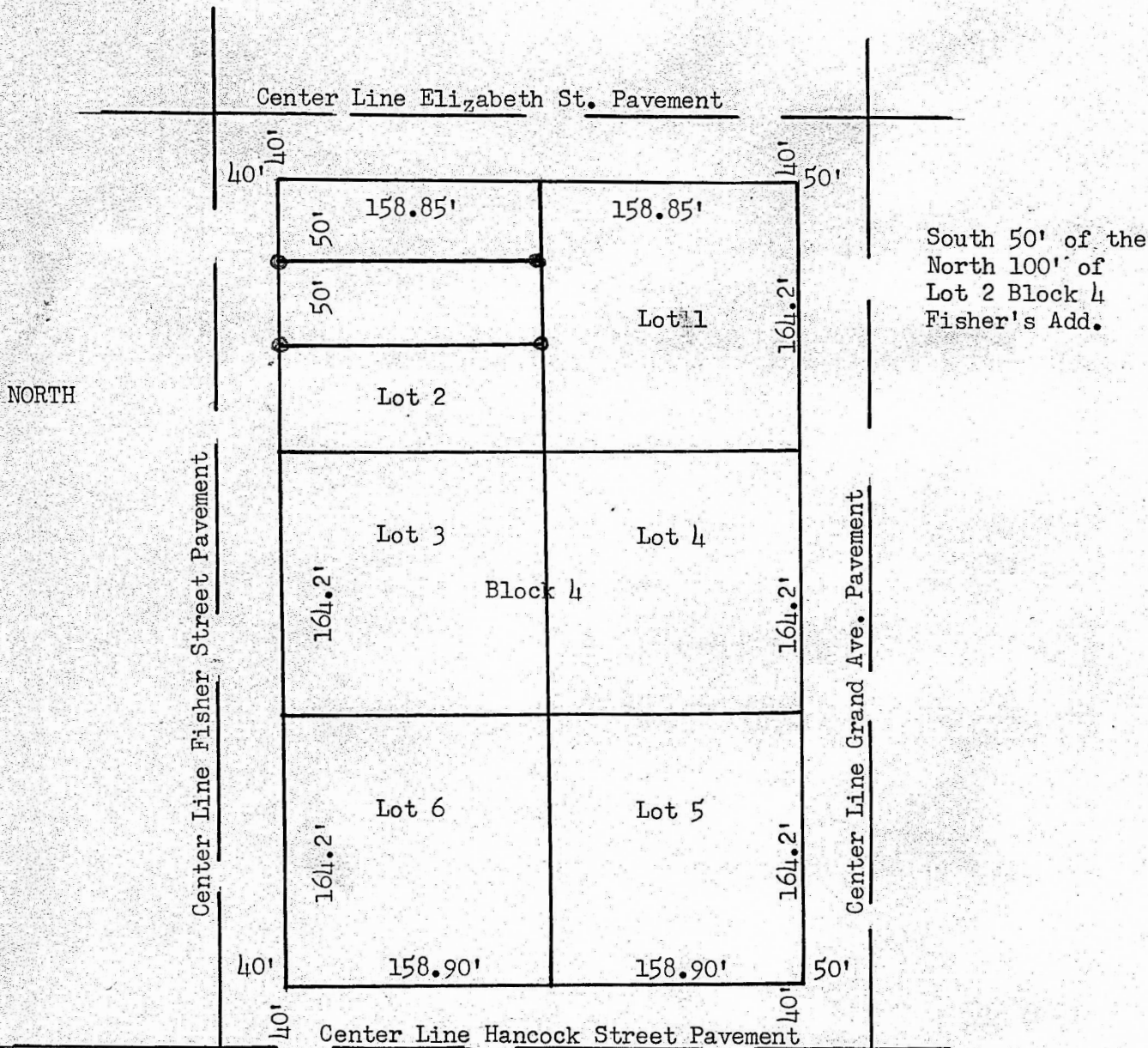


(Copy)

20th July, 1950



State of Kansas, County of McPherson, ss

I, Francis D. Wagner, County Engineer of McPherson County, Kansas, do hereby certify that I did on 20th. day July, 1950, survey and stake the South 50' of the North 100' of Lot 2 Block 4 Fisher's Addition to the City of McPherson, and that the accompanying Plat is a true exhibit of said survey.

Francis D. Wagner
Francis D. Wagner
County Engineer



MICROFILM