

2617'P.

2618'M.

COMMON  
SECTION  
CORNER  
16-17-21  
&20-19-3  
RIVET

FAIRMOUNT  
ADDITION

BLOCK  
THREE

BLOCK  
TWO

BLOCK  
ONE

STATE OF KANSAS )SS  
COUNTY OF McPHERSON)

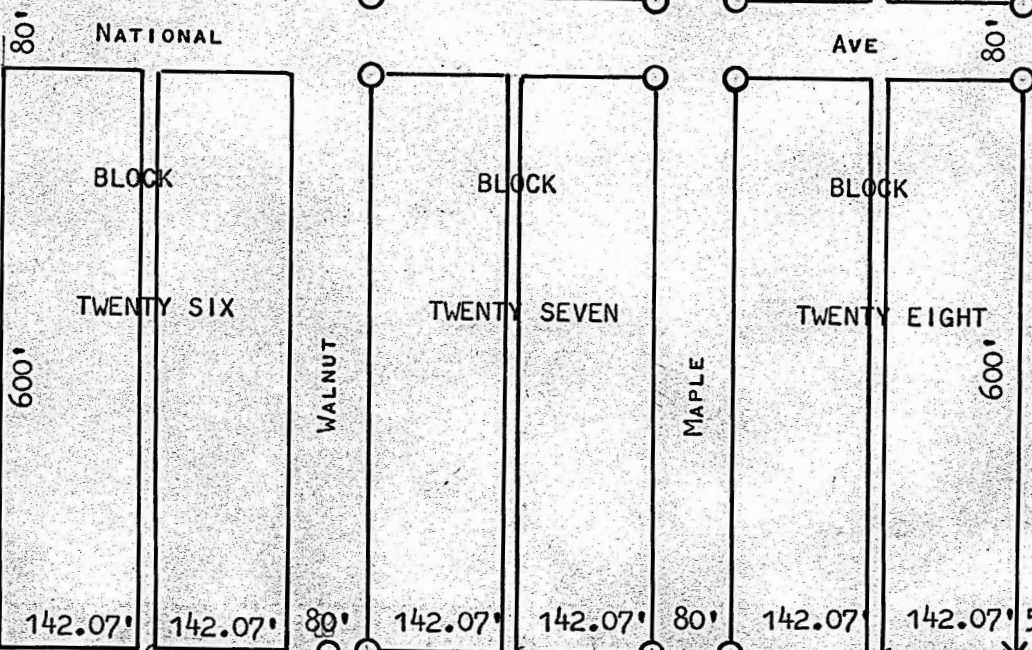
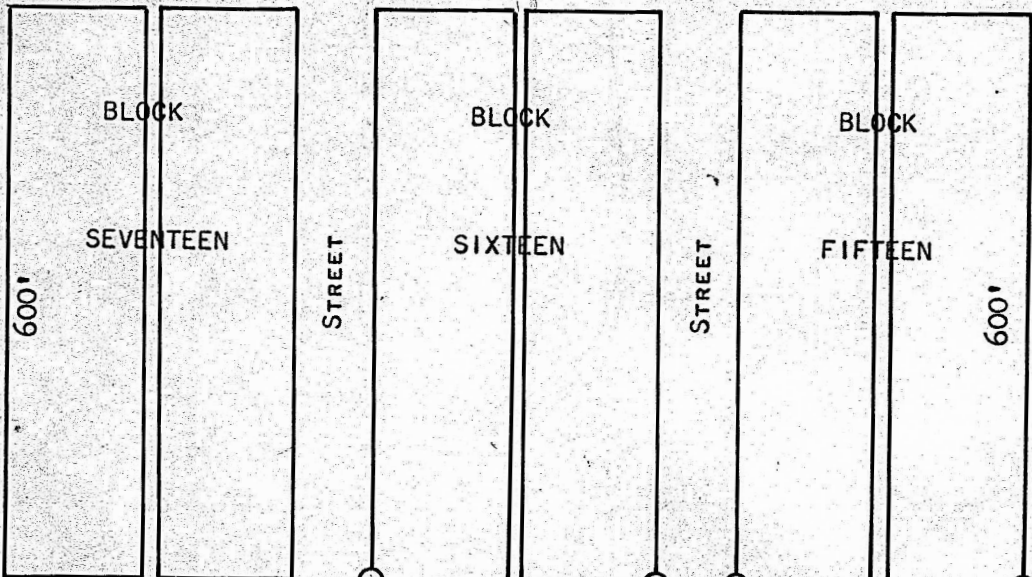
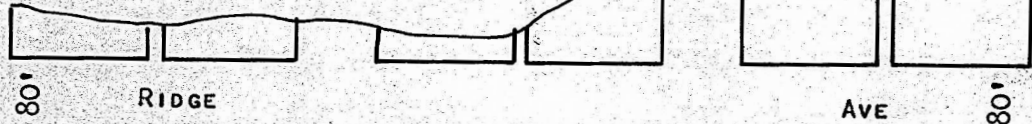
I, FRANCIS D. WAGNER, REGISTERED PROFESSIONAL  
ENGINEER, DO HEREBY CERTIFY THAT I DID ON THE 16TH  
DAY OF MAY, 1959 A SURVEY OF BLOCK, 27, 28 AND THE  
SOUTH LINE OF BLOCK 15 & 16 FAIRMOUNT ADDITION TO  
THE CITY OF McPHERSON, KANSAS, AND THAT THE  
ACCOMPANYING PLAT IS A TRUE EXHIBIT OF SAID SURVEY.

*Francis D. Wagner*

FRANCIS D. WAGNER  
REGISTERED PROFESSIONAL  
ENGINEER  
McPHERSON, KANSAS



● PIN IN PLACE  
○ 1" PINS PLACED THIS SURVEY



STREET

PENNSYLVANIA AVE

BLOCK  
FOURTEEN

BLOCK  
FIFTEEN

BLOCK  
TWENTY EIGHT

CENTER LINE PAVEMENT SECTION LINE

2630.75'

MICROFILM

1/4 SECTION LINE  
2633.07'

1/4 CORNER  
20 & 21-19-3  
NAIL & WASHER