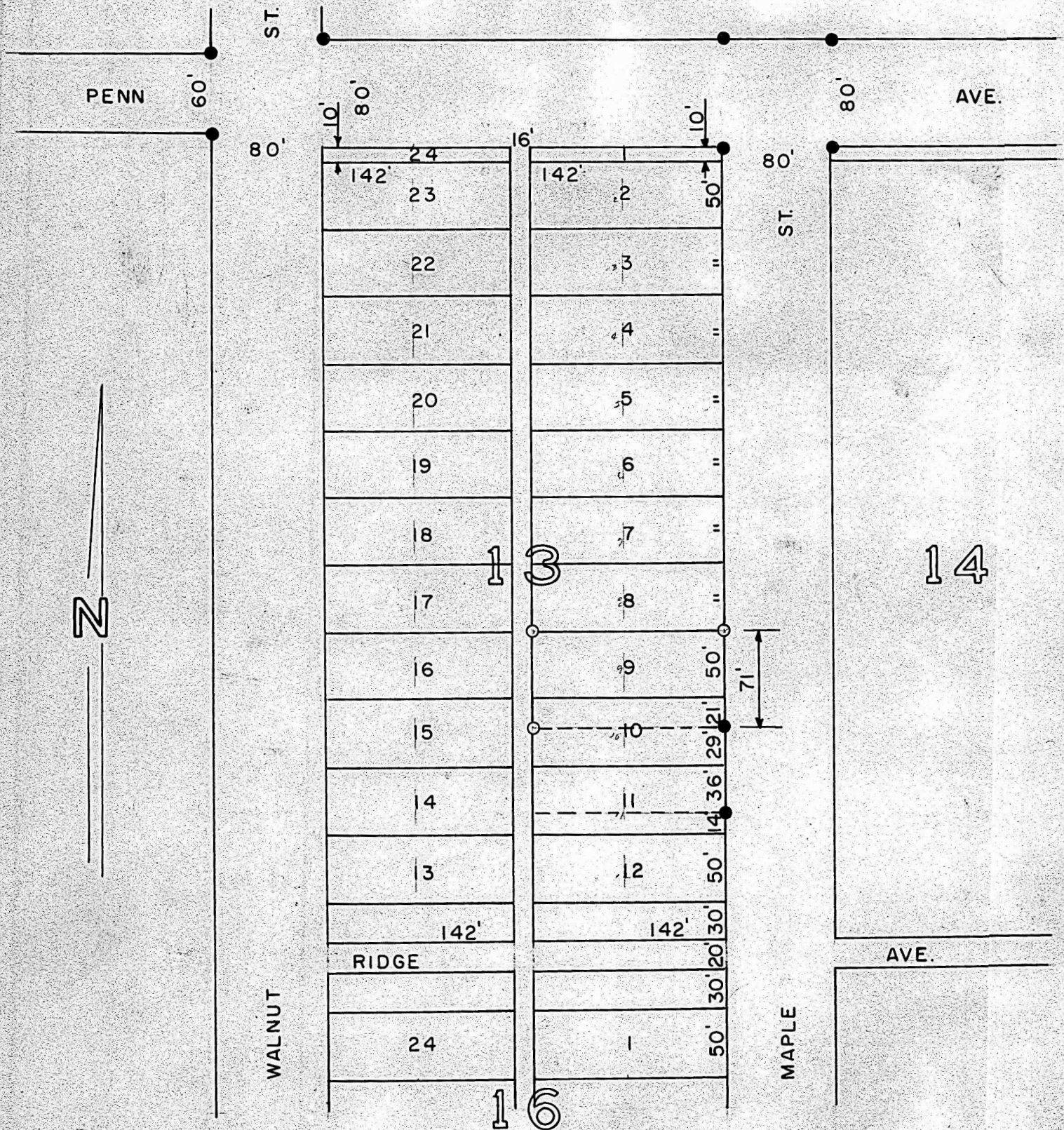


Survey of Lot 9 & North 21' of Lot 10  
Block 13 Fairmount Addition  
McPherson, Kansas



- Pins set previous survey
- Pins set this survey

State of Kansas )  
County of McPherson ) S.S.

I, Francis Rankin, County Engineer of McPherson, Kansas, do hereby certify that under my supervision a survey was made of lot 9 and the North 21' feet of Lot 10 Block 13 Fairmount Addition to the city of McPherson, Kansas, and the above plat is a true exhibit of said survey as far as it is known to me.

MICROFILM

Survey called for by Harry White

Signed this 14 day of September, 1967



Francis Rankin  
County Engineer  
McPherson, Kansas