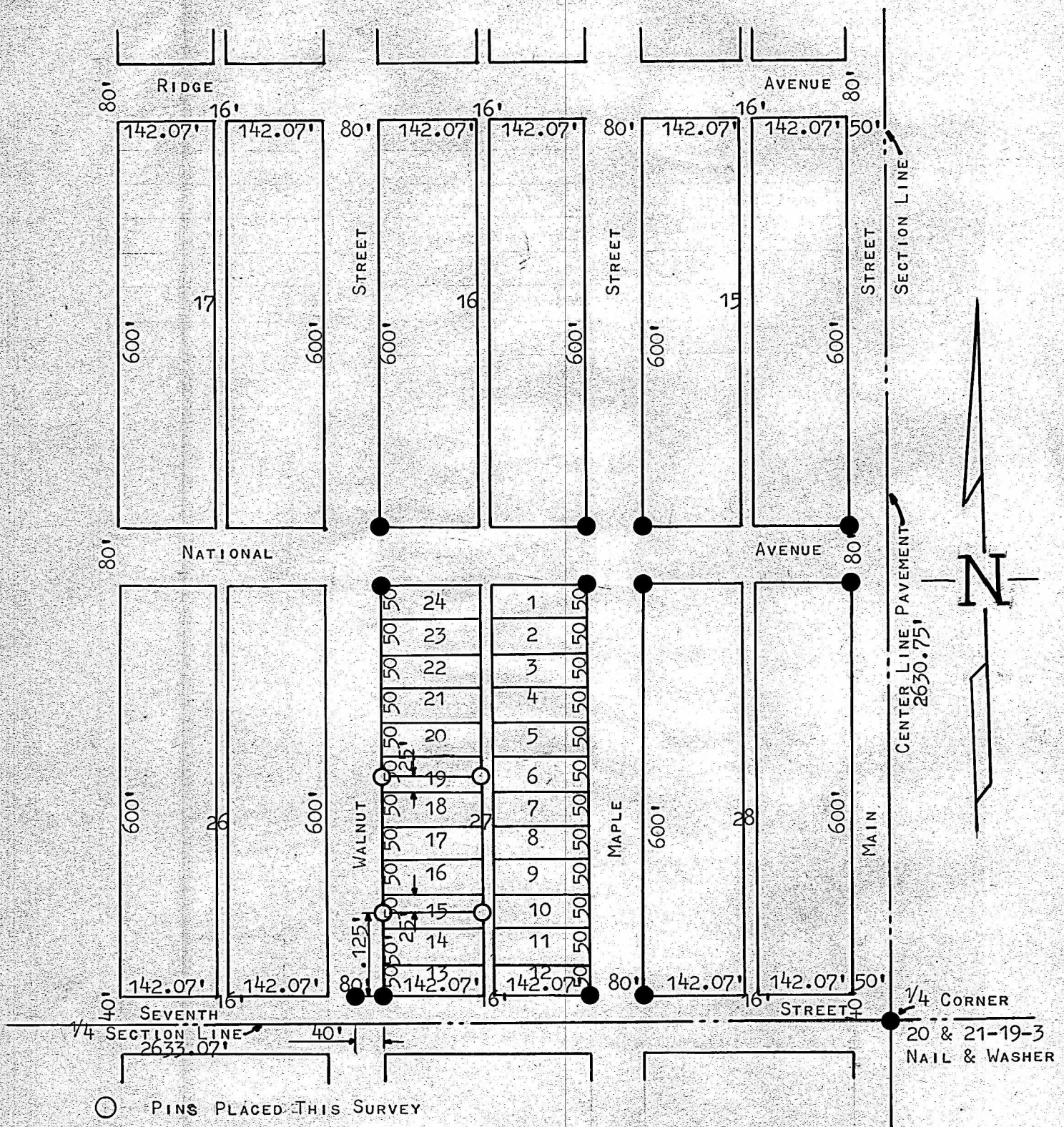


A SURVEY OF NORTH 1/2 LOT 15,
 LOT 16, 17, & 18 AND SOUTH 1/2
 LOT 19 OF BLOCK 27
 FAIRMOUNT ADDITION



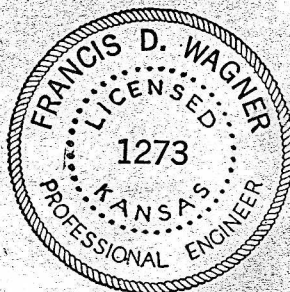
- PINS PLACED THIS SURVEY
- PINS IN PLACE

STATE OF KANSAS) SS
 COUNTY OF McPHERSON)

I, FRANCIS D. WAGNER, COUNTY ENGINEER OF McPHERSON COUNTY, KANSAS,
 DO HEREBY CERTIFY THAT I DID CAUSE TO BE DONE ON THE 29TH DAY OF
 MARCH, 1960 A SURVEY OF THE NORTH 1/2 LOT 15, ALL OF LOTS 16, 17 &
 18 AND THE SOUTH 1/2 OF LOT 19, OF BLOCK 27, FAIRMOUNT ADDITION, TO
 THE CITY OF McPHERSON, KANSAS, AND THAT THE ACCOMPANYING PLAT IS
 A TRUE EXHIBIT OF SAID SURVEY.

MICROFILM

MARCH 31, 1960



Francis D. Wagner

FRANCIS D. WAGNER
 COUNTY ENGINEER
 McPHERSON COUNTY, KANSAS