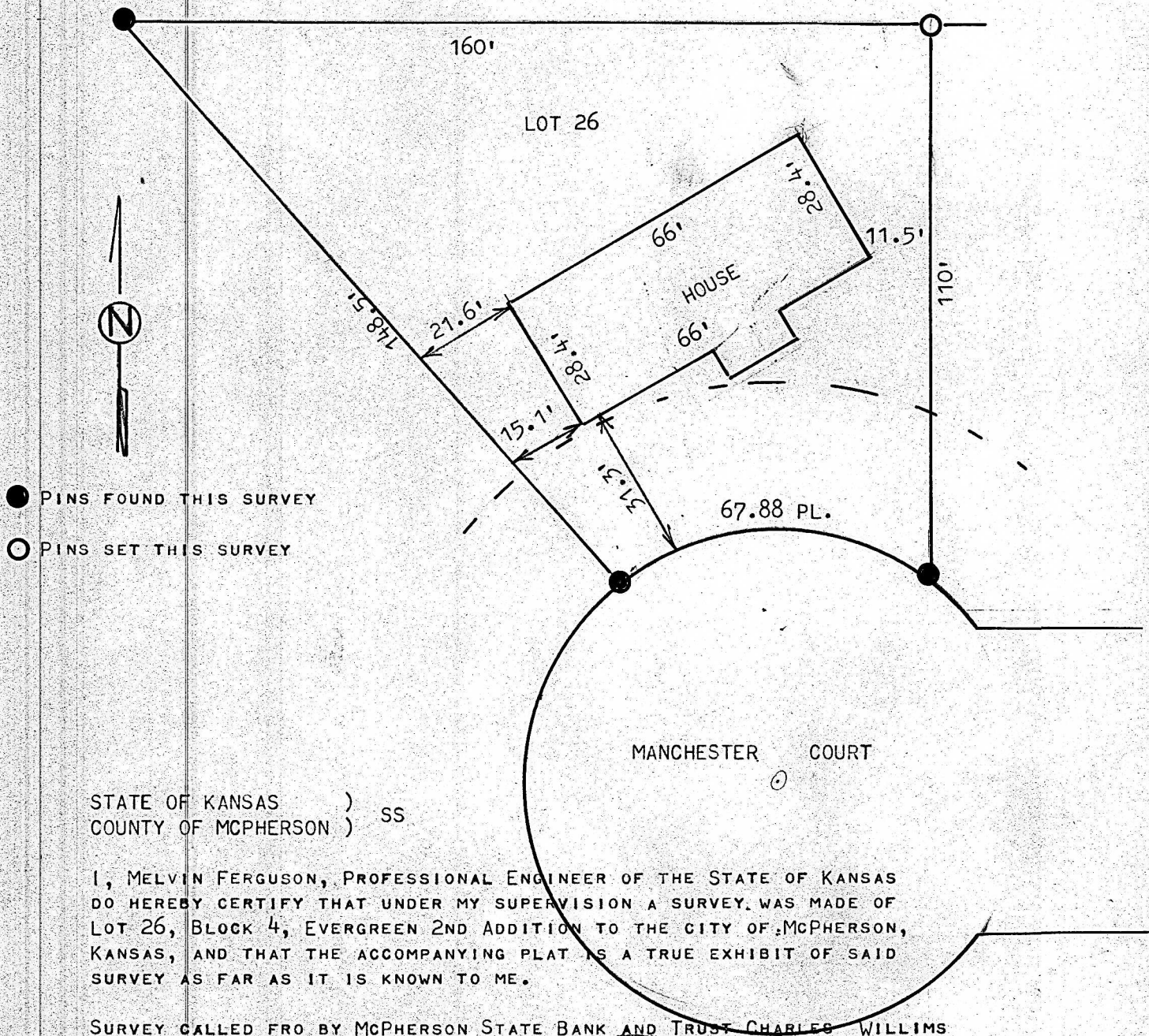


A SURVEY OF LOT 26 BLOCK 4, EVERGREEN 2ND. ADDITION
MCPHERSON, KANSAS



SURVEY CALLED FRO BY MCPHERSON STATE BANK AND TRUST CHARLES WILLIAMS

SIGNED THIS 31st DAY OF JULY, 1986

Melvin Ferguson
MELVIN FERGUSON
PROFESSIONAL ENGINEER
MCPHERSON, KANSAS

