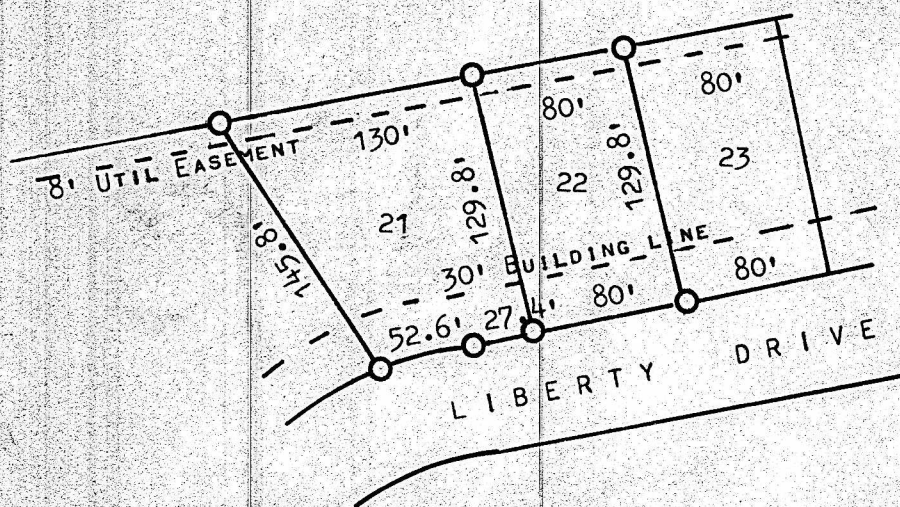


A SURVEY OF LOTS 21 AND 22, BLOCK 2  
EVERGREEN ADDITION, MCPHERSON, KANSAS



○ PINS FOUND THIS SURVEY

STATE OF KANSAS )  
COUNTY OF MCPHERSON ) SS

I, MELVIN FERGUSON, PROFESSIONAL ENGINEER OF THE STATE OF KANSAS DO  
HEREBY CERTIFY THAT UNDER MY SUPERVISION A SURVEY WAS MADE OF LOTS  
21 AND 22, BLOCK 2, EVERGREEN ADDITION TO THE CITY OF MCPHERSON, KANSAS  
AND THAT THE ACCOMPANYING PLAT IS A TRUE EXHIBIT OF SAID SURVEY AS FAR  
AS IT IS KNOWN TO ME.

SURVEY CALLED FOR BY TERRY ELDER

SIGNED THIS 10<sup>th</sup> DAY OF DECEMBER, 1976

MELVIN FERGUSON  
PROFESSIONAL ENGINEER  
MCPHERSON, KANSAS

