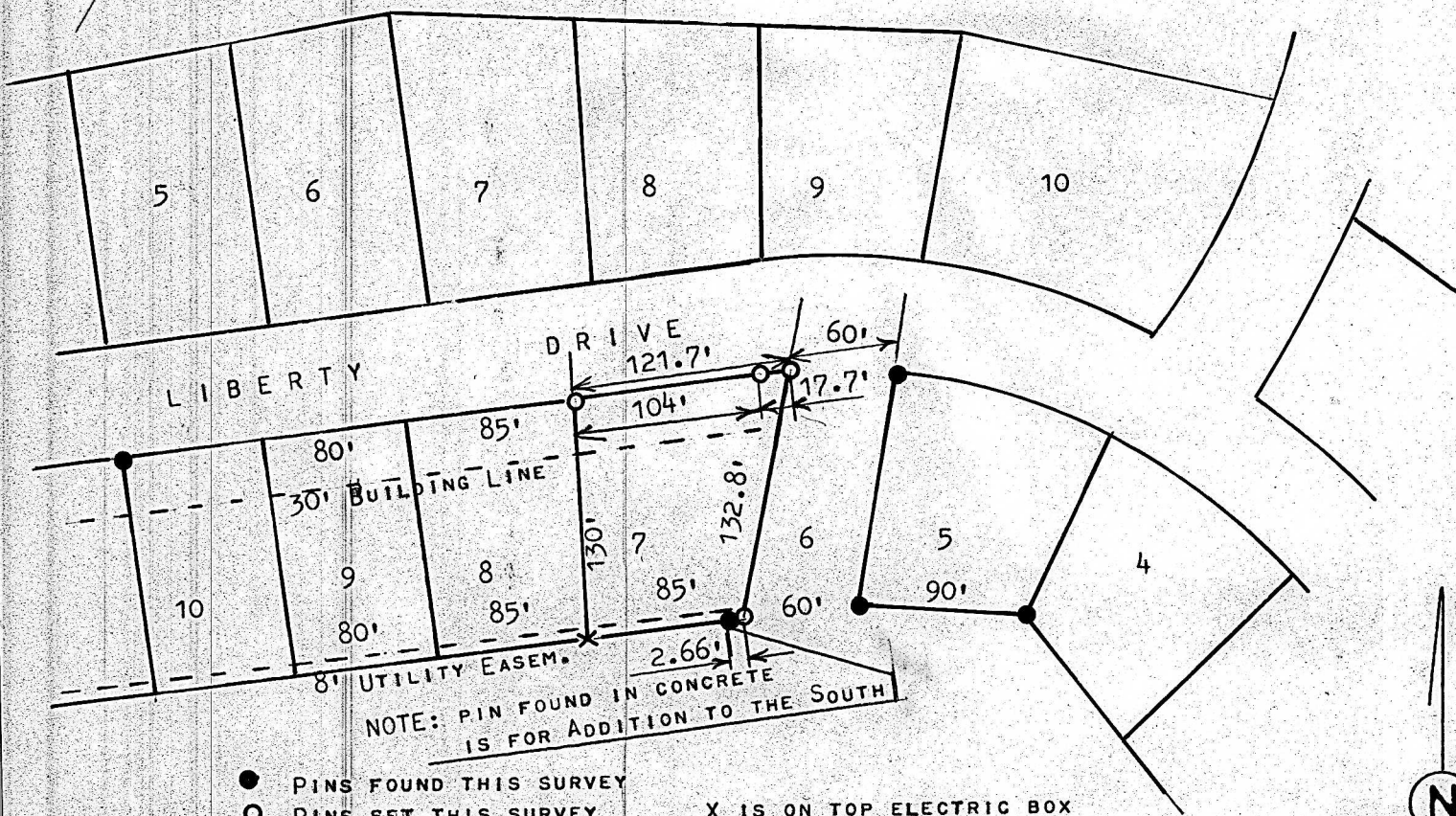


A SURVEY OF LOT 7, BLOCK 2  
EVERGREEN ADDITION, MCPHERSON



STATE OF KANSAS )  
COUNTY OF MCPHERSON ) SS

I, MELVIN FERGUSON, PROFESSIONAL ENGINEER OF THE STATE OF KANSAS DO HEREBY CERTIFY THAT UNDER MY SUPERVISION A SURVEY WAS MADE OF LOT 7, BLOCK 2, EVERGREEN ADDITION, TO THE CITY OF MCPHERSON, KANSAS, AND THAT THE ABOVE PLAT IS A TRUE EXHIBIT OF SAID SURVEY AS FAR AS IT IS KNOWN TO ME.

SURVEY CALLED FOR BY DAVID WARD

SIGNED THIS 5th DAY OF AUGUST, 1977

*Melvin Ferguson*  
MELVIN FERGUSON  
PROFESSIONAL ENGINEER  
MCPHERSON, KANSAS

MELVIN V. FERGUSON  
LICENSED  
6772  
KANSAS  
PROFESSIONAL ENGINEER

