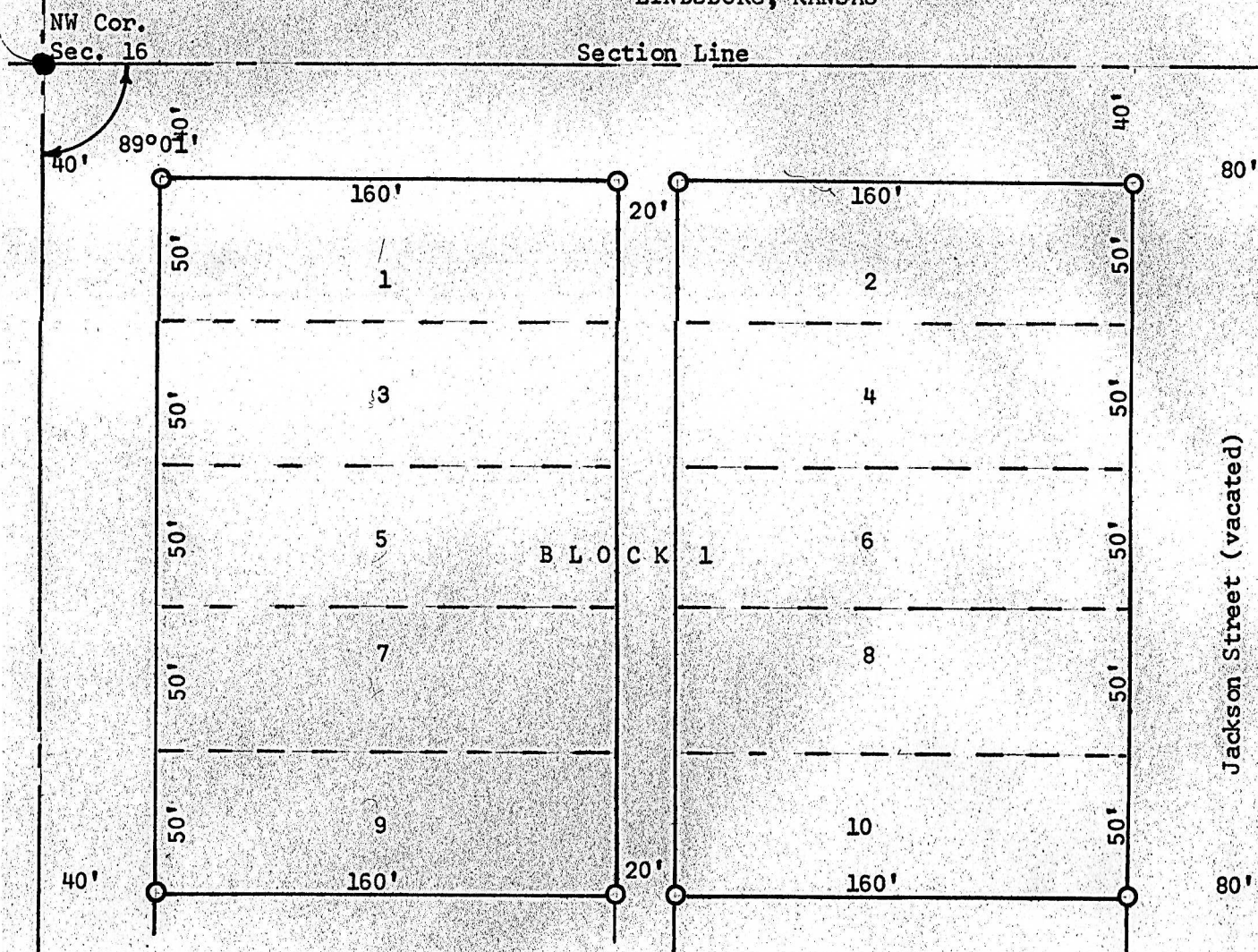


A SURVEY OF LOTS 1 THRU 10 INCL.  
BLOCK 1, EBERHARDT ADDITION  
LINDSBORG, KANSAS



- Pins Found this Survey
- Pins Found this Survey

State of Kansas )  
County of McPherson) SS

I, F. R. Rankin, County Engineer of McPherson County, Kansas, do hereby certify that under my supervision a survey was made of Lots 1 through 10 Incl., Block 1, Eberhardt Addition, to the City of Lindsborg, Kansas and that the above plat is a true exhibit of said survey as far as it is known to me.

Survey called for by Smoky Valley Develop. Inc.

Signed this 10 day of October, 1970

*F. R. Rankin*

F. R. Rankin  
County Engineer  
McPherson, Kansas

