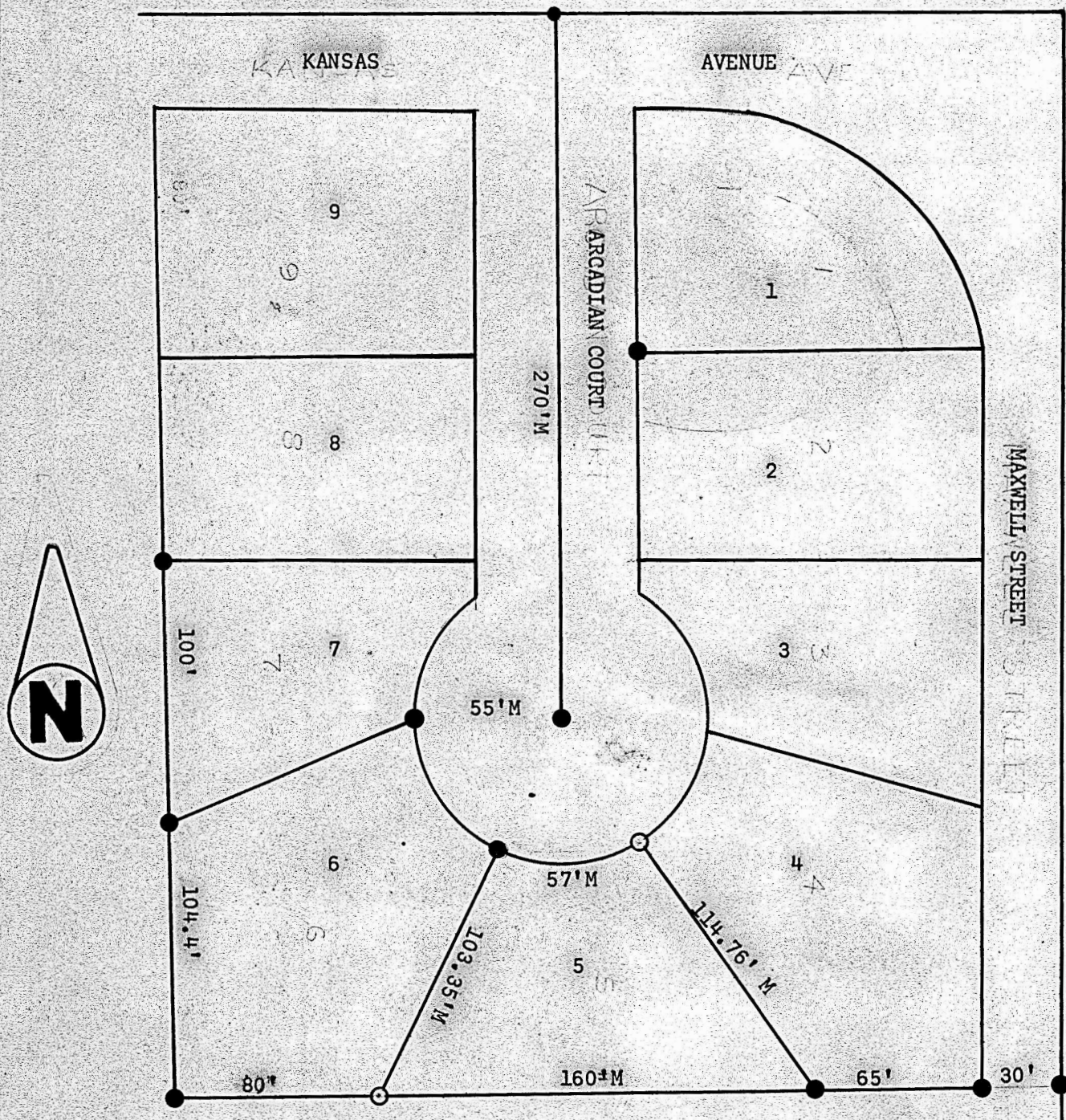


A SURVEY OF LOT 5 BLOCK 1  
EASTMOOR ADDITION TO THE  
CITY OF MCPHERSON, KANSAS



- Nail Found This Survey
- Pins Found This Survey
- Pins Set This Survey

State of Kansas ) SS  
County of McPherson)

I, Francis Rankin, County Engineer of McPherson County, Kansas, do hereby certify that I did cause to be done on the 12th day of June, 1963, a survey of Lot 5 Block 1 of Eastmoor Addition to the City of McPherson, Kansas, and that the accompanying plat is a true exhibit of said survey as far as it is known to me.

Survey called for by

Signed this 13 day of June 1963

*Francis Rankin*  
Francis Rankin  
County Engineer  
McPherson County



MICROFILM