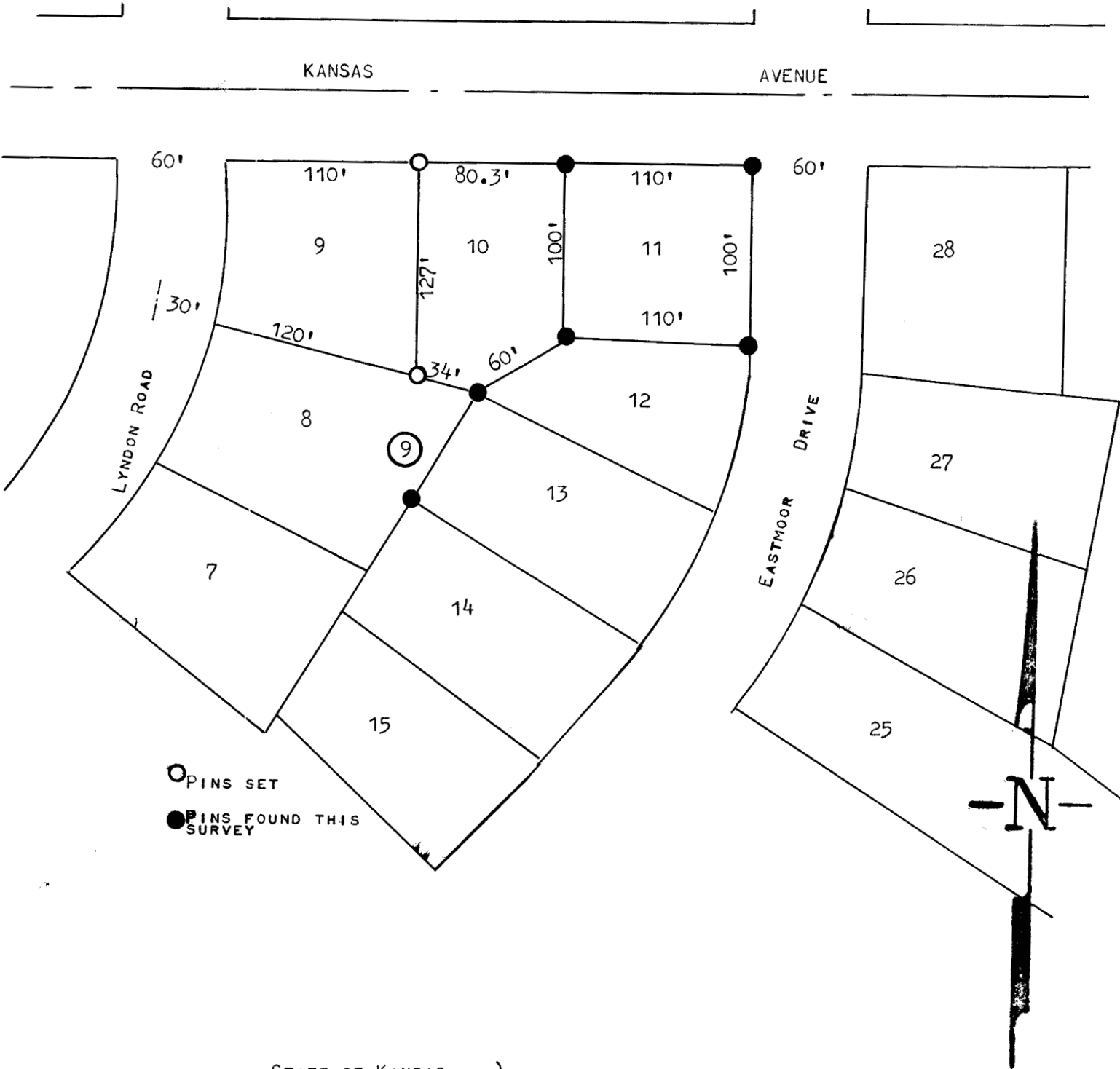


A SURVEY OF LOT 10 BLOCK 9  
EASTMOOR ADDITION



STATE OF KANSAS )  
McPHERSON, COUNTY )SS

I, FRANCIS R. RANKIN, PROFESSIONAL ENGINEER OF THE STATE OF KANSAS, DO HEREBY CERTIFY THAT THE ABOVE SURVEY WAS MADE UNDER MY SUPERVISION, OF LOT 10 BLOCK 9 EASTMOOR ADDITION TO THE CITY OF MCPHERSON, KANSAS, AND THAT THE ABOVE PLAT IS A TRUE AND CORRECT SO FAR AS IT IS KNOWN TO ME.

SURVEY CALLED FOR BY BOB SIGSON

MICROFILM

SIGNED THIS 1 DAY OF May 1963



FRANCIS RANKIN  
PROFESSIONAL ENGINEER  
MCPHERSON, KANSAS

*Francis Rankin*