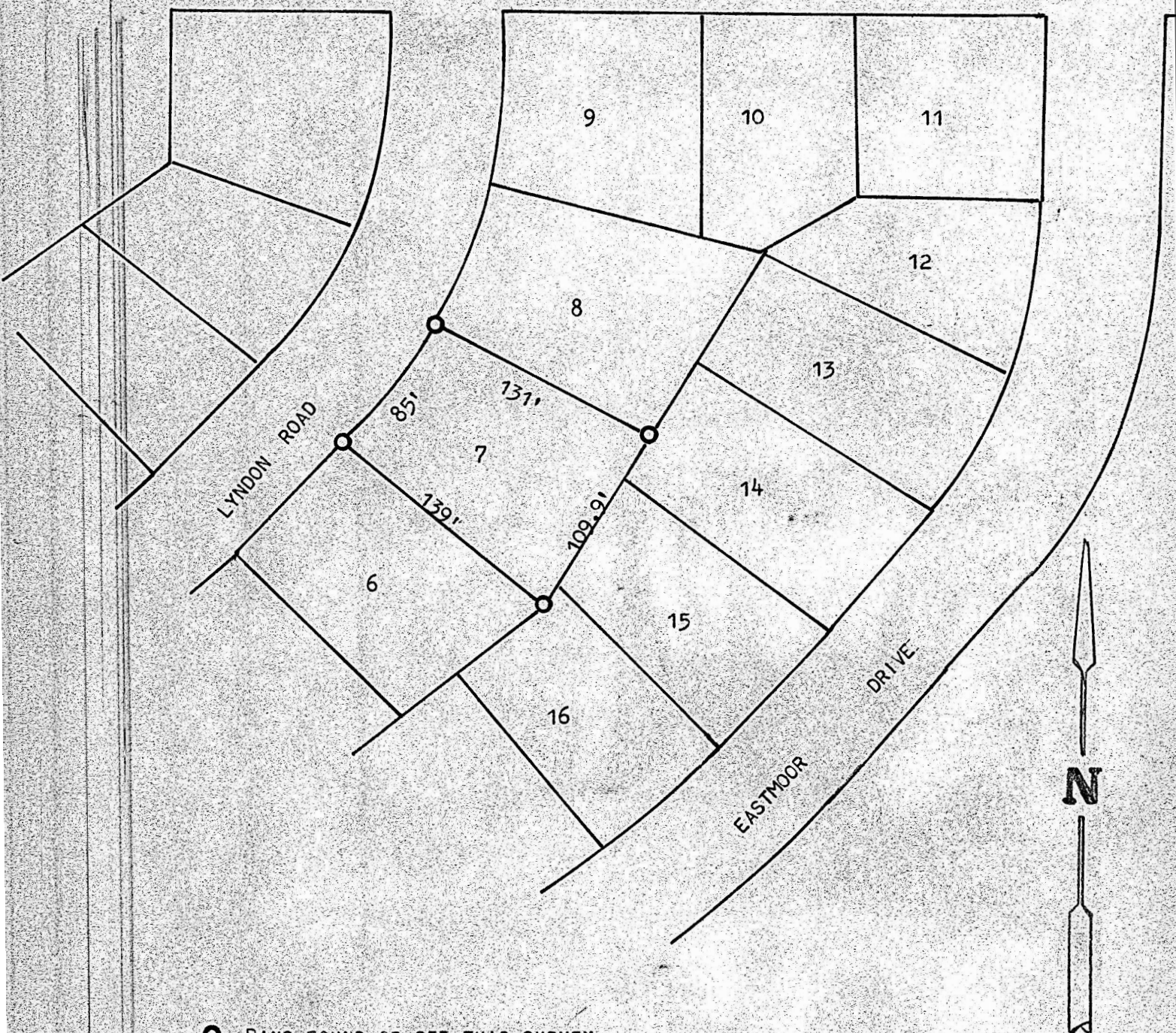


A SURVEY OF LOT 7, BLOCK 9

EASTMOOR ADDITION

MCPHERSON, KANSAS



○ PINS FOUND OR SET THIS SURVEY

STATE OF KANSAS)
COUNTY OF MCPHERSON) SS

I, FRANCIS R. RANKIN, COUNTY ENGINEER OF MCPHERSON COUNTY, KANSAS,
DO HEREBY CERTIFY THAT UNDER MY SUPERVISION A SURVEY WAS MADE OF LOT 7,
BLOCK 9, EASTMOOR ADDITION TO THE CITY OF MCPHERSON, KANSAS, AND THE
ABOVE PLAT IS A TRUE EXHIBIT OF SAID SURVEY AS FAR AS IT IS KNOWN TO ME.

SURVEY CALLED FOR BY CAROL WARE.

SIGNED THIS 11th DAY OF AUGUST, 1971.

Francis R. Rankin
FRANCIS R. RANKIN

COUNTY ENGINEER
MCPHERSON COUNTY, KANSAS



MICROFILM