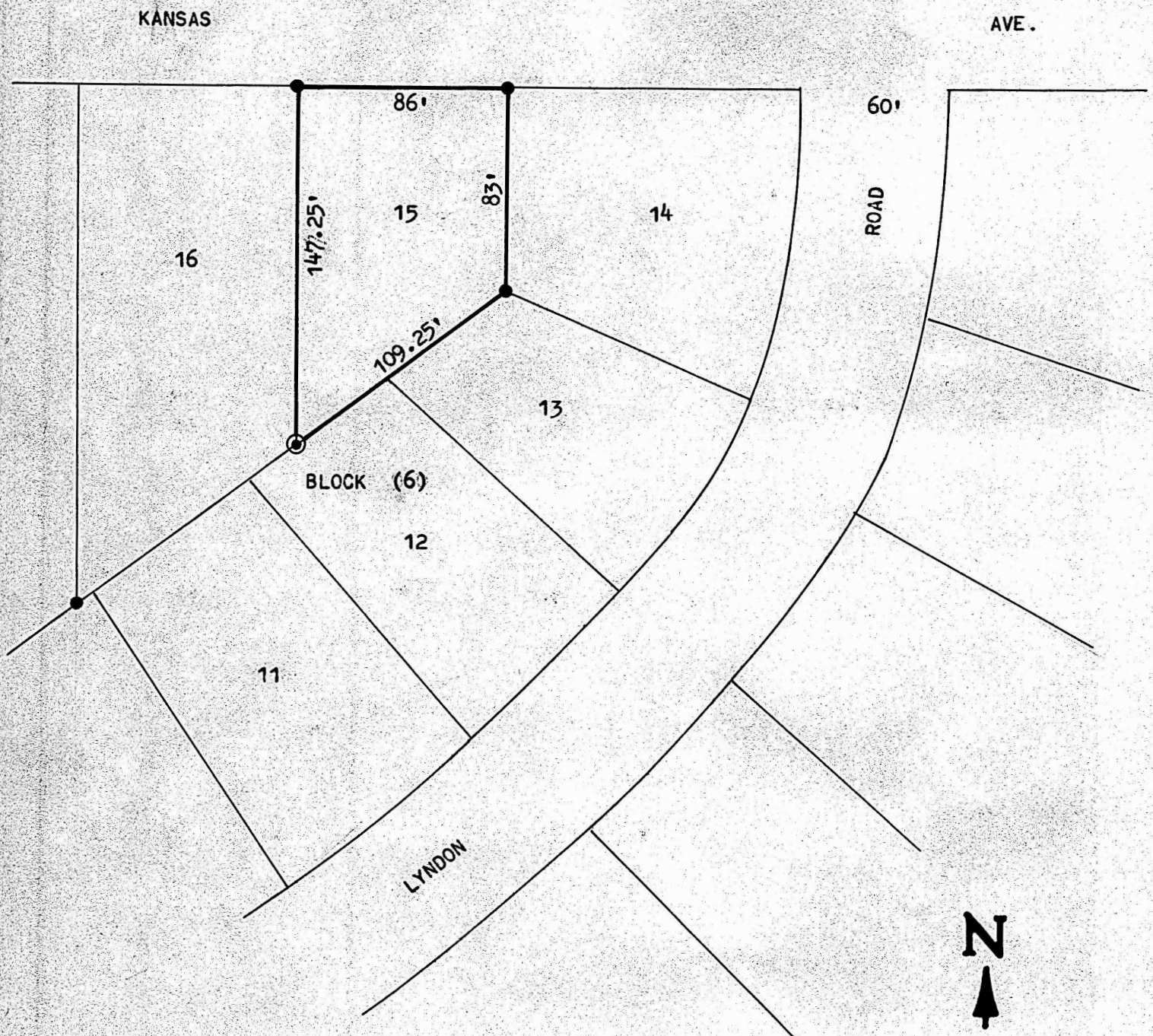


A SURVEY OF LOT 15 IN BLOCK 6 (SIX)
EASTMOOR ADDITION IN THE CITY OF
McPHERSON, KANSAS



- PINS FOUND
- ⊙ PIN SET

STATE OF KANSAS)
COUNTY OF McPHERSON) ss

I, MELVIN FERGUSON, COUNTY ENGINEER OF McPHERSON COUNTY, KANSAS,
DO HEREBY CERTIFY THAT UNDER MY SUPERVISION A SURVEY WAS MADE OF
LOT 15, BLOCK 6, EASTMOOR ADDITION TO THE CITY OF McPHERSON, KANSAS,
AND THE ABOVE PLAT IS A TRUE EXHIBIT OF SAID SURVEY AS FAR AS FAR AS
IT IS KNOWN TO ME.

SURVEY CALLED FOR BY HARLAN DOERING.

SIGNED ON THIS 6th DAY OF SEPTEMBER, 1974.

Melvin Ferguson
MELVIN FERGUSON
COUNTY ENGINEER
McPHERSON Co., KANSAS



MICROFILM