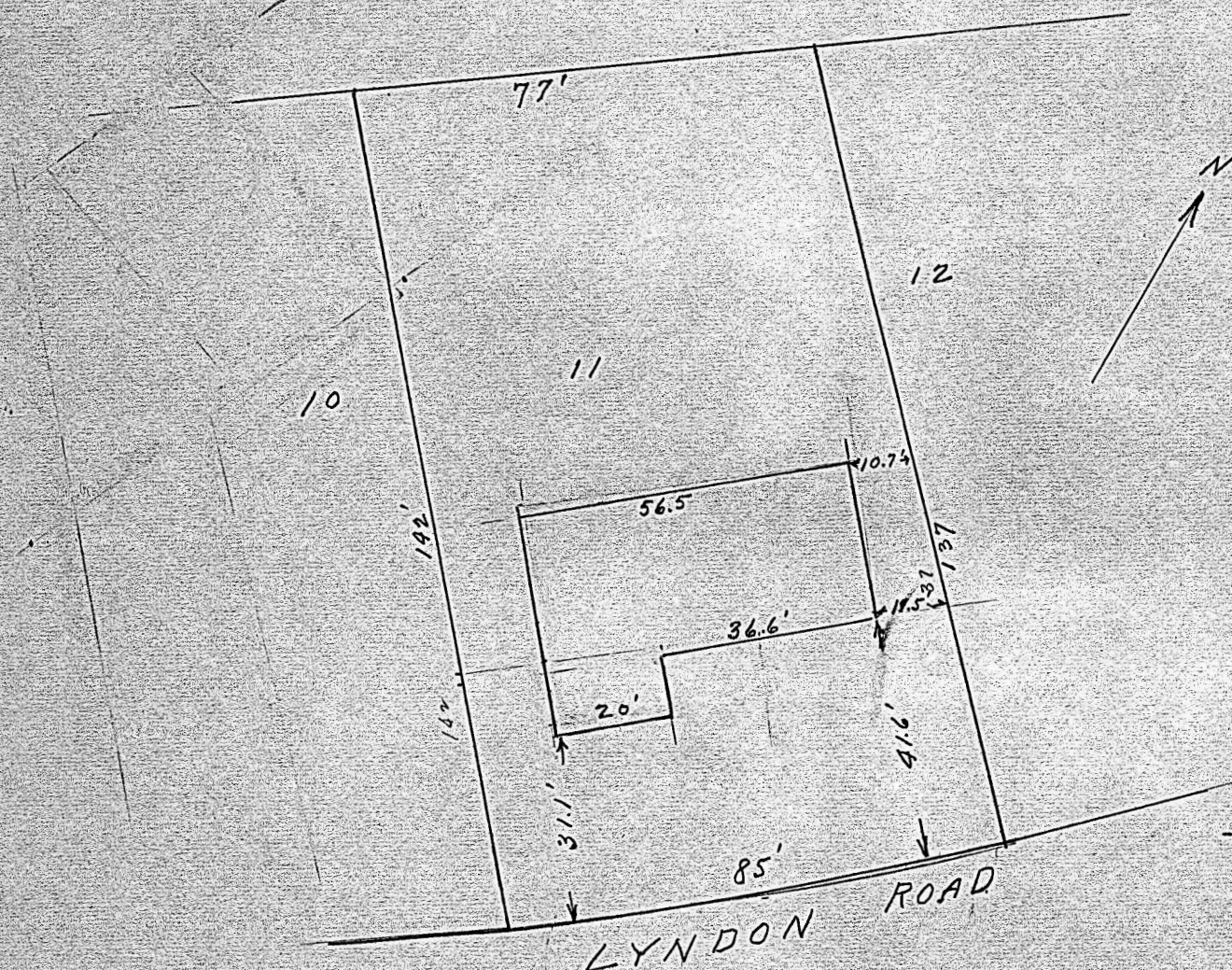


11-6

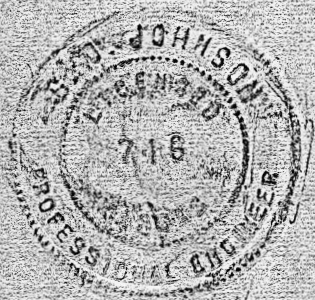
Lot 11, Block 6, Eastmoor addition, McPherson, Kansas.



State of Kansas, County of McPherson, SS.

I, G.D. Johnson, Licensed Civil Engineer of the State of Kansas, do hereby certify that I did on the 24th. day of February, 1959 survey Lot 11, Block 6, Eastmoor Addition, to the City of McPherson, Kansas and on the 31st day of March determine location of improvements on said lot.

I also certify that accompanying plat is a true exhibit of said survey.



*G.D. Johnson*

MICROFILM

2-24