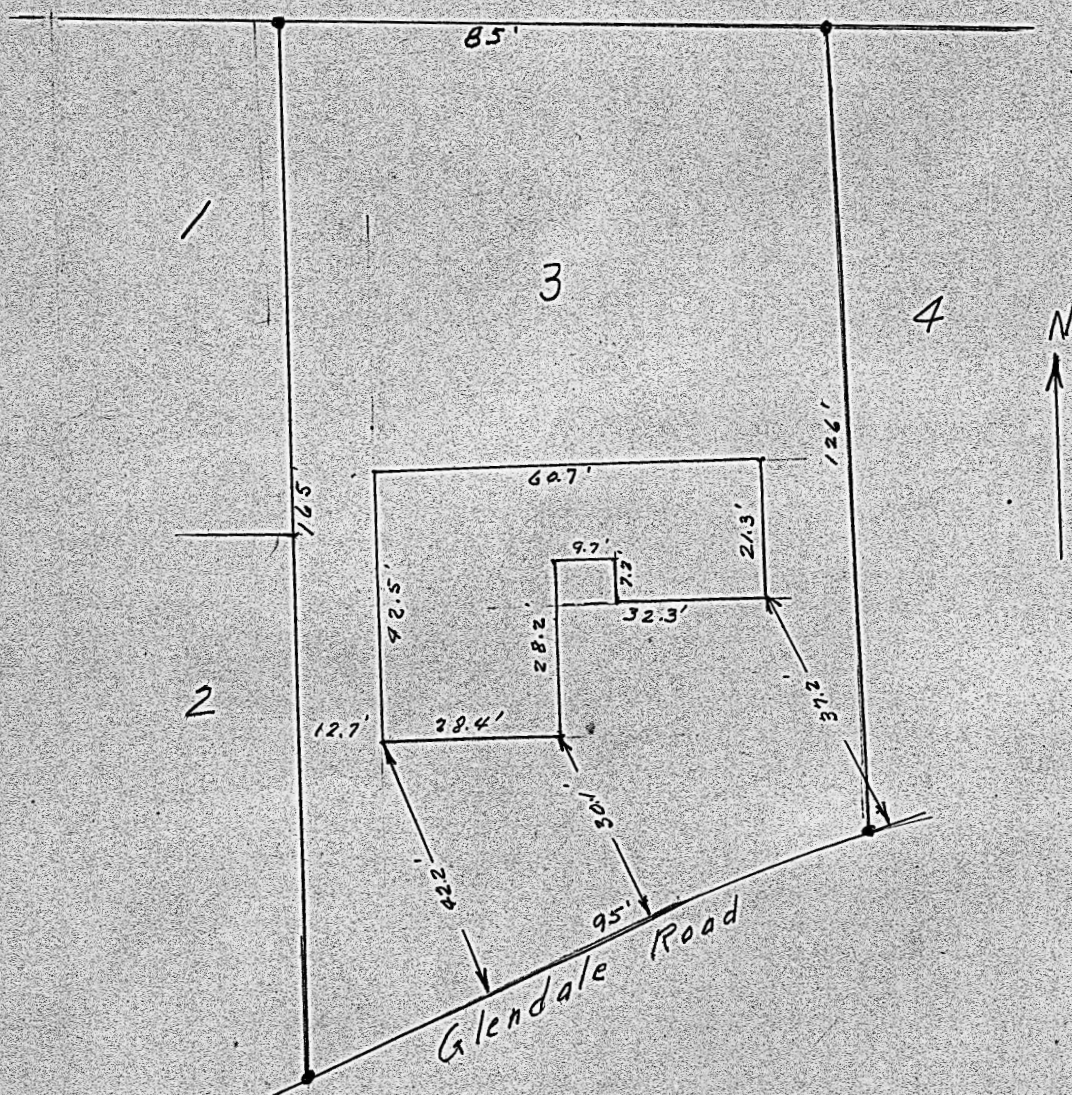


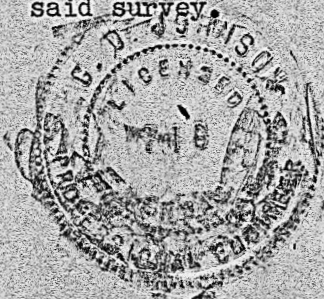
Lot 3, Block 6, Eastmoor Addition, McPherson, Kansas.



State of Kansas, County of McPherson, SS.

I, G.D. Johnson, Licensed Civil Engineer of the State of Kansas, do hereby certify that I did on the 16th. day of February, 1959 survey Lot 3, Block 6, Eastmoor Addition to the City of McPherson, Kansas and on the 31st day of March, 1959 determine location of improvements on said lot.

I also certify that accompanying plat is a true exhibit of said survey.



*G.D. Johnson*