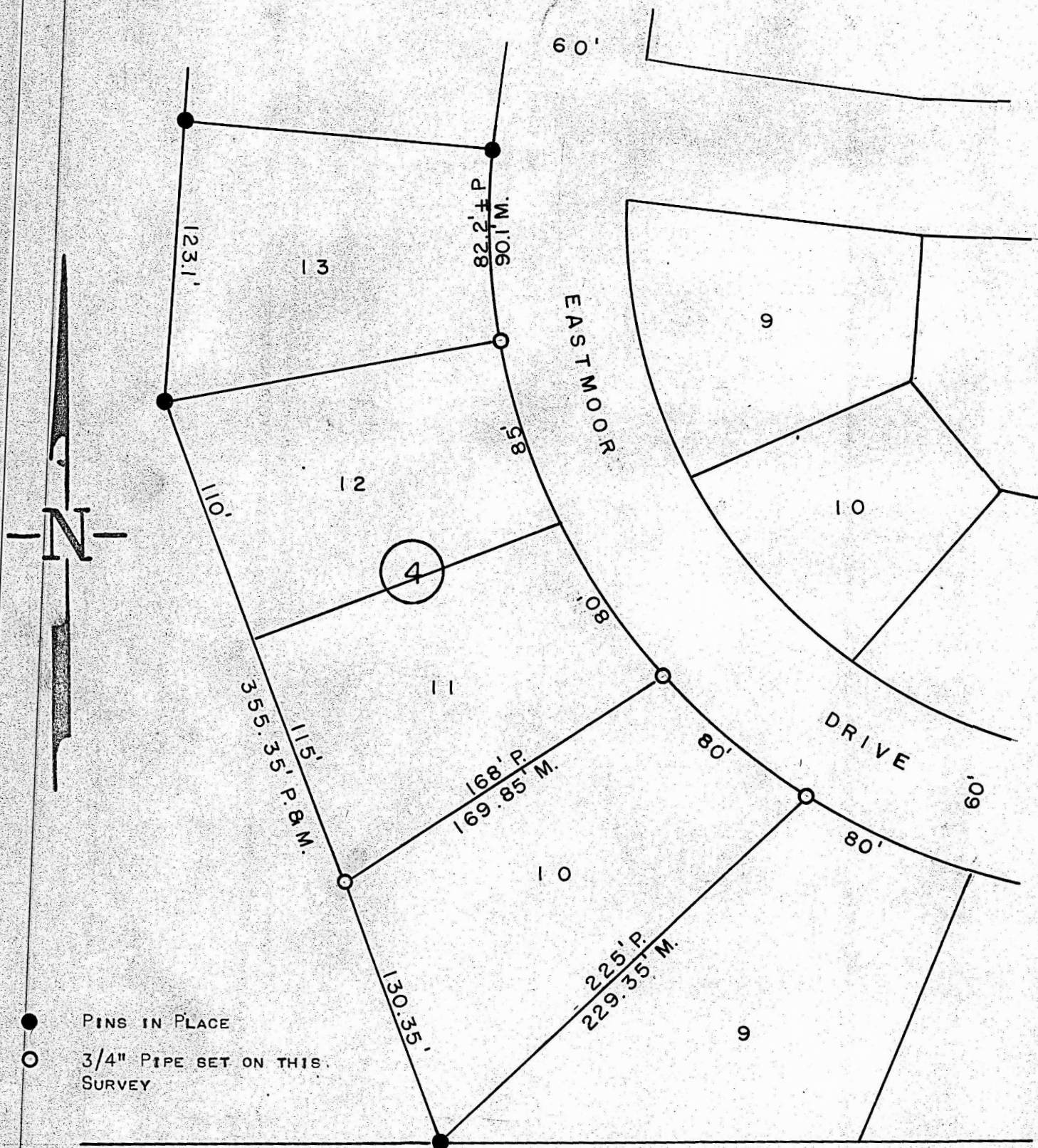


A SURVEY OF LOT 10 BLOCK 4 EASTMOOR



● PINS IN PLACE  
○ 3/4" PIPE SET ON THIS SURVEY

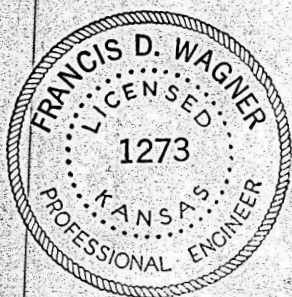
STATE OF KANSAS ) SS  
COUNTY OF McPHERSON)

I, FRANCIS D. WAGNER, COUNTY ENGINEER OF McPHERSON COUNTY, KANSAS DO HEREBY CERTIFY THAT I DID CAUSE TO BE DONE ON THE 4TH DAY OF SEPTEMBER 1956 A SURVEY OF LOT 10 BLOCK 4 EASTMOOR ADDITION TO THE CITY OF McPHERSON, KANSAS, AND THAT THE ACCOMPANYING PLAT IS A TRUE EXHIBIT OF SAID SURVEY.

SEPTEMBER 5, 1956

*Francis D. Wagner*

FRANCIS D. WAGNER  
COUNTY ENGINEER  
McPHERSON, KANSAS



MICROFILM