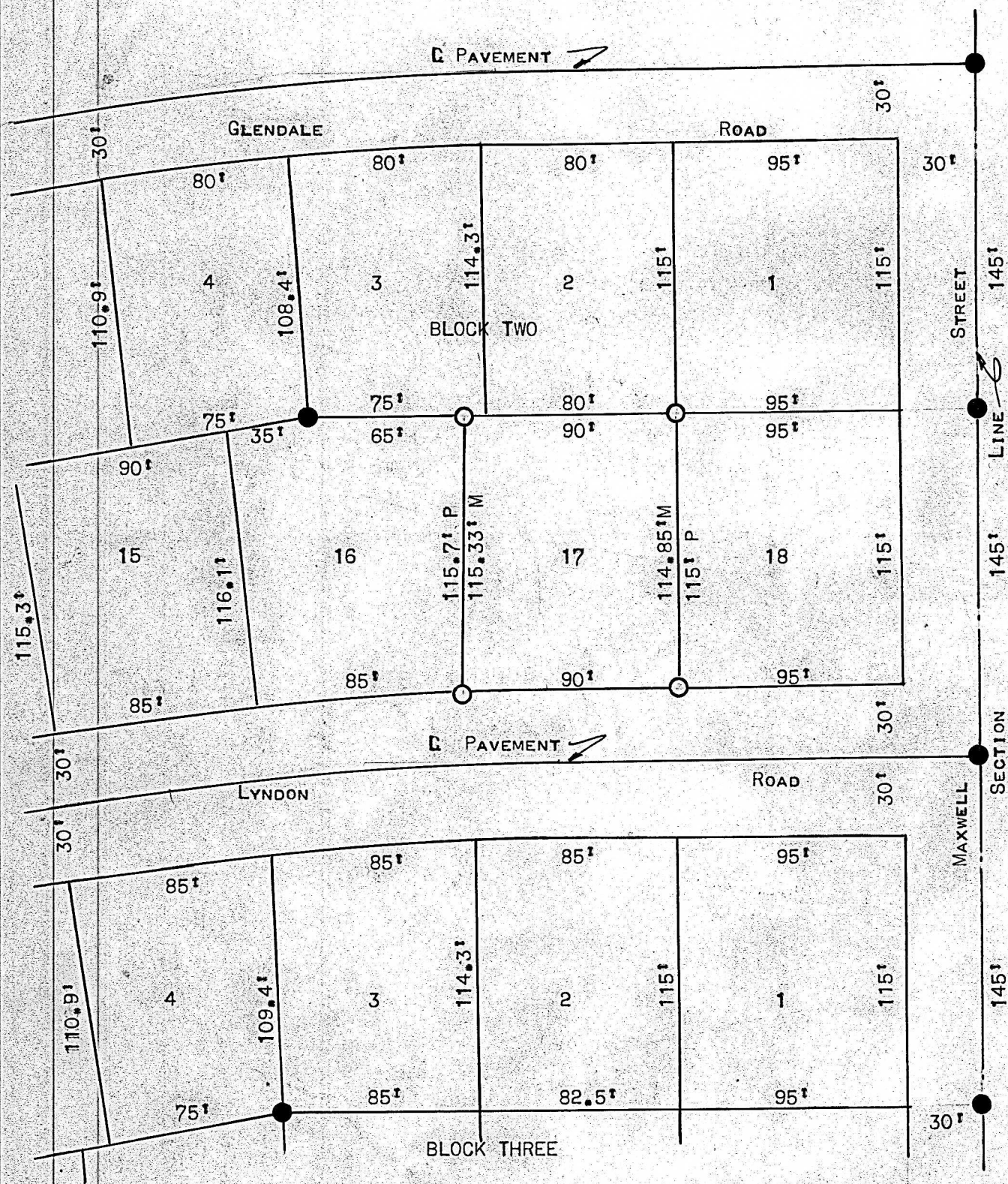


A SURVEY OF LOT 17 BLOCK TWO EASTMOOR ADDITION  
MCPHERSON, KANSAS



● PINS ON PREVIOUS SURVEY

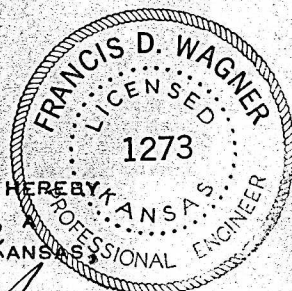
○ PINS SET ON THIS SURVEY

STATE OF KANSAS )  
COUNTY OF MCPHERSON ) SS

I, FRANCIS D. WAGNER, COUNTY ENGINEER OF MCPHERSON COUNTY KANSAS, DO HEREBY CERTIFY THAT I DID CAUSE TO BE DONE ON THE 19TH DAY OF OCTOBER, 1956, A SURVEY OF LOT 17 BLOCK 2 EASTMOOR ADDITION TO THE CITY OF MCPHERSON, KANSAS, AND THAT THE ACCOMPANYING PLAT IS A TRUE EXHIBIT OF SAID SURVEY.

*Francis D. Wagner*  
FRANCIS D. WAGNER  
COUNTY ENGINEER

OCTOBER 20, 1956



MICROFILM

6