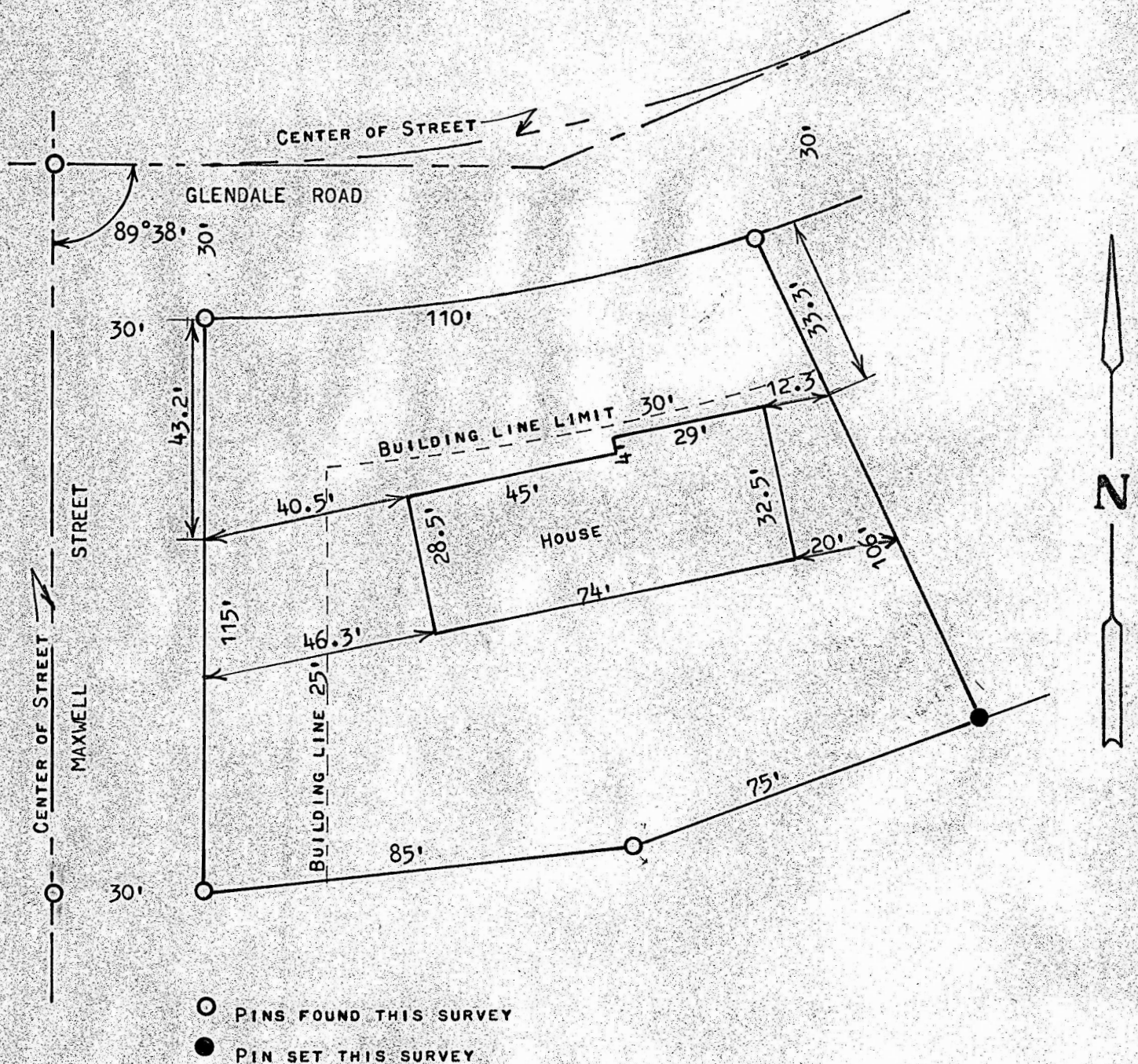


A SURVEY OF LOT 1, BLOCK 7
EASTMOOR ADDITION TO THE
CITY OF MCPHERSON, KANSAS



STATE OF KANSAS)
COUNTY OF MCPHERSON) SS

I, FRANCIS RANKIN, COUNTY ENGINEER OF MCPHERSON COUNTY, KANSAS,
DO HEREBY CERTIFY THAT UNDER MY SUPERVISION A SURVEY WAS MADE OF
LOT 1, BLOCK 7, EASTMOOR ADDITION TO THE CITY OF MCPHERSON, KANSAS
AND THE ABOVE PLAT IS A TRUE EXHIBIT OF SAID SURVEY AS FAR AS IT
IS KNOWN TO ME.

SURVEY CALLED FOR BY LEONARD LOWE

SIGNED THIS 18 DAY OF NOVEMBER, 1972

FRANCIS RANKIN
COUNTY ENGINEER
MCPHERSON, KANSAS

