

TION

PROFESSIONAL ENGINEER OF THE STATE OF KANSAS,  
CAUSED A SURVEY TO BE MADE UNDER MY SUPERVISION,  
AS FOLLOWS: A TRACT OF LAND LOCATED IN PART  
ER, SECTION TWENTY-SEVEN (27), TOWNSHIP NINE-  
WEST OF THE 6TH P.M., BEGINNING AT A POINT  
T CORNER OF THE NORTHEAST QUARTER OF SECTION  
1, SECTION LINE 759.67 FEET, THENCE WEST ON AN  
10 MINUTES A DISTANCE OF 807.9 FEET, THENCE SOUTH-  
45 DEGREES AND 22 MINUTES AN. 20 SECONDS A  
NUTHEASTERLY ON AN INTERIOR ANGLE OF 101 DEGREES  
4 FEET, THENCE ON AN INTERIOR ANGLE OF 117  
OF 56.24 FEET, THENCE EASTERLY ON AN INTERIOR  
DISTANCE OF 28 FEET MORE OR LESS TO THE ONE  
M ON THE SIXTY-SEVENTH LINE A DISTANCE OF 251.06  
LINE, THENCE EASTERLY ON RIGHT-OF-WAY LINE  
SOUTH 138.77 FEET TO 1/4 SECTION LINE, THENCE  
73 FEET, THENCE NORTH 258.68 FEET TO SOUTH LINE OF  
RLY AT A DEFLECTION ANGLE OF 84 DEGREES AND  
A DISTANCE OF 211.1 FEET TO THE PLACE OF  
9 ACRES MORE OR LESS, AS SHOWN BY THE PLAT  
OF SAID SURVEY AND SUBDIVISION. ALL CORNERS  
D WITH STEEL PINS.

MPHERSON, MCPHERSON COUNTY, KANSAS

GH, 1970.

A KANSAS CORPORATION  
AT SHEETS-ADAMS, INC., OWNER AND  
RIBED IN THE CERTIFICATE OF SURVEYOR,  
SURVEYED INTO LOTS AND BLOCKS, AND  
ON TO THE CITY OF MCPHERSON, KANSAS,  
DIVIDED INTO LOTS, STREETS, AND PUBLIC  
PLAT, AND FURTHER THAT ALL STREETS,  
USE OF THE PUBLIC.

ch 18 th, 1970.

SHEETS-ADAMS, INC.  
*William J. Sheets*  
PRESIDENT  
*Bill C. Adams*  
SECRETARY

DAY OF March, 1970 BEFORE ME THE  
COMMISSIONED IN AND FOR THE COUNTY AND STATE  
PRESIDENT OF SHEETS-ADAMS INC., A CORPORATION  
ALLY KNOWN TO ME TO BE THE SAME PERSON WHO  
AND WHO JULY ACKNOWLEDGES THE EXECUTION OF THE SAME.

TO SET MY OFFICIAL SIGNATURE AND AFFIXED MY  
ST ABOVE WRITTEN.

*B. J. Hagstrom*  
NOTARY PUBLIC

8 th, 1973.

AT WAS SUBMITTED TO ME AND THAT THE SAME IS  
MARCH, 1970.

*[Signature]*  
GENERAL MANAGER OF UTILITIES  
CITY OF MCPHERSON, KANSAS

AT WAS SUBMITTED TO ME AND THAT THE SAME IS  
March, 1970.

*Charles O. Stacy*  
CITY ENGINEER  
CITY OF MCPHERSON, KANSAS

AT WAS SUBMITTED TO ME AND THAT THE SAME IS  
March, 1970.

*Robert F. Stover*  
CITY ATTORNEY  
CITY OF MCPHERSON, KANSAS

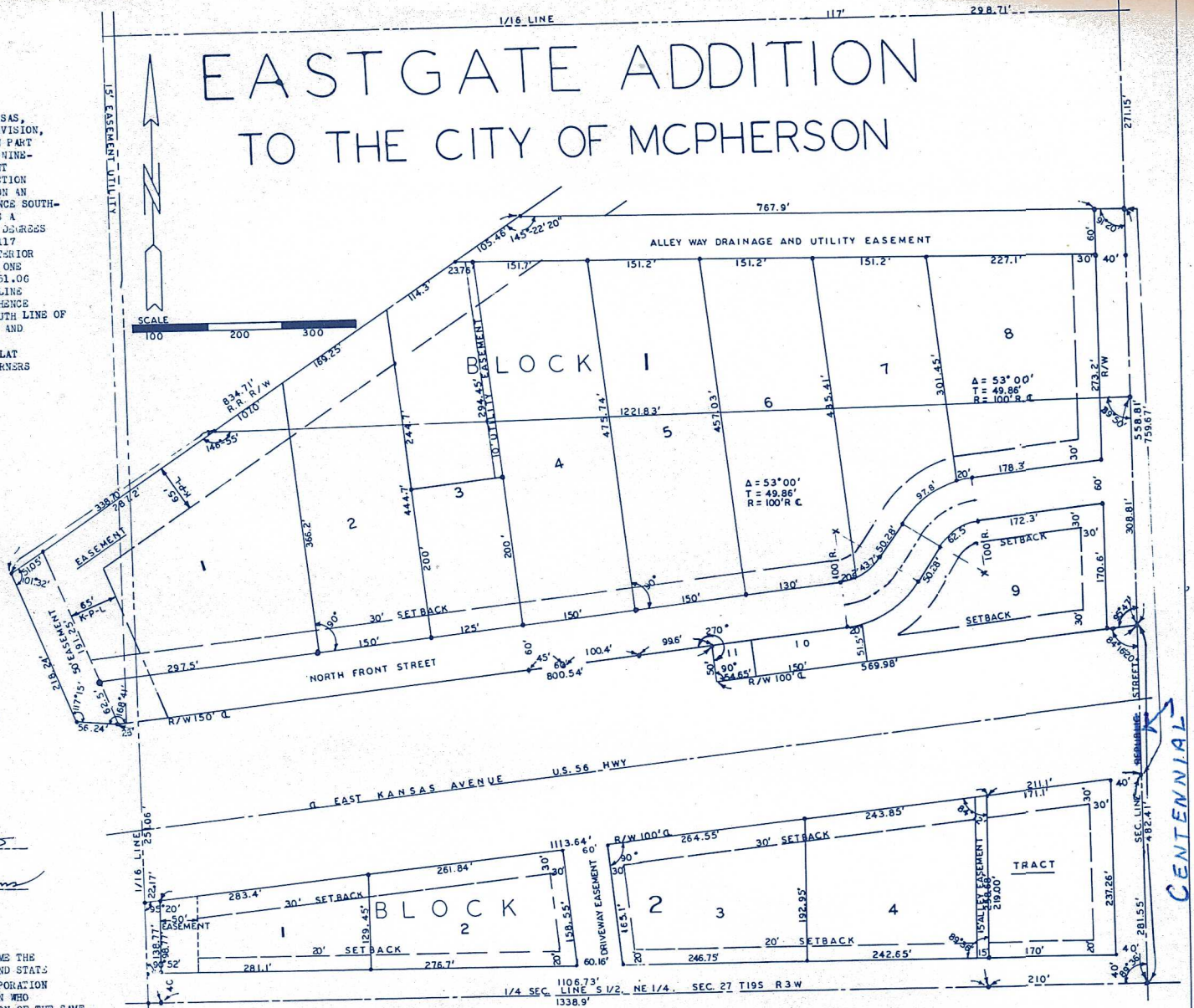
AT WAS SUBMITTED TO ME AND THAT THE SAME IS  
MARCH, 1970.

*F. R. Finkbeiner*  
COUNTY ENGINEER  
MCPHERSON COUNTY, KANSAS

AT WAS SUBMITTED TO ME AND THAT THE SAME IS  
March, 1970.

*[Signature]*  
COUNTY ATTORNEY  
MCPHERSON COUNTY, KANSAS

# EAST GATE ADDITION TO THE CITY OF MCPHERSON



STATE OF KANSAS ) SS  
COUNTY OF MCPHERSON)

BE IT KNOWN, THAT THE ATTACHED PLAT WAS SUBMITTED TO THE CITY PLANNING  
COMMISSION OF THE CITY OF MCPHERSON, KANSAS, AND WAS BY IT APPROVED ON  
THIS 10th DAY OF March, 1970.

*Ray A. Lamm*  
CHAIRMAN, PLANNING COMMISSION  
CITY OF MCPHERSON, KANSAS

STATE OF KANSAS ) SS  
COUNTY OF MCPHERSON)

I, LINN PETERSON, THE DULY APPOINTED, QUALIFIED AND NOW CITY CLERK OF THE  
CITY OF MCPHERSON, KANSAS, DO HEREBY CERTIFY THAT THE PLANNING COMMISSION  
OF THE CITY OF MCPHERSON, KANSAS, RECOMMENDED APPROVAL OF THE ACCOMPANYING  
PLAT TO THE BOARD OF COMMISSIONERS OF THE CITY OF MCPHERSON, KANSAS, AND  
THAT SAID BOARD ADOPTED SAID RECOMMENDATION, APPROVED SAID PLAT, AND  
INCORPORATED SAID APPROVAL IN THEIR MINUTES OF THE 23rd DAY OF March,  
1970, ALL OF WHICH IS ON FILE IN MY OFFICE.

IN WITNESS WHEREOF, I HAVE SUBSCRIBED MY NAME AND AFFIXED THE SEAL OF SAID  
CITY THIS 24th DAY OF March, 1970.

(SEAL)  
*Linn Peterson*  
CITY CLERK  
CITY OF MCPHERSON, KANSAS

STATE OF KANSAS ) SS  
COUNTY OF MCPHERSON)

BE IT KNOWN, THAT THE ATTACHED PLAT WAS SUBMITTED TO THE ZONING BOARD OF  
MCPHERSON COUNTY, KANSAS, AND WAS BY IT APPROVED ON THE 11th DAY OF  
March, 1970.

*James R. Spence*  
CHAIRMAN, ZONING BOARD  
COUNTY OF MCPHERSON, KANSAS

STATE OF KANSAS ) SS  
COUNTY OF MCPHERSON)

I, MILBERT JOHNSON, THE DULY ELECTED, QUALIFIED AND NOW ACTING COUNTY CLERK OF  
MCPHERSON COUNTY, KANSAS, DO HEREBY CERTIFY THAT THE ZONING BOARD OF MCPHERSON  
COUNTY, KANSAS, RECOMMENDED APPROVAL OF THE ACCOMPANYING PLAT TO THE BOARD OF  
COMMISSIONERS OF MCPHERSON COUNTY, KANSAS AND THAT SAID BOARD ADOPTED SAID  
RECOMMENDATION, APPROVED SAID PLAT, AND INCORPORATED SAID APPROVAL IN THEIR  
MINUTES ON THE 23rd DAY OF March, 1970, ALL OF WHICH IS ON FILE IN MY  
OFFICE.

IN WITNESS WHEREOF, I HAVE SUBSCRIBED MY NAME AND AFFIXED THE SEAL OF SAID  
COUNTY THIS 24th DAY OF March, 1970.

*Milbert Johnson*  
COUNTY CLERK  
MCPHERSON COUNTY, KANSAS



MICROFILM