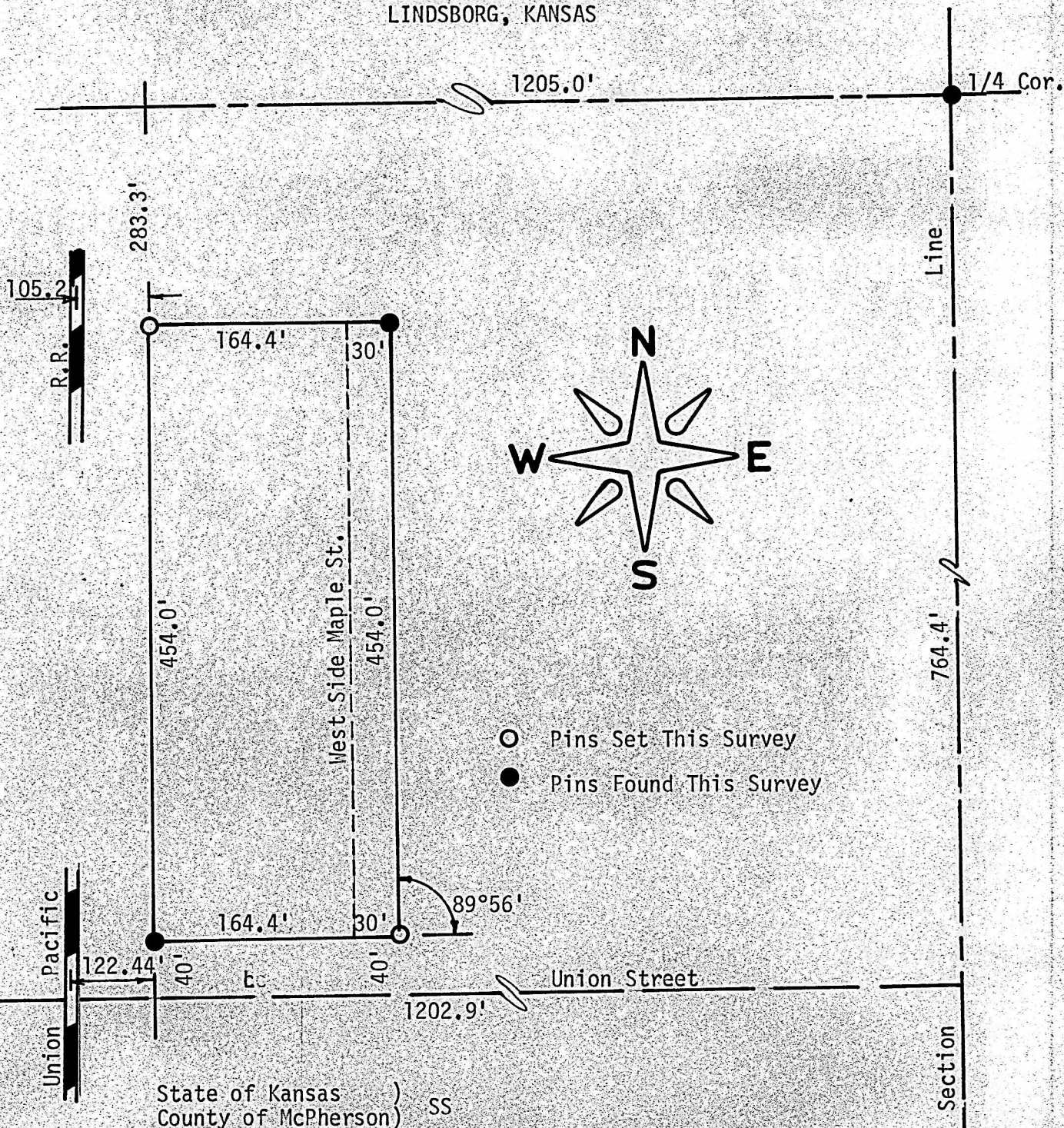


A SURVEY OF LOTS 15 THRU 49
AND THE WEST 30' OF MAPLE STREET
EAST ADDITION TO THE CITY OF
LINDSBORG, KANSAS



I, F. R. Rankin, County Engineer of McPherson County, Kansas, do hereby certify that under my supervision a survey was made of Lots 15 thru 49 and the West 30 feet of Maple Street, East Addition to the City of Lindsborg, Kansas, and the above plat is a true exhibit of said survey as far as it is known to me.

Survey called for by Ed Nichols
Signed on this 17 day of April, 1972

F. R. Rankin
F. R. Rankin, P. E.
County Engineer
McPherson County, Kansas

