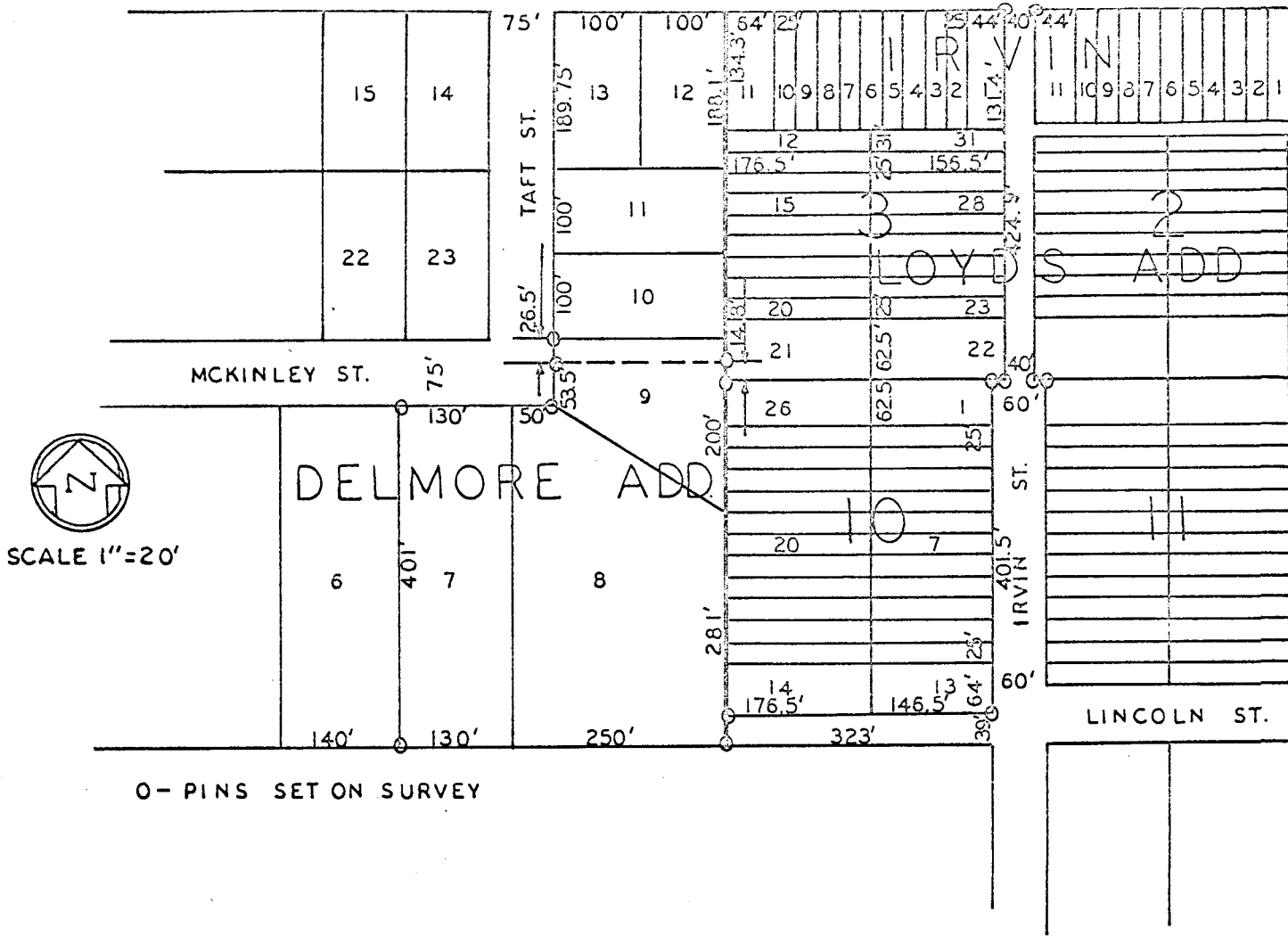


KANSAS AVE.



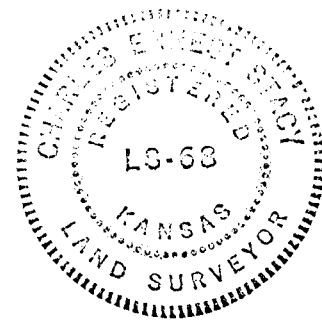
STATE OF KANSAS)
CITY OF McPHERSON) SS

I, CHARLES E. STACY, CITY ENGINEER OF McPHERSON, DO HEREBY CERTIFY THAT I DID CAUSE TO BE DONE ON THE 30th DAY OF APRIL 1970, A SURVEY OF LOTS ONE (1) TO TWENTY-SIX (26) INCLUSIVE, IN BLOCK TEN (10), IRVIN & LLOYDS ADDITION TO McPHERSON, TOGETHER WITH THE SOUTH HALF OF WASHINGTON STREET ABUTTING SAID BLOCK 10 AND REVESTING THERETO BY REASON OF VACATION; AND LOTS SEVEN (7), EIGHT (8) AND NINE (9) EXCEPT THE NORTH 26.5 FEET OF LOT DELMORE ADDITION TO McPHERSON, McPHERSON COUNTY, KANSAS; AND THAT THE AB ACCOMPANY PLAT IS A TRUE EXHIBIT OF SAID SURVEY.

SURVEY REQUESTED BY
PIONEER SAVINGS & LOAN ASSN.
120 W. KANSAS

Charles E. Stacy
CHARLES E. STACY P.E.

MAY 1, 1970



MICROFILM