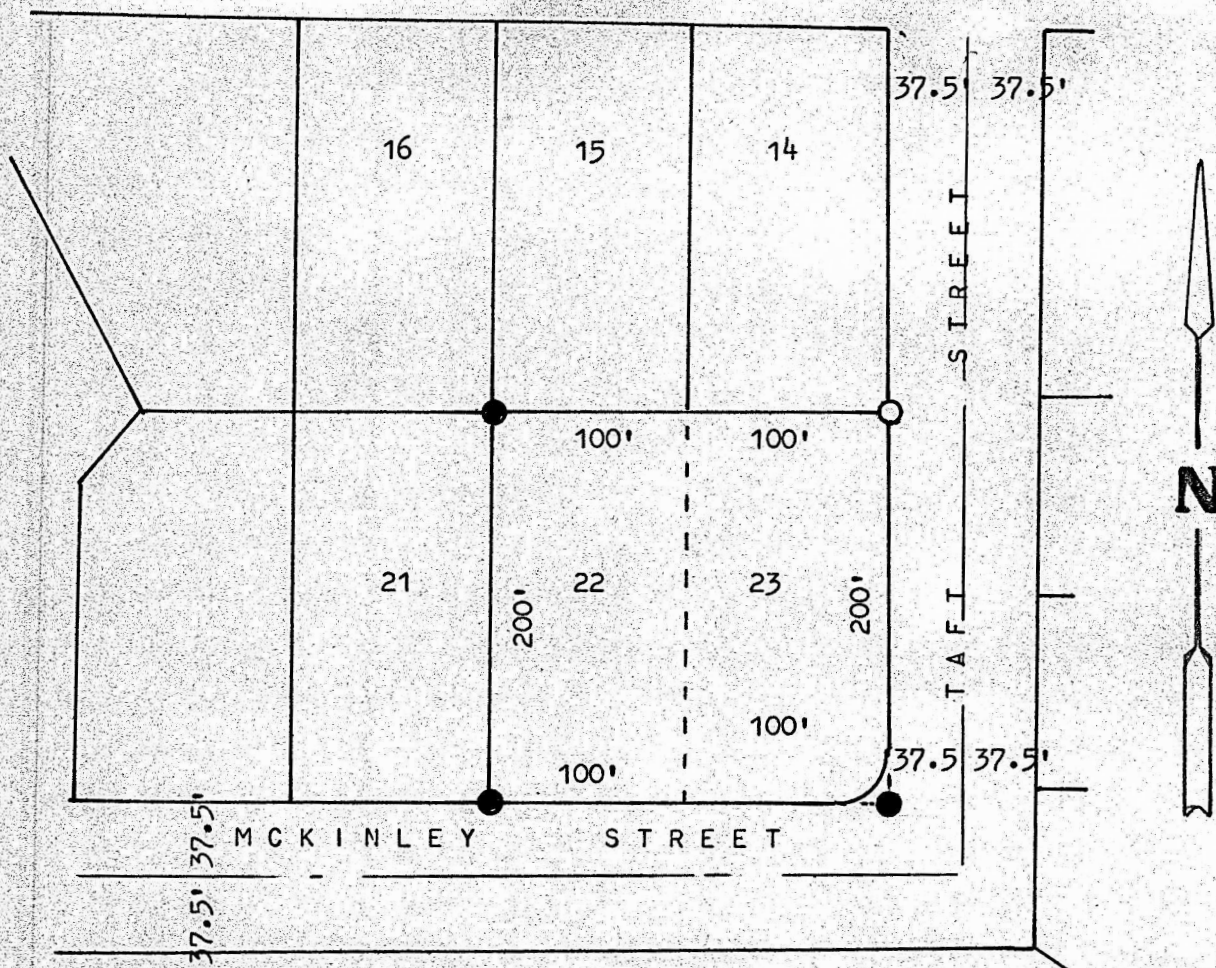


A SURVEY OF LOTS 22 & 23 DELMORE ADDITION  
MCPHERSON, KANSAS



- PINS FOUND THIS SURVEY
- PINS SET THIS SURVEY

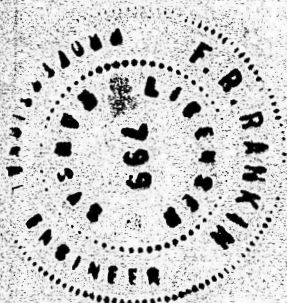
STATE OF KANSAS )  
COUNTY OF MCPHERSON ) SS

I, FRANCIS RANKIN, PROFESSIONAL ENGINEER OF THE STATE OF KANSAS  
DO HEREBY CERTIFY THAT UNDER MY SUPERVISION A SURVEY WAS MADE  
OF LOTS 22 AND 23 DELMORE ADDITION TO THE CITY OF MCPHERSON,  
KANSAS, AND THAT THE ABOVE PLAT IS A TRUE EXHIBIT OF SAID  
SURVEY AS FAR AS IT IS KNOWN TO ME.

SURVEY CALLED FOR BY GLEN JOHNSON ( VFW )

SIGNED THIS 6 , DAY OF MARCH, 1970

*Francis Rankin*  
FRANCIS RANKIN  
PROFESSIONAL ENGINEER  
MCPHERSON, KANSAS



MICROFILM