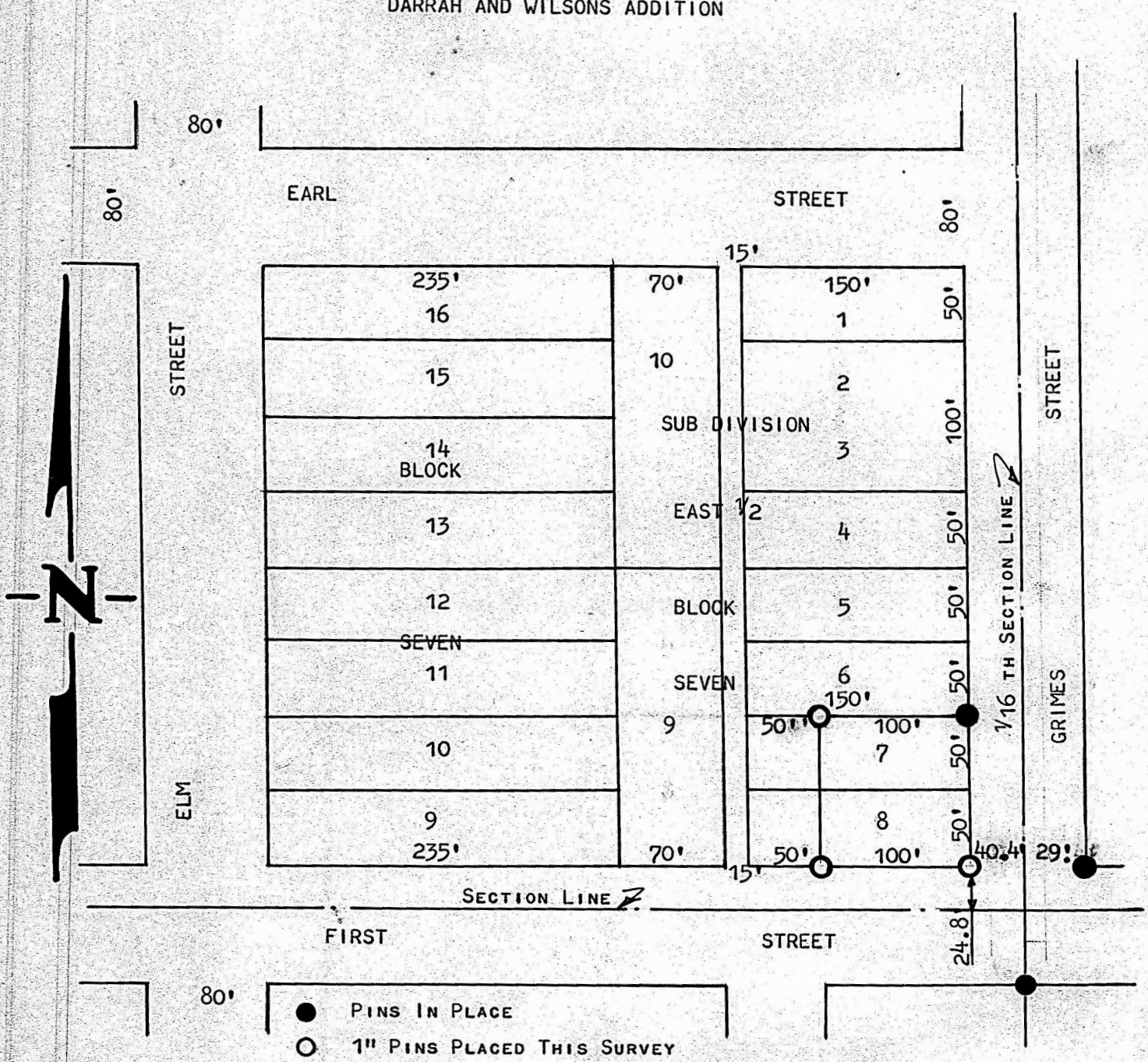


A SURVEY OF THE EAST 100'
OF LOTS 7 & 8, SUB DIVISION
EAST HALF BLOCK SEVEN
DARRAH AND WILSON'S ADDITION



STATE OF KANSAS) SS
COUNTY OF McPHERSON)

I, FRANCIS D. WAGNER, REGISTERED PROFESSIONAL ENGINEER, DO HEREBY CERTIFY THAT I DID ON THE 19TH DAY OF MAY, 1959, A SURVEY OF THE EAST 100' FEET OF LOTS 7 & 8 SUB DIVISION OF THE EAST HALF BLOCK SEVEN DARRAH AND WILSON'S ADDITION TO THE CITY OF McPHERSON, KANSAS, AND THAT THE ACCOMPANYING PLAT IS A TRUE EXHIBIT OF SAID SURVEY.

Francis D. Wagner

FRANCIS D. WAGNER
REGISTERED PROFESSIONAL
ENGINEER
McPHERSON, KANSAS



MAY 20, 1959

MICROFILM