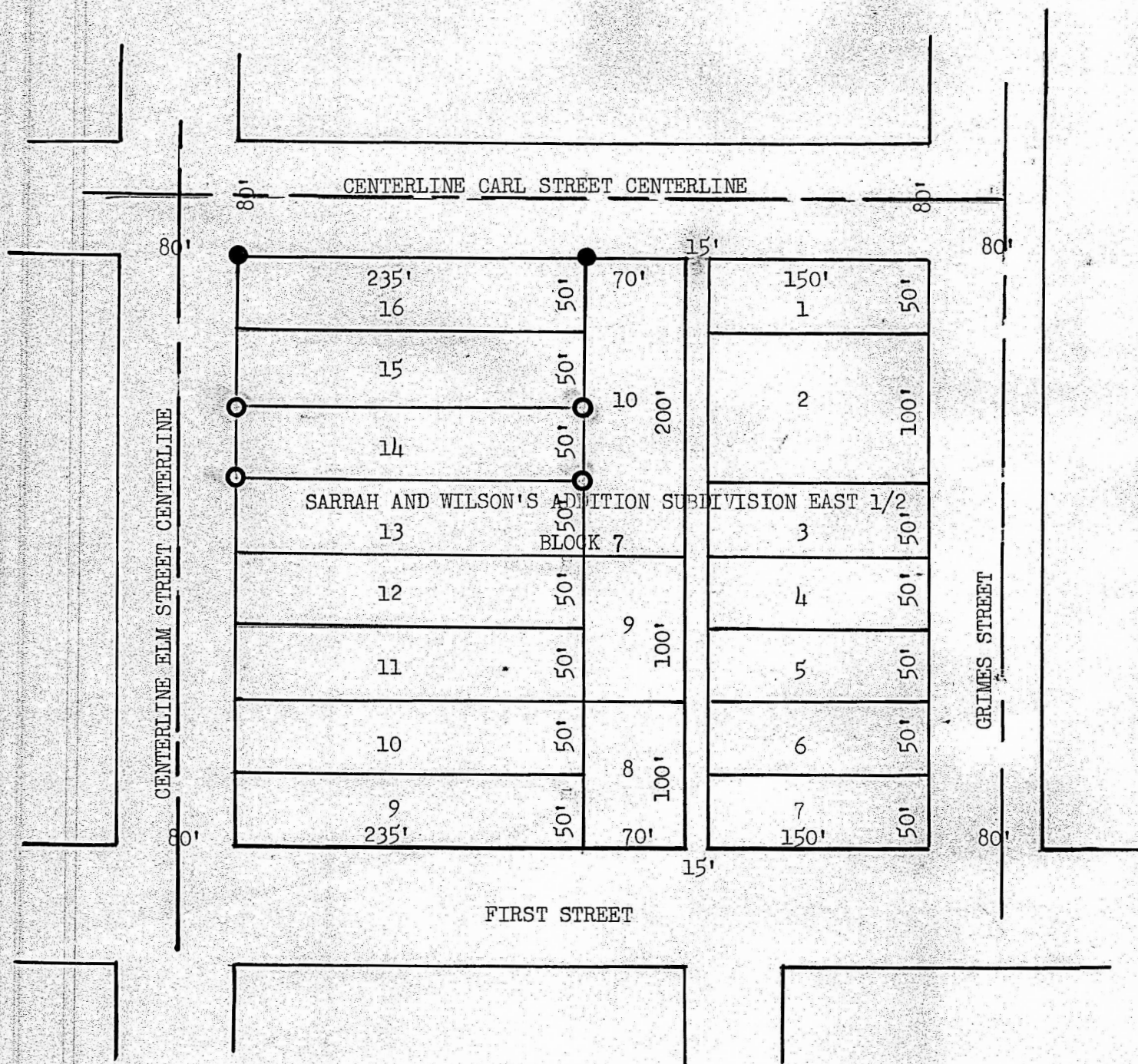


(Copy)



State of Kansas, County of McPherson, ss.

I, Francis D. Wagner, County Engineer of McPherson County, Kansas, do hereby certify that I did on the 10th day of April, 1950, survey and stake Lot 14, Block 7, Barrah and Wilson's Addition to the City of McPherson, and that the accompanying plat is a true exhibit of said survey.

Francis D. Wagner
Francis D. Wagner
County Engineer

MICROFILM

