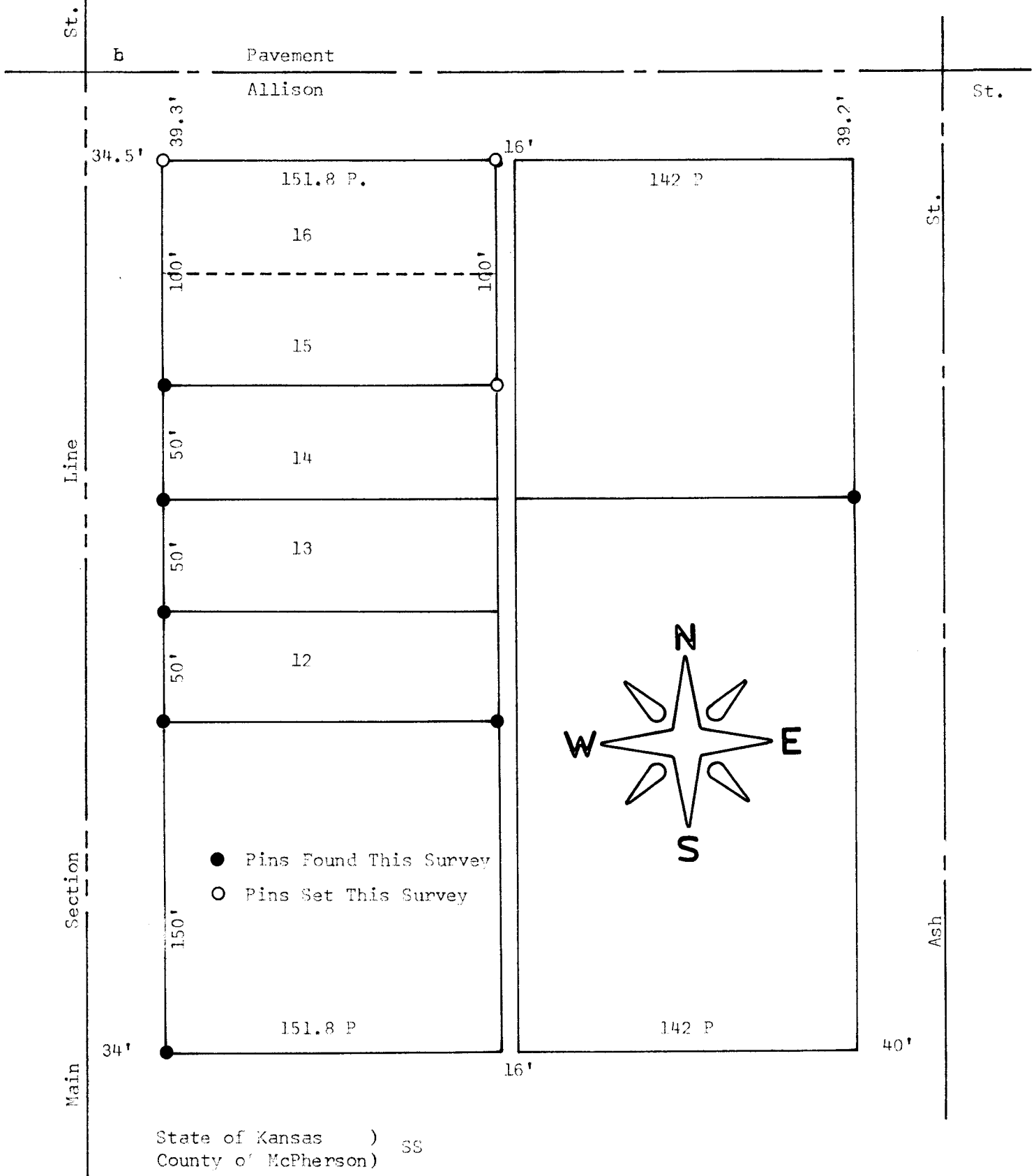


SURVEY LOTS 15 & 16
BLOCK 4, DARRAH & WILSON'S ADD.
MC PHERSON, KANSAS



I, F. R. Rankin, County Engineer of McPherson, Kansas, do hereby certify that under my supervision a survey was made of Lots 15 and 16, Block 4, Darrah and Wilson's Addition to the City of McPherson, Kansas and the above plat is a true exhibit of said survey as far as it is known to me.

Survey called for by Mrs. Steele

Signed this 23 day May, 1960

F. R. Rankin
F. R. Rankin
County Engineer
McPherson, Kansas

