

Curlee's Add
Harley Bessinger
Edward Smith

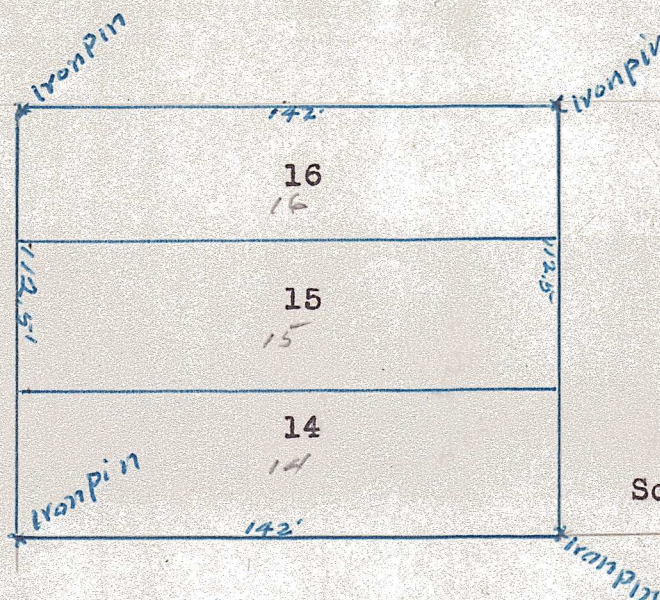
H. A. ROWLAND • Kansas Licensed Civil Engineer

Member

National Society Professional Engineers
Kansas Society Professional Engineers
Kansas Engineering Society

PHONE 796 X

McPHERSON, KANSAS



Scale 1 in. to 50 feet.

STATE OF KANSAS,
McPherson County, ss; ,

The above plat is in accordance with a survey and consists of
Lots 14-15 & 16 in Curlee's Addition to McPherson, Kansas.
Dated at McPherson, Kansas, Sep. 25th 1950.

Signed:- H. A. Rowland

Registered Professional Engineer.



37.5
3
112.5