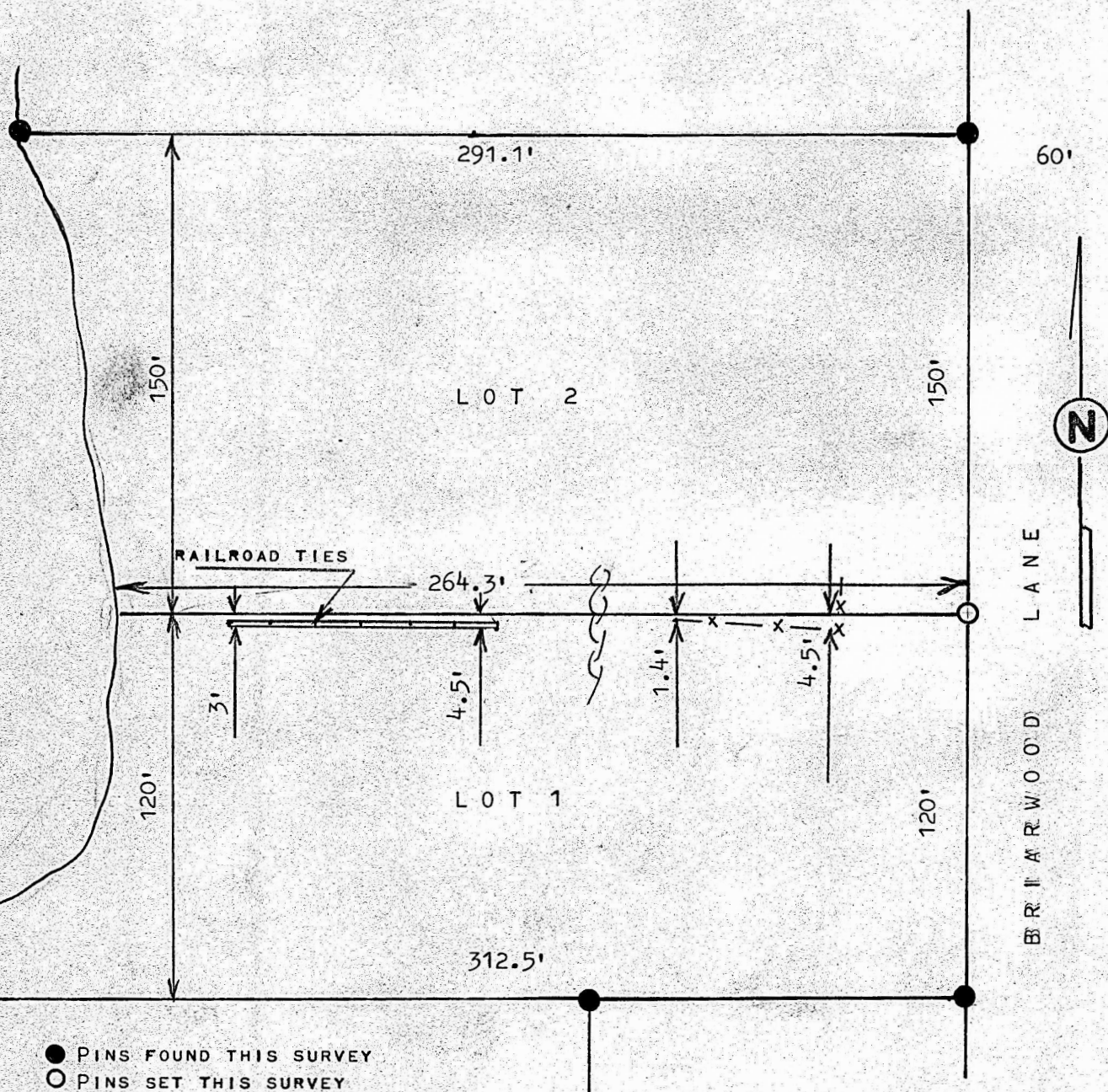


A SURVEY OF LOT 2, BLOCK 2
COUNTRYSIDE LAKE ADDITION
MCPHERSON, KANSAS



STATE OF KANSAS)
COUNTY OF MCPHERSON) SS

I, MELVIN FERGUSON, PROFESSIONAL ENGINEER OF THE STATE OF KANSAS DO HEREBY CERTIFY THAT UNDER MY SUPERVISION A SURVEY WAS MADE OF LOT 2, BLOCK 2, COUNTRYSIDE LAKE ADDITION, TO THE CITY OF MCPHERSON, KANSAS AND THAT THE ACCOMPANYING PLAT IS A TRUE EXHIBIT OF SAID SURVEY AS FAR AS IT IS KNOWN TO ME.

SURVEY CALLED FOR BY BOB PERRIN

SIGNED THIS 12th DAY OF JUNE, 1979

Melvin Ferguson
MELVIN FERGUSON
PROFESSIONAL ENGINEER
MCPHERSON, KANSAS



MICROFILM