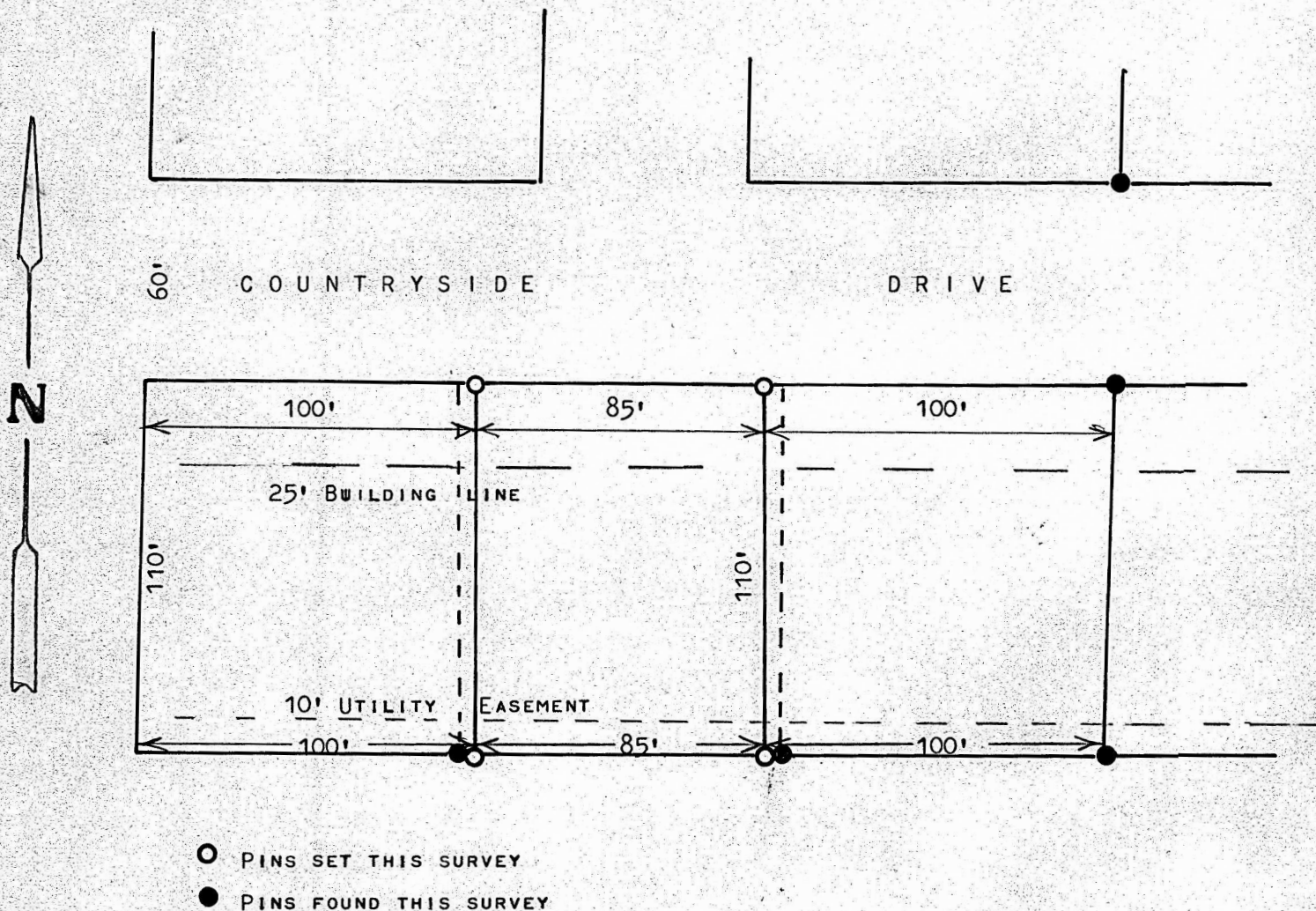


A SURVEY OF LOT 24 EXCEPT THE EAST 5 FEET AND THE WEST 5 FEET, BLOCK 2, COUNTRYSIDE ADDITION, MCPHERSON, KANSAS



STATE OF KANSAS)
COUNTY OF MCPHERSON) SS

I, MELVIN FERGUSON, PROFESSIONAL ENGINEER OF THE STATE OF KANSAS DO HEREBY CERTIFY THAT UNDER MY SUPERVISION A SURVEY WAS MADE OF LOT 24 EXCEPT THE EAST 5 FEET AND EXCEPT THE WEST 5 FEET, COUNTRYSIDE ADD. BLOCK 2, TO THE CITY OF MCPHERSON, KANSAS, AND THAT THE ABOVE PLAT IS A TRUE EXHIBIT OF SAID SURVEY AS FAR AS IT IS KNOWN TO ME.

SURVEY CALLED FOR BY FRED LANDIS

SIGNED THIS 7th DAY OF JULY, 1975

MELVIN FERGUSON
PROFESSIONAL ENGINEER
MCPHERSON, KANSAS

MELVIN FERGUSON
LICENSED
6772
KANSAS
PROFESSIONAL ENGINEER