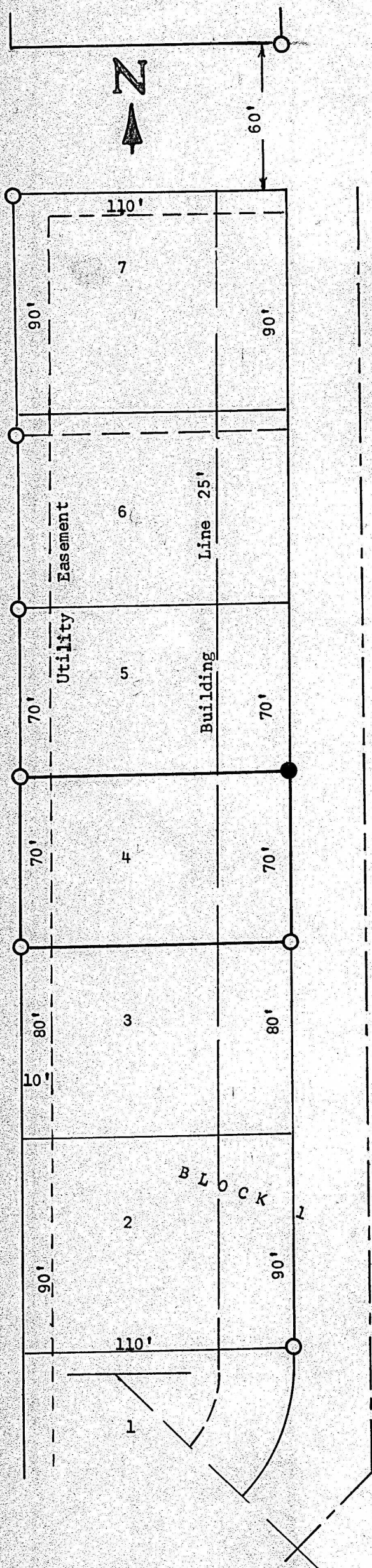


A SURVEY OF LOT 4, BLOCK 1,
COUNTRYSIDE ADDITION
MC PHERSON, KANSAS



- Pins Set this Survey
- Pins Found the Survey

State of Kansas)
County of McPherson) SS

I, Melvin Ferguson, County Engineer, of McPherson County, Kansas, do hereby certify that under my supervision a survey was made of Lot 4, Block 1, Countryside Addition, McPherson, Kansas and that the accompanying plat is a true exhibit of said survey as far as it is known to me.

Survey called for by Harris Development

Signed this 6th day of May, 1974

Melvin Ferguson
Melvin Ferguson, P. E.
County Engineer
McPherson, Kansas



MICROFILM